

FARMINGTON

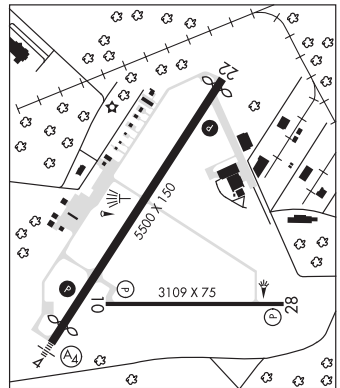
CHORMAN (D74) 2 SW UTC-5(-4DT) N38°50.97' W75°36.77' WASHINGTON
L-34F, 36J, A
 66 B NOTAM FILE MIV
RWY 16-34: H3588X37 (ASPH) LIRL
RWY 16: REIL.
RWY 34: REIL. Thld dsplcd 438'. Pole.
SERVICE: S4 **LGT** For rotating bcn call 302-349-5055 or 645-9225. For LIRL Rwy 16-34 and REIL Rwy 16 and Rwy 34 call 302-349-5055 or 645-9225.
AIRPORT REMARKS: Attended Mon-Fri 1330Z±-dusk. AG spraying activity on and invof arpt. Loading pad adjacent to east side Rwy 34.
AIRPORT MANAGER: 302-349-5055
COMMUNICATIONS: CTAF 122.9
CLEARANCE DELIVERY PHONE: For CD ctc Washington ARTCC at 703-771-3587.
RADIO AIDS TO NAVIGATION: NOTAM FILE MIV.
WATERLOO (L) VOR/DME 112.6 ATR Chan 73 N38°48.59' W75°12.68' 286° 19.0 NM to fld. 5/9W.
 DME unusable:
 179°-293° byd 30 NM blo 2,000'

FELTON

ALBANNA AVIATION (ØN6) 2 NE UTC-5(-4DT) N39°00.77' W75°32.04' WASHINGTON
 50 NOTAM FILE MIV
RWY 15-33: 2048X40 (TURF)
RWY 15: Bldg.
RWY 33: Trees.
SERVICE: S4
AIRPORT REMARKS: Attended Mon-Fri 1300-2200Z±.
AIRPORT MANAGER: 410-535-2045
COMMUNICATIONS: CTAF/UNICOM 123.0
CLEARANCE DELIVERY PHONE: For CD ctc Washington ARTCC at 703-771-3587.

GEORGETOWN

DELAWARE COASTAL (GED)(KGED) 2 SE UTC-5(-4DT) N38°41.26' W75°21.56' WASHINGTON
H-10I, 12I, L-34F, 36J, A
IAF
 53 B NOTAM FILE GED
RWY 04-22: H5500X150 (ASPH-GRVD) S-50, D-175
 PCN 43 F/A/X/T MIRL
RWY 04: MALS. REIL. PAPI(P4L)—GA 3.0° TCH 45'. Thld dsplcd 370'.
 Trees.
RWY 22: REIL. PAPI(P4L)—GA 3.0° TCH 45'. Thld dsplcd 169'.
RWY 10-28: H3109X75 (ASPH) S-50, D-91 PCN 36 F/A/X/T MIRL
RWY 10: REIL. PAPI(P2L)—GA 3.5° TCH 46'.
RWY 28: REIL. PAPI(P2L)—GA 3.0° TCH 40'.
SERVICE: S4 **FUEL** 100LL, JET A **LGT** ACTVT REIL Rwy 04, 22, 10, 28; PAPI Rwy 04 and 22; MIRL Rwy 04-22 and 10-28—CTAF.
AIRPORT REMARKS: Attended 1300-2300Z±. Arpt unattended Thanksgiving Day and Christmas Day. Birds, deer, and other wildlife invof rws. FBO hrs 1300-2100Z±. For svc/fuel aft hrs call 302-855-2355. PAEW within safety area of rws and twys. U.S. Customs 72 hrs notice required ctc (302) 855-2355.
AIRPORT MANAGER: 302-855-7774
WEATHER DATA SOURCES: ASOS 118.375 (302) 855-1052.
COMMUNICATIONS: CTAF/UNICOM 123.0
WATERLOO RCO 122.1R 112.6T (MILLVILLE RADIO)
 Ⓡ **DOVER APP/DEP CON** 132.425
CLEARANCE DELIVERY PHONE: For CD if Dover Apch una via GCO 125.55, ctc Washington ARTCC at 703-771-3587.
RADIO AIDS TO NAVIGATION: NOTAM FILE MIV.
WATERLOO (L) VOR/DME 112.6 ATR Chan 73 N38°48.59' W75°12.68' 233° 10.1 NM to fld. 5/9W.
 DME unusable:
 179°-293° byd 30 NM blo 2,000'



HADIN N39°34.88' W75°36.84' NOTAM FILE ILG. WASHINGTON
L-34G
NDB (LOMW) 248 IL 013° 5.9 NM to New Castle. 21/10W.

JENKINS (See WYOMING on page 49)