

**TULLAHOMA RGNL/WM NORTHERN FLD** (THA)(KTHA) 2 NW UTC-6(-5DT) N35°22.80'

ATLANTA  
H-6K, 9A, L-16J  
IAF

W86°14.78'

1084 B NOTAM FILE BNA

**RWY 06-24:** H5501X100 (ASPH-CONC) S-49, D-60 PCN 29 F/C/X/T MIRL

**RWY 06:** ODALS. REIL. PAPI(P2L)—GA 3.0° TCH 41'. Tree.

**RWY 24:** REIL. PAPI(P2L)—GA 3.0° TCH 33'. Thld dsplcd 500'. Tree.

**RWY 18-36:** H5002X100 (ASPH-CONC) S-37 MIRL

**RWY 18:** REIL. PAPI(P2L)—GA 2.95° TCH 34'. Tree.

**RWY 36:** REIL. PAPI(P2L)—GA 3.0° TCH 42'. Thld dsplcd 800'. Tree.

**RWY 09-27:** 2693X100 (TURF)

**RWY 09:** Tree. Rgt tfc.

**RWY 27:** Tree.

**RWY N-S:** 2100X100 (TURF)

**RWY N:** Tree.

**RWY S:** Tree.

**SERVICE:** S4 FUEL 100, JET A LGT ACTVT ODALS Rwy 06; PAPI Rwy 18 and 36; MIRL Rwy 18-36—CTAF. MIRL Rwy 06-24 preset to low intst; incr intst—CTAF. Rwy 36 PAPI unusbl byd 7 degs left and right of cntrln.

**AIRPORT REMARKS:** Attended 1400-0000Z†. Geese and deer on and invof arpt. Glider act invof arpt. Rwy 09-27 field cond soft sfc when wet. Rwy 18-36 markings faded and peeling.

**AIRPORT MANAGER:** 931-455-3884

**WEATHER DATA SOURCES:** AWOS-3 128.325 (931) 454-2052.

**COMMUNICATIONS:** CTAF/UNICOM 123.0

MEMPHIS CENTER APP/DEP CON 128.15

**CLEARANCE DELIVERY PHONE:** For CD ctc Memphis ARTCC at 901-368-8453/8449.

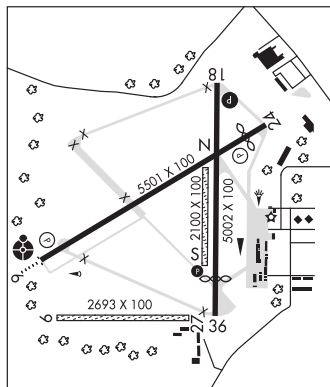
**RADIO AIDS TO NAVIGATION:** NOTAM FILE BNA.

SHELBYVILLE (L) VORW/DME 113.55 SYI Chan 82(Y) N35°33.72' W86°26.35' 140° 14.4 NM to fld. 814/1W.

DME unusable:

021°-045° byd 30 NM blo 4,500'

SDF 110.9 I-THA Rwy 18.



**UNION CITY**

**EVERETT-STEWART RGNL** (UCY)(KUCY) 4 SE UTC-6(-5DT) N36°22.78' W88°59.14'

ST LOUIS  
H-6I, L-16H  
IAF

346 B NOTAM FILE MKL

**RWY 01-19:** H6503X100 (ASPH) S-45, D-60 PCN 3 F/D/X/T MIRL 0.6% up S

**RWY 01:** ODALS. REIL. PAPI(P4L)—GA 3.0° TCH 42'.

**RWY 19:** REIL. PAPI(P4L)—GA 3.0° TCH 29'. P-line.

**SERVICE:** S4 FUEL 100LL, JET A+ OX 1, 2, 3, 4 LGT ACTVT ODALS Rwy 01—CTAF. PAPI Rwy 01 and Rwy 19 H24.

**AIRPORT REMARKS:** Attended Apr-Oct Mon-Sat 1300-0000Z†, Sun 1830-2300Z†, Nov-Mar Mon-Sat 1330-2300Z†, Sun 1830-2300Z†. Aerobatic activity invof arpt. If sfc winds favor Rwy 01, rgt tfc for that rwy in effect when aerobatic area is active.

**AIRPORT MANAGER:** 731-885-1221

**WEATHER DATA SOURCES:** AWOS-3 135.325 (731) 885-9161.

**COMMUNICATIONS:** CTAF/UNICOM 122.7

MEMPHIS CENTER APP/DEP CON 133.65

**CLEARANCE DELIVERY PHONE:** For CD ctc Memphis ARTCC at 901-368-8453/8449.

**RADIO AIDS TO NAVIGATION:** NOTAM FILE DYR.

DYERSBURG (L) VORTACW 116.8 DYR Chan 115 N36°01.11'

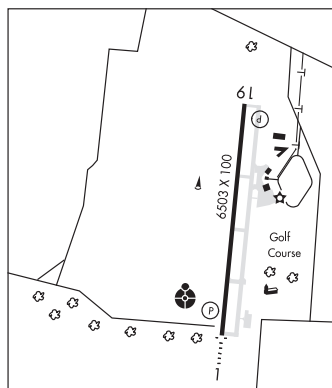
W89°19.06' 034° 27.0 NM to fld. 389/3E.

VOR UNUSABL:

080°-104°

OBION NDB (MHW/LOM) 212 UC N36°17.86' W88°59.69' 005° 4.9 NM to fld. 310/OE. NOTAM FILE MKL. NDB unmonitored.

ILS 109.7 I-UCY Rwy 01. Class IE. LOM OBION NDB. LOC Monitored 1400-2300Z† at fbo.



**UPPER CUMBERLAND RGNL** (See SPARTA on page 426)