

13122

CLOUD-FOUR ALPHA DEPARTURE (CLOUA4•CLOUD)

HOLLOMAN AFB (KHMN)

ALAMOGORDO, NEW MEXICO

ATIS ★ 273.5
 CLNC DEL
 126.7 289.4
 GND CON
 127.05 275.8
 HOLLOMAN TOWER ★
 119.3 255.9
 HOLLOMAN DEP CON
 128.1 284.0
 ALBUQUERQUE CENTER
 132.65 257.6

SHL-7 [USAF]


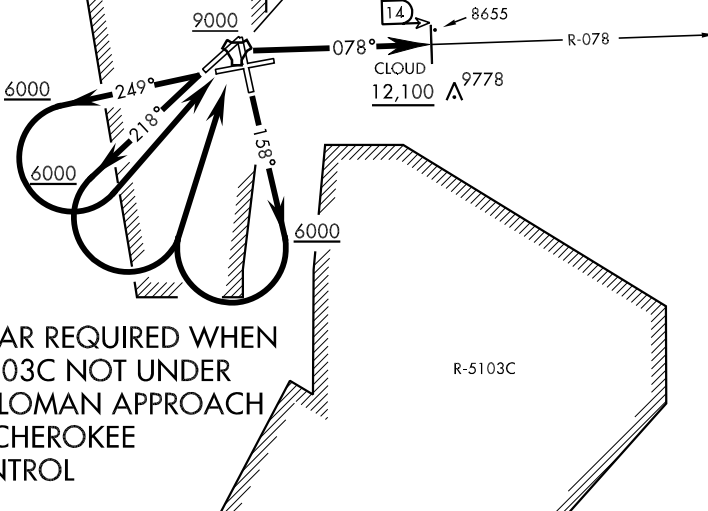
| Rwy | Knots | 60 | 120 | 180 | 240 | 300 | 360 |
|-------|----------|-----|-----|------|------|------|------|
| 16/25 | V/V(fpm) | 450 | 900 | 1350 | 1800 | 2250 | 2270 |
| 22 | V/V(fpm) | 440 | 880 | 1320 | 1760 | 2200 | 2640 |

Minimum climb to 12,100

BEAK B MOA

BEAK C MOA

HOLLOMAN
 Chan 92 HMN

**RADAR REQUIRED WHEN
 R-5103C NOT UNDER
 HOLLOMAN APPROACH
 OR CHEROKEE
 CONTROL**

DEPARTURE ROUTE DESCRIPTION

TAKE-OFF RWY 16: Climb on track 158°. When leaving 6000 turn right direct HMN TACAN, then proceed via HMN R-078 to CLOUD (HMN R-078/14), then via assigned routing. Cross HMN at or above 9000. Cross CLOUD at or above 12,100.

TAKE-OFF RWY 22: Climb on track 218°. When leaving 6000 turn left direct HMN TACAN, then proceed via HMN R-078 to CLOUD (HMN R-078/14), then via assigned routing. Cross HMN at or above 9000. Cross CLOUD at or above 12,100.

TAKE-OFF RWY 25: Climb on track 249°. When leaving 6000 turn left direct HMN TACAN, then proceed via HMN R-078 to CLOUD (HMN R-078/14), then via assigned routing. Cross HMN at or above 9000. Cross CLOUD at or above 12,100.

CLOUD-FOUR ALPHA DEPARTURE (CLOUA4•CLOUD)

ALAMOGORDO, NEW MEXICO

HOLLOMAN AFB (KHMN)

SW-1, 07 OCT 2021 to 04 NOV 2021

SW-1, 07 OCT 2021 to 04 NOV 2021