

LOC I-HMN <b>111.7</b>	APCH CRS <b>218°</b>	Rwy Idg <b>10,578</b> TDZE <b>4083</b> Arprt Elev <b>4093</b>
---------------------------	-------------------------	---

AL-7 [USAF]

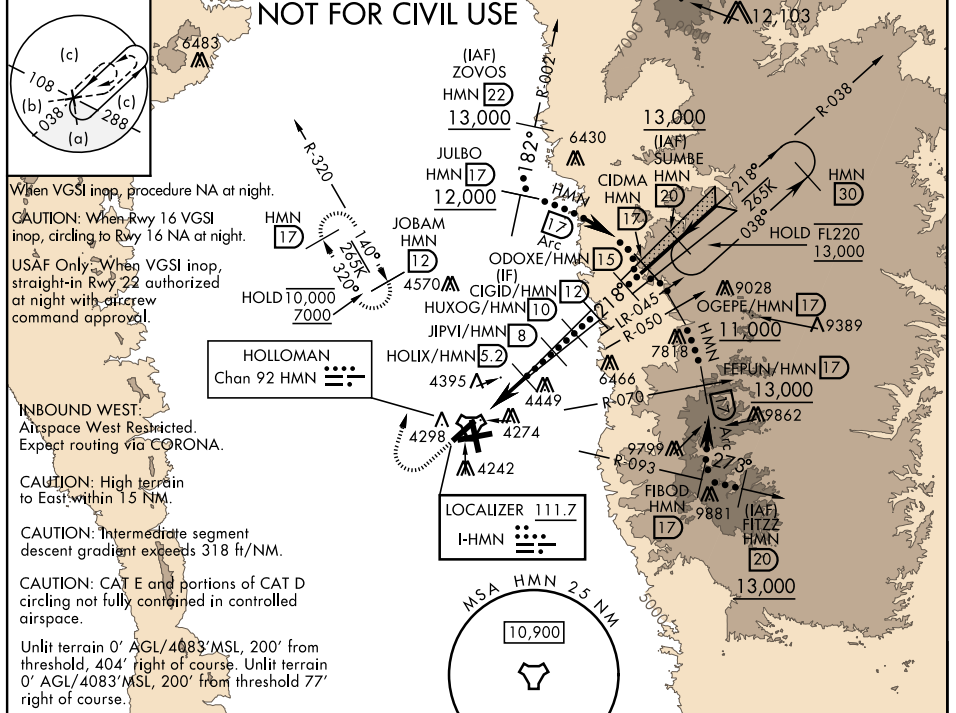
HOLLOMAN AFB (KHMM)

▼ \*When ALS inop, increase vis to 1¾.

ALSF-1

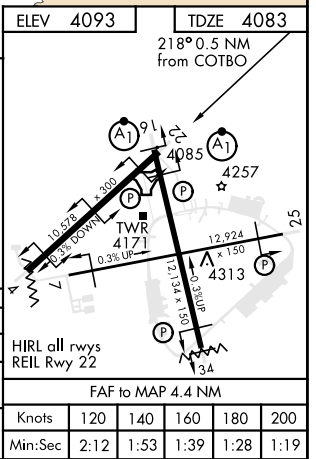
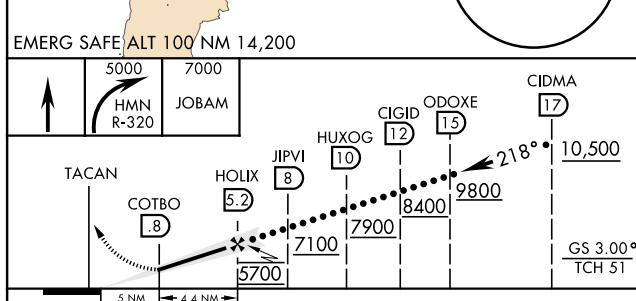
MISSED APPROACH: Climb straight ahead to 7000, passing 5000 turn right and intercept HMN R-320 outbound to JOBAM and hold.

ATIS ★ <b>273.5</b>	ALBUQUERQUE CENTER <b>132.65 257.6</b>	HOLLOMAN APP CON <b>120.6 269.225</b>	TOWER ★ <b>119.3 255.9</b>	GND CON <b>127.05 275.8</b>	CLNC DEL <b>126.7 289.4</b>
------------------------	---	--	-------------------------------	--------------------------------	--------------------------------



SW-1, 07 OCT 2021 to 04 NOV 2021

SW-1, 07 OCT 2021 to 04 NOV 2021



CATEGORY	C	D	E
S-ILS 22	4333-1	250 (300-1)	
S-LOC 22*	4680-1¼	597 (600-1¼)	
CIRCLING	4740-1¾ 647 (700-1¾)	4760-2 667 (700-2)	4760-2¼ 667 (700-2¼)