

HI-ILS or LOC Z RWY 16

LOC I-MUK 108.9	APCH CRS 158°	Rwy Ldg 12,134 TDZE 4083 Arpt Elev 4093
---------------------------	-------------------------	--

AL-7 [USAF]

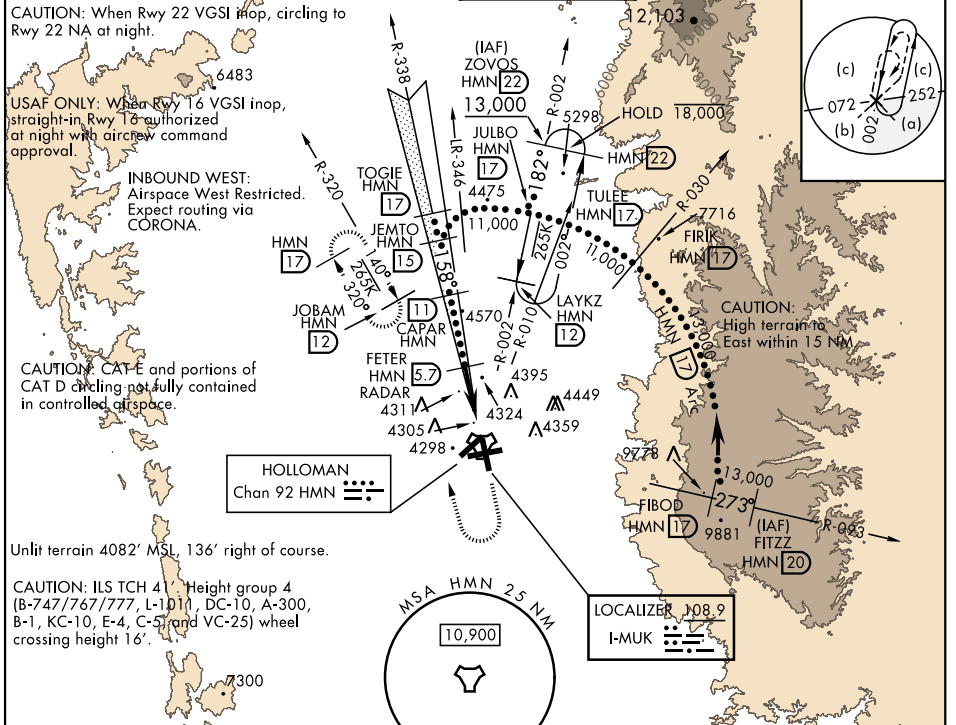
HOLLOMAN AFB (KHMM)

RADAR or DME required.

ALSF-1  MISSED APPROACH: Climb straight ahead to 7000, passing 5000 turn right and intercept HMN R-320 outbound to JOBAM and hold.

▼ * When ALS inop, increase CAT CDE vis to 1 1/2 miles.

ATIS ★ 273.5	ALBUQUERQUE CENTER 132.65 257.6	HOLLOMAN APP CON 120.6 269.225	HOLLOMAN TOWER ★ 119.3 255.9	GND CON 127.05 275.8	CLNC DEL 126.7 289.4
------------------------	---	--	--	--------------------------------	--------------------------------



CAUTION: When Rwy 22 VGSII inop, circling to Rwy 22 NA at night.

USAFA ONLY: When Rwy 16 VGSII inop, straight-in Rwy 16 authorized at night with aircrews command approval.

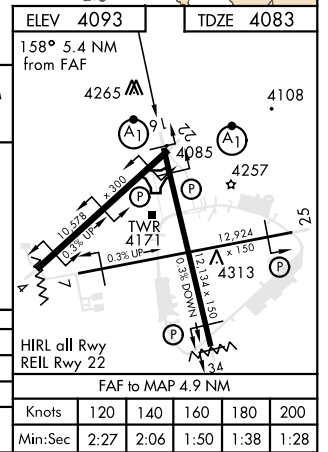
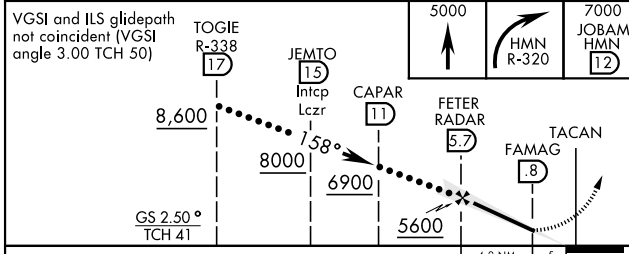
INBOUND WEST: Airspace West Restricted. Expect routing via CORONA.

CAUTION: CAT E and portions of CAT D circling not fully contained in controlled airspace.

Unlit terrain 4082' MSL, 136' right of course.

CAUTION: ILS TCH 41. Height group 4 (B-747/767/777, L-1011, DC-10, A-300, B-1, KC-10, E-4, C-5 and VC-25) wheel crossing height 16'.

EMERG SAFE ALT 100 NM 14,200



CATEGORY	C	D	E			
	4333-1	250 (300-1)				
S-ILS 16	4333-1	250 (300-1)				
S-LOC 16 *	4580-1	497 (500-1)				
CIRCLING	4740-1 1/4 647 (700-1 1/4)	4760-2 667 (700-2)	4760-2 1/4 667 (700-2 1/4)			
HIRL all Rwy REIL Rwy 22	FAF to MAP 4.9 NM					
	Knots	120	140	160	180	200
	Min:Sec	2:27	2:06	1:50	1:38	1:28

HI-ILS or LOC Z RWY 16

SW-1, 07 OCT 2021 to 04 NOV 2021

SW-1, 07 OCT 2021 to 04 NOV 2021