

HI-RNAV (GPS) RWY 22

APCH CRS	Rwy Idg	10,578
218°	TDZE	4083
	Arprt Elev	4093

AL-7 (USAF)

HOLLOMAN AFB (KHMN)

▼ * When ALS inop increase vis to 1 1/4 miles.
 ** When ALS inop increase CAT AB vis to 1 mile; CAT CDE vis to 1 1/4 miles.



MISSED APPROACH: Climb to 5000 then climbing right turn to 7000 direct JOBAM, do not exceed 265 KIAS until turn completion and hold.

ATIS★	ALBUQUERQUE CENTER	APP CON	TOWER★	GND CON	CLNC DEL
273.5	132.65 257.6	120.6 269.225	119.3 255.9	127.05 275.8	126.7 289.4

Average Cold Temperature based on standard -30.00°C ISA deviation.

INBOUND WEST: Airspace West Restricted. Expect routing via CORONA.

For uncompensated Baro-VNAV systems, procedure NA below -23°C (-9°F) or above 54°C (129°F).

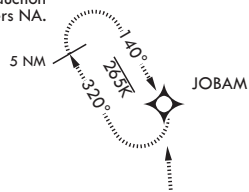
When VGSI inop, procedure NA at night.

Unlit terrain 4083' MSL 200' from threshold, 400' right of course.

Unlit terrain 4083' MSL 200' from threshold, 72' right of course.

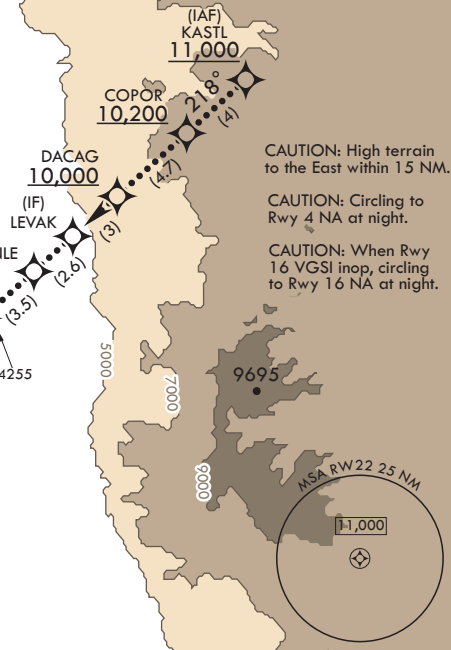
RNP APCH
DME/DME RNP-0.3 NA

Visibility reduction by helicopters NA.



USAF Only: When VGSI inop, straight-in Rwy 22 authorized at night with aircrew command approval.

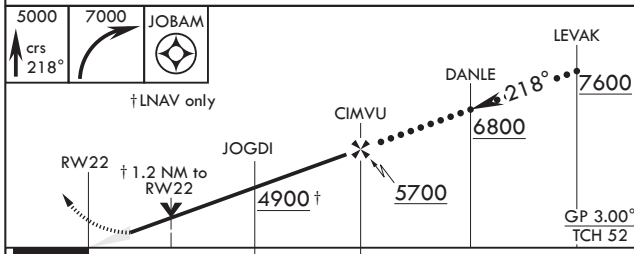
CAUTION: CAT E and portions of CAT D circling not fully contained in controlled airspace.



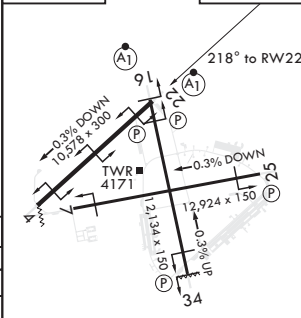
CAUTION: High terrain to the East within 15 NM.
 CAUTION: Circling to Rwy 4 NA at night.
 CAUTION: When Rwy 16 VGSI inop, circling to Rwy 16 NA at night.

NOT FOR CIVIL USE

EMERG SAFE ALT 100 NM 14,200



ELEV 4093	TDZE 4083
-----------	-----------



CATEGORY	A	B	C	D	E
LNAV/VNAV DA*	4448-5/8		365	(400-5/8)	
LNAV MDA**	4520-1/2 437 (500-1/2)		4520-3/4 437 (500-3/4)		
CIRCLING	4620-1 527 (600-1)	4660-1 567 (600-1 1/2)	4720-2 627 (700-2)	4780-2 687 (700-2 1/2)	

REIL Rwy 22
HIRL all Rwys

HI-RNAV (GPS) RWY 22

SW-1, 07 OCT 2021 to 04 NOV 2021

SW-1, 07 OCT 2021 to 04 NOV 2021