

HI-TACAN RWY 16

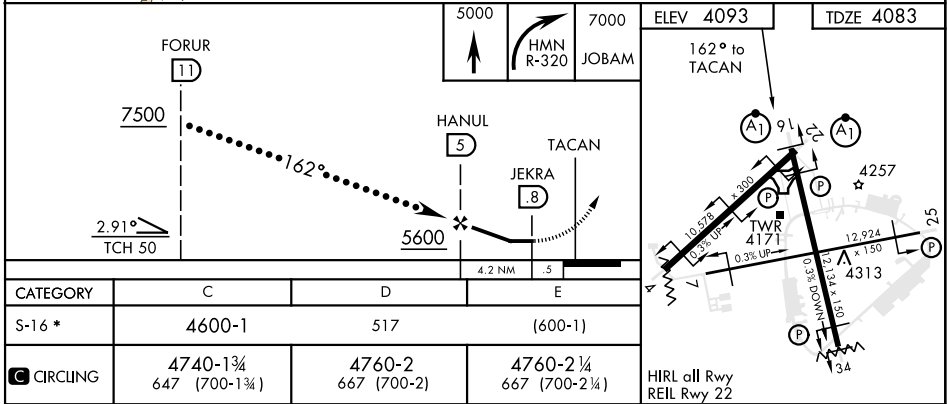
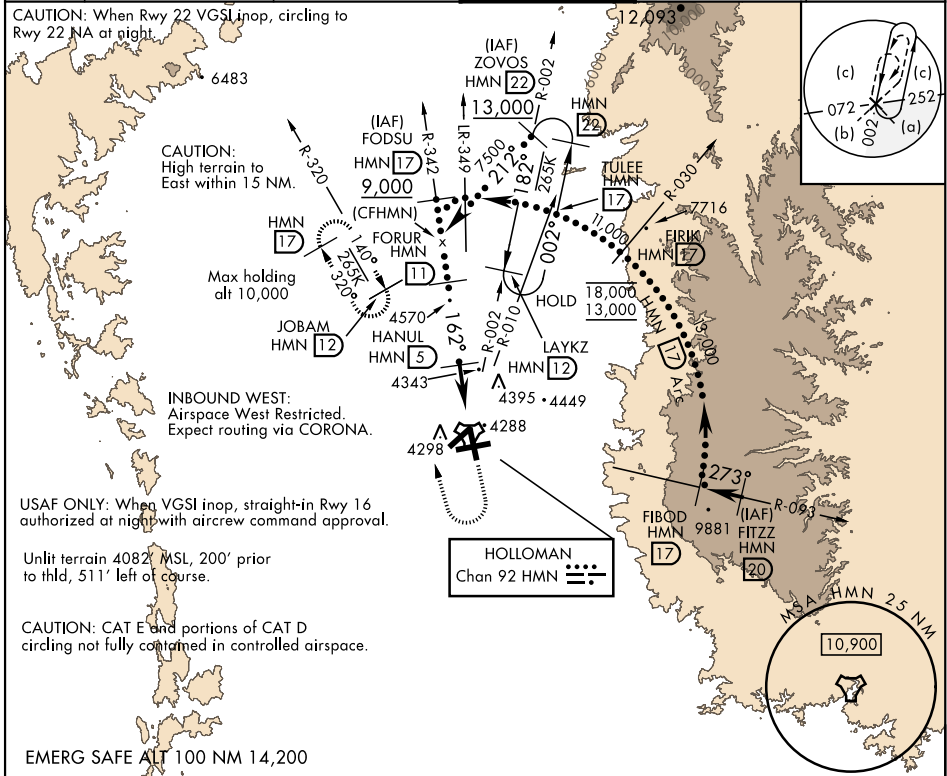
TACAN HMN Chan 92	APCH CRS 162°	Rwy ldg 12,134 TDZE 4083 Arprt Elev 4093	AL-7 [USAF]	HOLLOMAN AFB (KHMN)
-----------------------------	-------------------------	---	-------------	---------------------

⚠ * When ALS inop, increase CAT CDE vis to 1½ miles.
When VGSI inop, procedure NA at night.

ALSF-1 

MISSED APPROACH: Climb straight ahead to 7000, passing 5000 turn right and intercept HMN R-320 outbound to JOBAM and hold.

ATIS * 273.5	ALBUQUERQUE CENTER 132.65 257.6	HOLLOMAN APP CON 120.6 269.225	HOLLOMAN TOWER * 119.3 255.9	GND CON 127.05 275.8	CLNC DEL 126.7 289.4
------------------------	---	--	--	--------------------------------	--------------------------------



HI-TACAN RWY 16

SW-1, 07 OCT 2021 to 04 NOV 2021

SW-1, 07 OCT 2021 to 04 NOV 2021