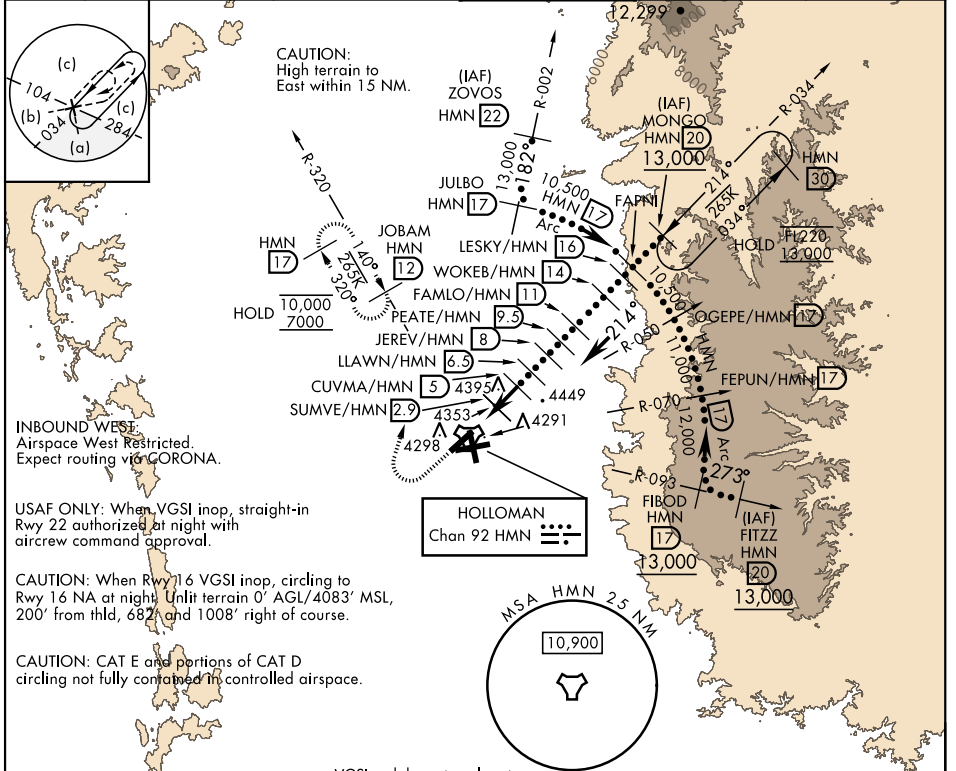


HI-TACAN RWY 22

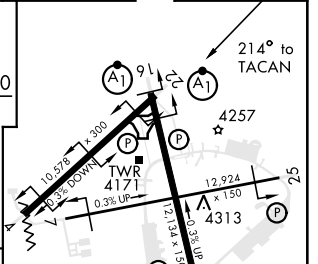
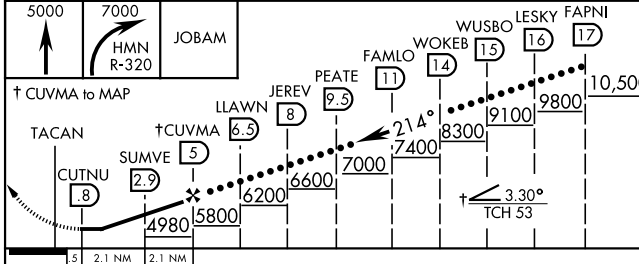
TACAN HMN Chan 92	APCH CRS 214°	Rwy ldg 10,578 TDZE 4083 Arpt Elev 4093	AL-7 [USAF]	HOLLOMAN AFB (KHMN)
-----------------------------	-------------------------	--	-------------	---------------------

V * When ALS inop, increase CAT CDE vis to 1½ miles.
 When VGSI inop, procedure NA at night.

ATIS ★ 273.5	ALBUQUERQUE CENTER 132.65 257.6	HOLLOMAN APP CON 120.6 269.225	HOLLOMAN TOWER ★ 119.3 255.9	GND CON 127.05 275.8	CLNC DEL 126.7 289.4
------------------------	---	--	--	--------------------------------	--------------------------------



ELEV 4093	TDZE 4083
-----------	-----------



CATEGORY	C	D	E
S-22 *	4620-1	537	(600-1)
CIRCLING	4740-1¾ 647 (700-1¾)	4760-2 667 (700-2)	4760-2¼ 667 (700-2¼)

HIRL all Rwy
REIL Rwy 22

HI-TACAN RWY 22

SW-1, 07 OCT 2021 to 04 NOV 2021

SW-1, 07 OCT 2021 to 04 NOV 2021