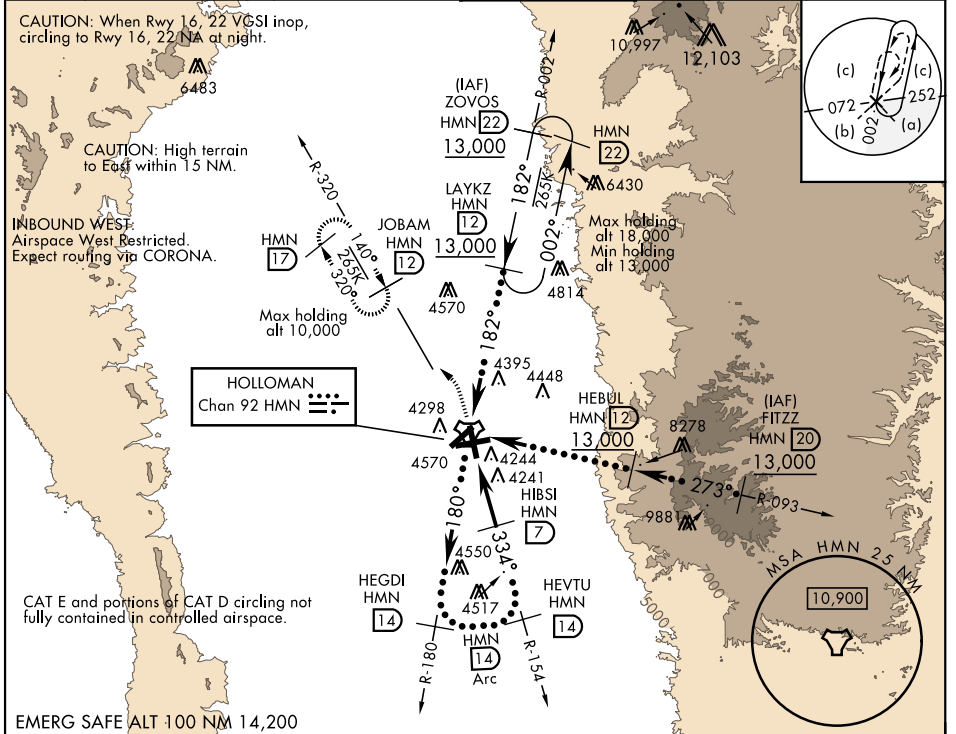


HI-TACAN RWY 34

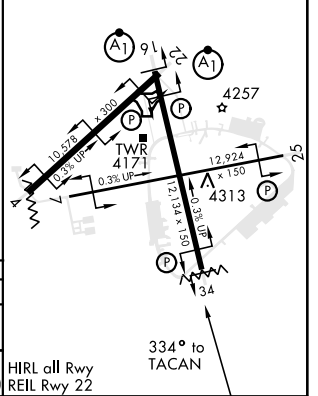
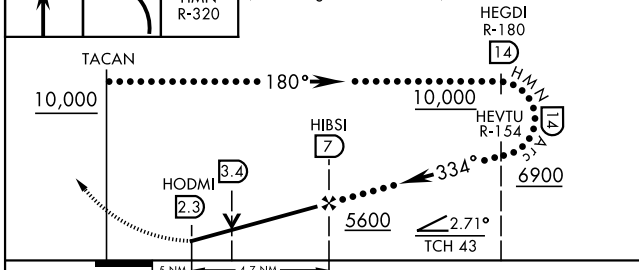
TACAN HMN Chan 92	APCH CRS 334°	Rwy ldg 12,134 TDZE 4058 Arpt Elev 4093	JAL-7 [USAF]	HOLLOMAN AFB (KHMN)
-----------------------------	-------------------------	--	--------------	---------------------

NA MISSED APPROACH: Climb straight ahead to 7000, passing 5000 turn left to intercept HMN TACAN R-320 to JOBAM and hold.

ATIS ★ 273.5	ALBUQUERQUE CENTER 132.65 257.6	HOLLOMAN APP CON 120.6 269.225	HOLLOMAN TOWER ★ 119.3 255.9	GND CON 127.05 275.8	CLNC DEL 126.7 289.4
------------------------	---	--	--	--------------------------------	--------------------------------



5000	7000	VGSI and descent angles not coincident (VGSI Angle 2.50/TCH 43).	ELEV 4093	TDZE 4058
------	------	--	-----------	-----------



CATEGORY	A	B	C	D	E
S-34	4520-1	462 (500-1)	4520-1 $\frac{3}{4}$	462 (500-1 $\frac{3}{8}$)	
C CIRCLING	4740-1	647 (700-1)	4740-1 $\frac{3}{4}$ 647 (700-1 $\frac{3}{4}$)	4760-2 667 (700-2)	4760-2 $\frac{1}{4}$ 667 (700-2 $\frac{1}{4}$)

HIRL all Rwy
REIL Rwy 22

HI-TACAN RWY 34

SW-1, 07 OCT 2021 to 04 NOV 2021

SW-1, 07 OCT 2021 to 04 NOV 2021