

ILS or LOC X RWY 16

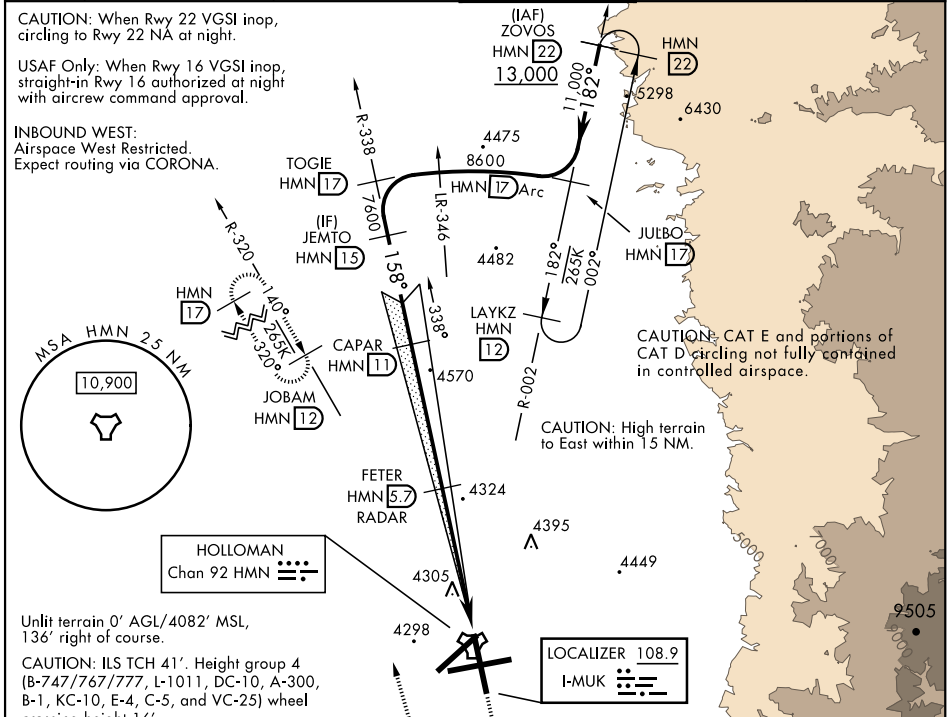
LOC I-MUK 108.9	APCH CRS 158°	Rwy ldg 12,134 TDZE 4083 Arpt Elev 4093
---------------------------	-------------------------	---

AL-7 [USAF]

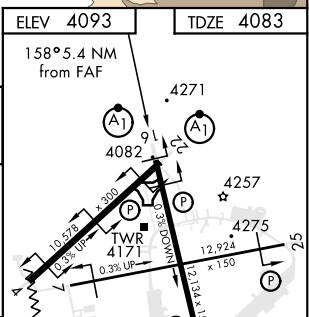
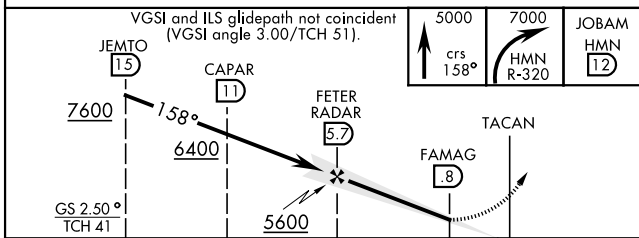
HOLLOMAN AFB (KHMN)

RADAR or DME required.		ALSIF-1 	MISSED APPROACH: Climb straight ahead to 7000, passing 5000 turn right and intercept HMN R-320 outbound to JOBAM and hold.
* When ALS inop, increase CAT CDE vis to 1 3/8 miles.			

ATIS * 273.5	ALBUQUERQUE CENTER 132.65 257.6	HOLLOMAN APP CON 120.6 269.225	HOLLOMAN TOWER * 119.3 255.9	GND CON 127.05 275.8	CLNC DEL 126.7 289.4
------------------------	---	--	--	--------------------------------	--------------------------------



ELEV 4093	TDZE 4083
-----------	-----------



	A	B	C	D	E
S-ILS 16		4333-1	250	(300-1)	
S-LOC 16*		4580-1	497	(500-1)	
CIRCLING	4740-1 647 (700-1)	4740-1 3/4 647 (700-1 3/4)	4760-2 667 (700-2)	4760-2 1/4 667 (700-2 1/4)	

HIRL all rwy REIL Rwy 22	FAF to MAP 4.9 NM					
	Knots	60	90	120	150	180
	Min:Sec	4:54	3:16	2:27	1:58	1:38

ILS or LOC X RWY 16

SW-1, 07 OCT 2021 to 04 NOV 2021

SW-1, 07 OCT 2021 to 04 NOV 2021