

IZZYY ONE DEPARTURE (RNAV) (IZZYY1•IZZYY)

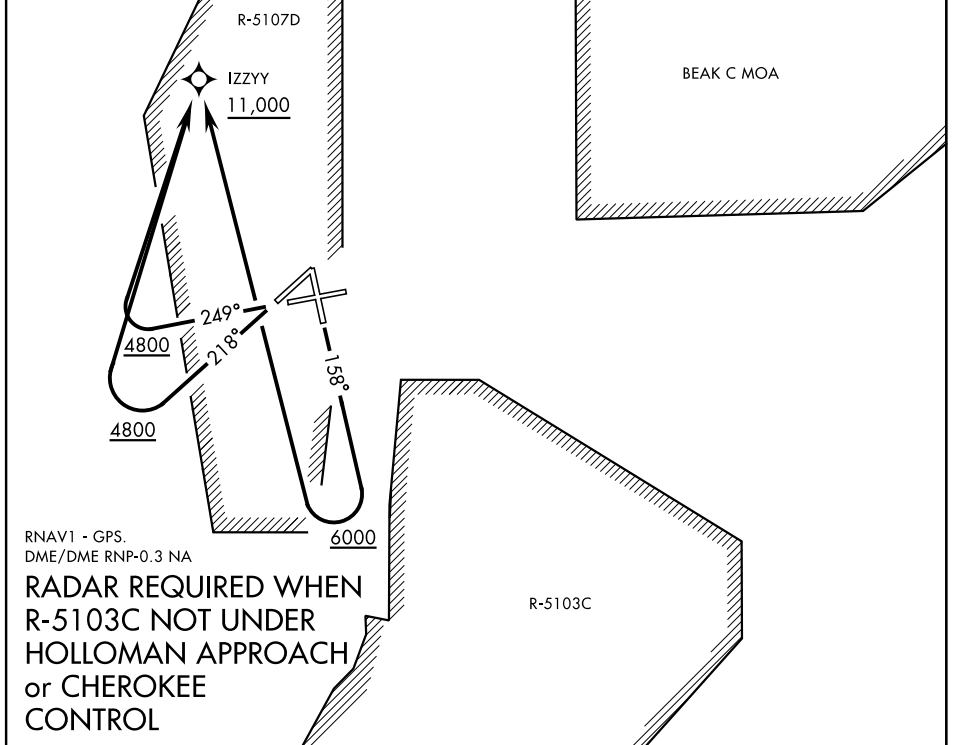
ALAMOGORDO, NEW MEXICO

ATIS ★ 273.5
 CLNC DEL
 126.7 289.4
 GND CON
 127.05 275.8
 HOLLOMAN TOWER ★
 119.3 255.9
 HOLLOMAN DEP CON
 128.1 284.0
 ALBUQUERQUE CENTER
 132.65 257.6

AL-7 [USAF]

Rwy	Knots	60	120	180	240	300	360
16	V/V(fpm)	425	850	1275	1700	2125	2550
22	V/V(fpm)	416	832	1248	1664	2080	2496
25	V/V(fpm)	480	960	1440	1920	2400	2880

Minimum climb to 11,000



RNAV1 - GPS
 DME/DME RNP-0.3 NA

**RADAR REQUIRED WHEN
 R-5103C NOT UNDER
 HOLLOMAN APPROACH
 or CHEROKEE
 CONTROL**

DEPARTURE ROUTE DESCRIPTION

TAKE-OFF RWY 16: Climb on track 158° when leaving 6000 turn right direct IZZYY, then via assigned routing. Cross IZZYY at or above 11,000.

TAKE-OFF RWY 22: Climb on track 218° when leaving 4800 turn right direct IZZYY, then via assigned routing. Cross IZZYY at or above 11,000.

TAKE-OFF RWY 25: Climb on track 249° when leaving 4800 turn right direct IZZYY, then via assigned routing. Cross IZZYY at or above 11,000.

IZZYY ONE DEPARTURE (RNAV) (IZZYY1•IZZYY)

SW-1, 07 OCT 2021 to 04 NOV 2021

SW-1, 07 OCT 2021 to 04 NOV 2021