

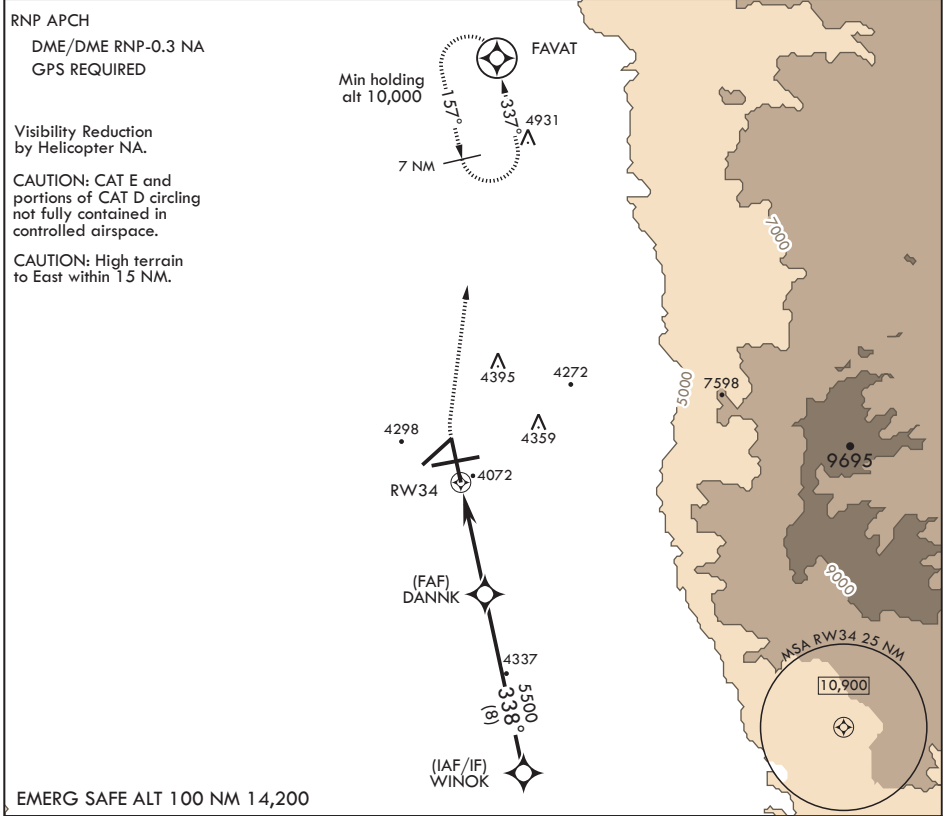
APCH CRS 338°	Rwy Idg 12,134
	TDZE 4058
	Arpt Elev 4093

AL-7 (USAF)

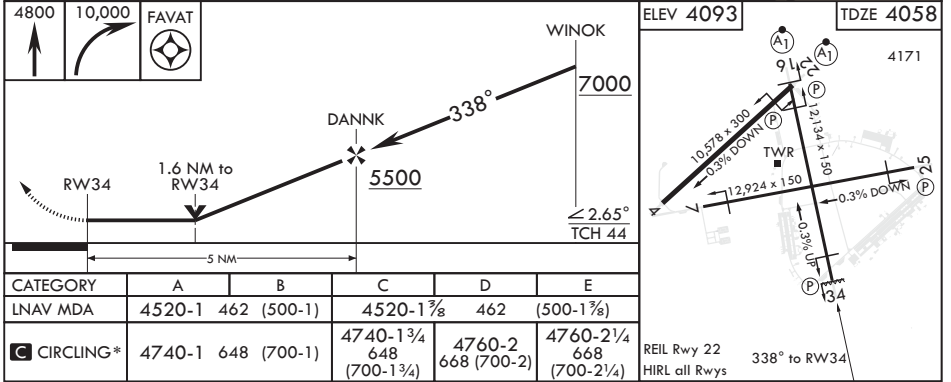
HOLLOMAN AFB (KHMN)

V * Circling to Rwy 4 NA at night, when Rwy 16, 22 VGSi inop, circling to Rwy 16, 22 NA at night. MISSED APPROACH: Climb to 4800 then climbing turn to 10,000 direct FAVAT and hold, continue climb-in-hold to 10,000.

ATIS* 273.5	ALBUQUERQUE CENTER 132.65 257.6	APP CON 120.6 269.225	TOWER* 119.3 255.9	GND CON 127.05 275.8	CLNC DEL 126.7 289.4
----------------	------------------------------------	--------------------------	-----------------------	-------------------------	-------------------------



EMERG SAFE ALT 100 NM 14,200



SW-1, 07 OCT 2021 to 04 NOV 2021

SW-1, 07 OCT 2021 to 04 NOV 2021