

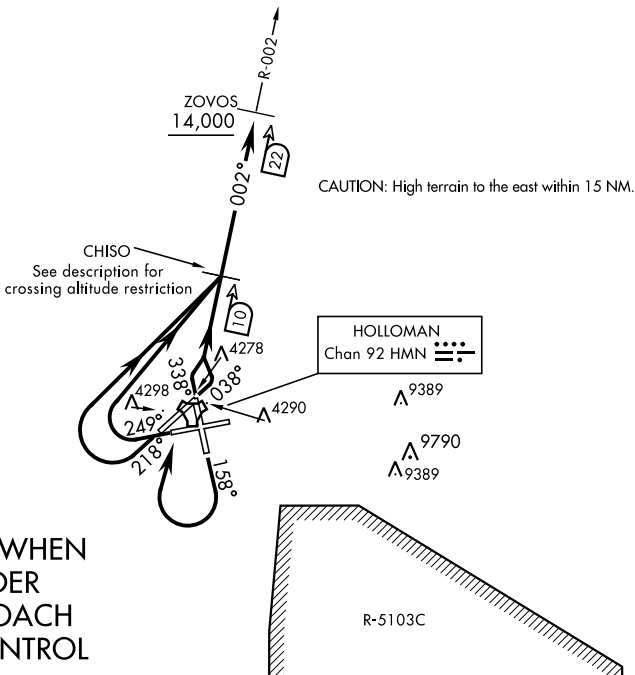
# ZOVOS ONE DEPARTURE (ZOVOS1•ZOVOS) SHL-7 (USAF)

ALAMOGORDO, NEW MEXICO

ATIS ★ 273.5  
 CLNC DEL  
 126.7 289.4  
 GND CON  
 127.05 275.8  
 HOLLOMAN TOWER ★  
 119.3 255.9  
 HOLLOMAN DEP CON  
 128.1 284.0  
 ALBUQUERQUE CENTER  
 132.65 257.6

Rwy	Knots	60	120	180	240	300	360
4	V/V(fpm)	457	914	1371	1828	2285	2742
16	V/V(fpm)	435	870	1305	1740	2175	2610
22	V/V(fpm)	435	870	1305	1740	2175	2610
25	V/V(fpm)	421	842	1263	1684	2105	2526
34	V/V(fpm)	458	916	1374	1832	2290	2748

Minimum climb to 14,100



**RADAR REQUIRED WHEN  
 R-5103C NOT UNDER  
 HOLLOMAN APPROACH  
 OR CHEROKEE CONTROL**

## DEPARTURE ROUTE DESCRIPTION

**TAKE-OFF RWY 4:** Climb on track 038° until HMN TACAN 1.4 DME. Turn left to intercept HMN R-002 to CHISO and cross at or above 7700. Continue outbound to ZOVOS and cross at or above 14,000.

**TAKE-OFF RWY 16:** Track 158° until HMN TACAN 2.9 DME. Turn right to intercept HMN R-002 to CHISO and cross at 7900. Continue outbound to ZOVOS and cross at or above 14,000.

**TAKE-OFF RWY 22:** Climb on track 218° until HMN TACAN 2.6 DME. Turn right to intercept HMN R-002 to CHISO. Cross at or above 7900. Continue outbound to ZOVOS and cross at or above 14,000.

**TAKE-OFF RWY 25:** Climb on track 249° until HMN TACAN 2.6 DME. Turn right to intercept HMN R-002 to CHISO. Cross CHISO at or above 8100. Continue outbound to ZOVOS and cross at or above 14,000.

**TAKE-OFF RWY 34:** Climb on track 338° until HMN TACAN 1.4 DME. Turn right to intercept HMN R-002 to CHISO. Cross CHISO at or above 7700. Continue outbound to ZOVOS and cross at or above 14,000.

# ZOVOS ONE DEPARTURE (ZOVOS1•ZOVOS)

ALAMOGORDO, NEW MEXICO

Orig 01FEB18

HOLLOMAN AFB (KHMN)

SW-1, 07 OCT 2021 to 04 NOV 2021

SW-1, 07 OCT 2021 to 04 NOV 2021