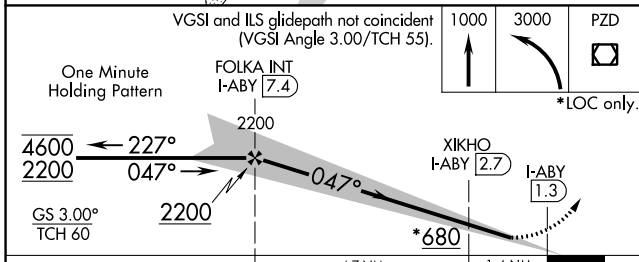
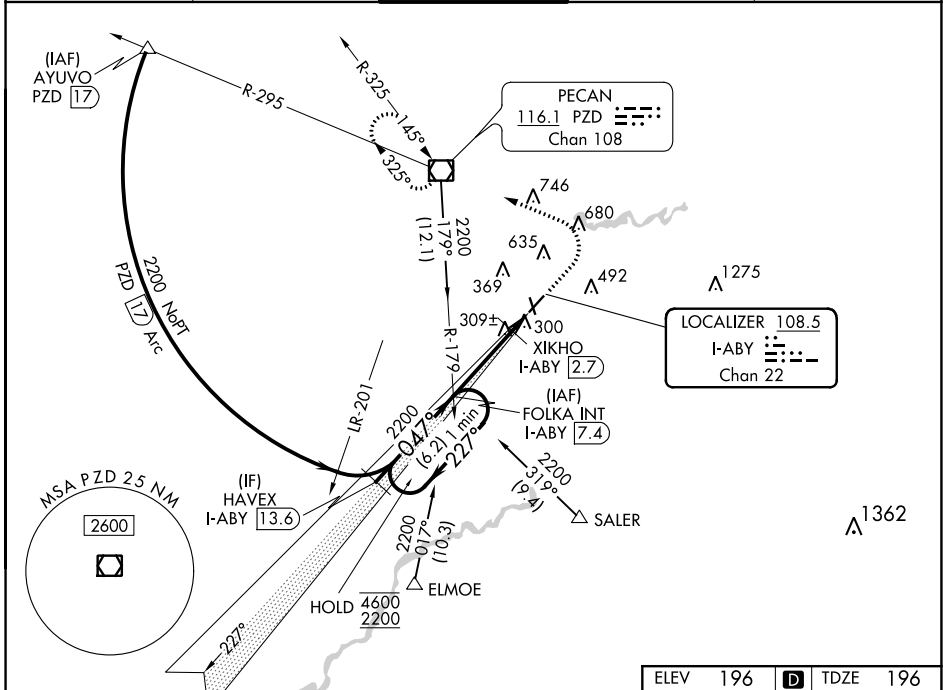


LOC/DME I-ABY 108.5 Chan 22	APP CRS 047°	Rwy Idg 6601 TDZE 196 Apt Elev 196
---	------------------------	---

ILS or LOC RWY 5

SOUTHWEST GEORGIA RGNL (ABY)

From ELMOE and SALER: RNAV-1 GPS required.		MALSR	MISSED APPROACH: Climb to 1000 then climbing left turn to 3000 direct PZD VOR/DME and hold.	
<p>▼ For inop ALS, increase S-LOC 5 Cats C/D visibility to 1½ SM and XIKHO fix minimums S-LOC 5 Cats C/D visibility to RVR 5500.</p>				
ATIS 133.05	JACKSONVILLE CENTER 125.75 226.8	ALBANY TOWER * 120.25 (CTAF) 0336.4	GND CON 121.9 348.6	UNICOM 122.95



ELEV 196	TDZE 196
047° 6.1 NM from FAF	
HIRL Rwy 5-23	
MIRL Rwy 17-35	
REIL Rws 17 and 23	
FAF to MAP 6.1 NM	
Knots	60 90 120 150 180
Min:Sec	6:06 4:04 3:03 2:26 2:02

SE-4, 07 OCT 2021 to 04 NOV 2021

SE-4, 07 OCT 2021 to 04 NOV 2021