

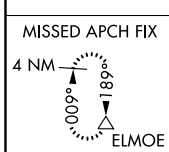
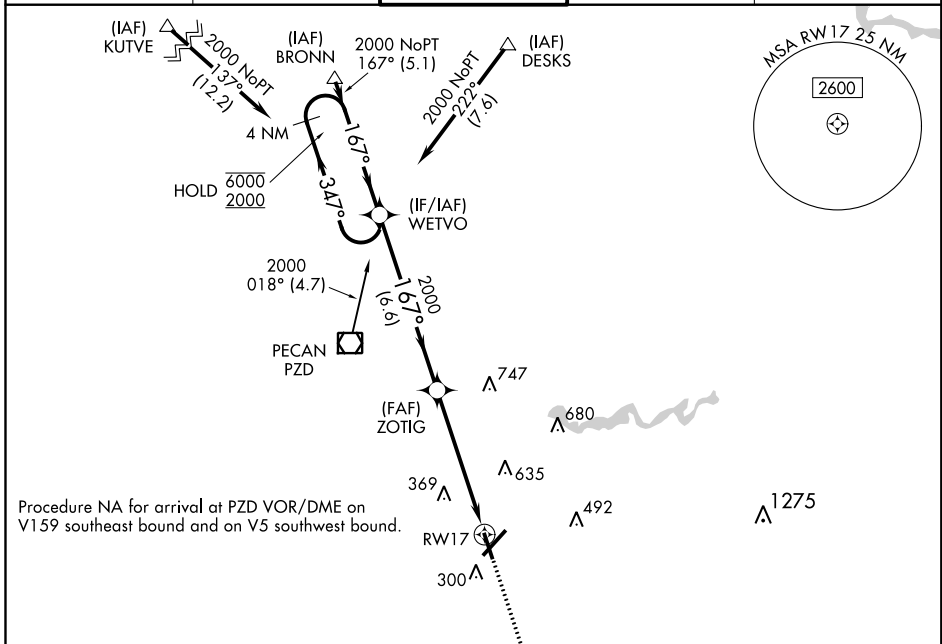
WAAS CH 48815 W17A	APP CRS 167°	Rwy Idg TDZE Apt Elev	5219 196 196
--	------------------------	-----------------------------	---

RNAV (GPS) RWY 17

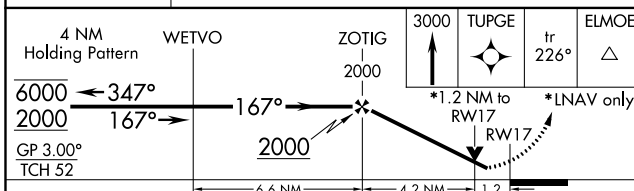
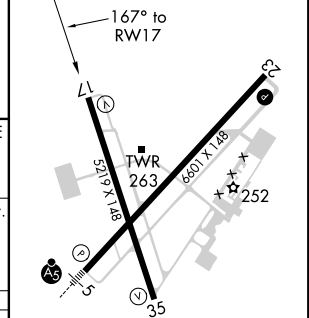
SOUTHWEST GEORGIA RGNL (ABY)

RNP APCH.		MISSED APPROACH: Climb to 3000 direct TUPGE and on track 226° to ELMOE and hold.	
▼ Rwy 17 helicopter visibility reduction below 3/4 SM NA. For uncompensated Baro-VNAV systems, LNAV/VNAV NA below -7°C or above 54°C.			

ATIS 133.05	JACKSONVILLE CENTER 125.75 226.8	ALBANY TOWER * 120.25 (CTAF) 0336.4	GND CON 121.9 348.6	UNICOM 122.95
-----------------------	--	---	-------------------------------	-------------------------



ELEV 196	D	TDZE 196
----------	----------	----------



CATEGORY	A	B	C	D
LPV DA		534-1 1/4	338 (400-1 1/4)	
LNAV/VNAV DA		603-1 1/2	407 (500-1 1/2)	
LNAV MDA	640-1	444 (500-1)	640-1 1/4 444 (500-1 1/4)	640-1 1/2 444 (500-1 1/2)
C CIRCLING	640-1 444 (500-1)	660-1 464 (500-1)	940-2 1/4 744 (800-2 1/4)	940-2 1/2 744 (800-2 1/2)

HIRL Rwy 5-23
MIRL Rwy 17-35
REIL Rws 17 and 23

SE-4, 07 OCT 2021 to 04 NOV 2021

SE-4, 07 OCT 2021 to 04 NOV 2021