

WAAS CH 97415 W35A	APP CRS 347°	Rwy Idg 5219 TDZE 196 Apt Elev 196
--	------------------------	---

RNAV (GPS) RWY 35

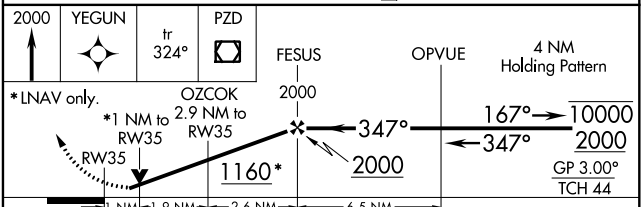
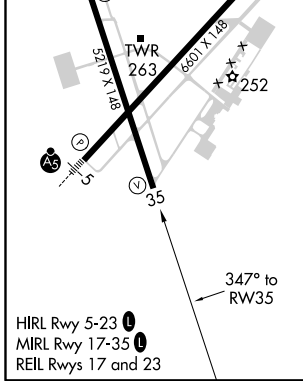
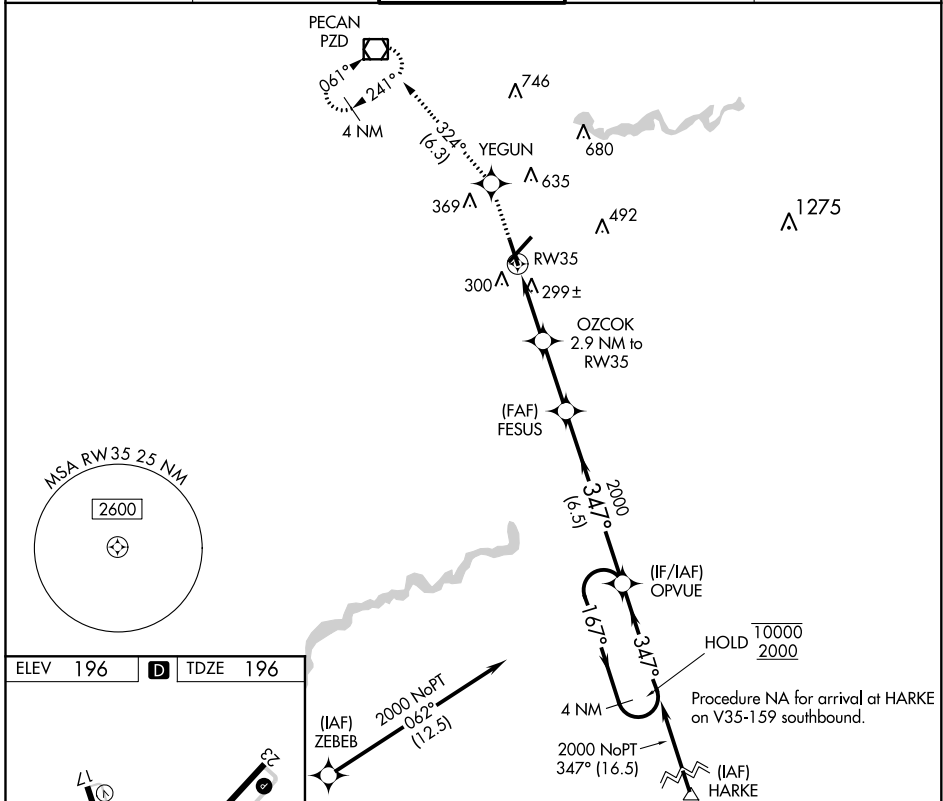
SOUTHWEST GEORGIA RGNL (ABY)

RNP APCH.

▼ For uncompensated Baro-VNAV systems, LNAV/VNAV NA below -7°C or above 54°C. Rwy 35 helicopter visibility reduction below ¼ SM NA.

MISSED APPROACH: Climb to 2000 direct YEGUN and on track 324° to PZD VOR/DME and hold.

ATIS 133.05	JACKSONVILLE CENTER 125.75 226.8	ALBANY TOWER * 120.25 (CTAF) 0336.4	GND CON 121.9 348.6	UNICOM 122.95
-----------------------	--	---	-------------------------------	-------------------------



2000	YEGUN	tr 324°	PZD	FESUS	OPVUE	4 NM Holding Pattern
*LNAV only.		OZCOK	2000	10000	2000	GP 3.00° TCH 44
*1 NM to RW35		2.9 NM to RW35	347°	167°	347°	
1 NM	1.9 NM	2.6 NM	6.5 NM			
CATEGORY	A	B	C	D		
LPV DA		495-1	299 (300-1)			
LNAV/VNAV DA		475-1	279 (300-1)			
LNAV MDA		560-1	364 (400-1)			
CIRCLING	640-1 444 (500-1)	660-1 464 (500-1)	940-2¼ 744 (800-2¼)	940-2½ 744 (800-2½)		

SE-4, 07 OCT 2021 to 04 NOV 2021

SE-4, 07 OCT 2021 to 04 NOV 2021