

WAAS CH <b>78000</b> W05A	APP CRS <b>047°</b>	Rwy Idg <b>6601</b> TDZE <b>196</b> Apt Elev <b>196</b>
---------------------------------	------------------------	---

# RNAV (GPS) RWY 5

SOUTHWEST GEORGIA RGNL (A.B.Y)

RNP APCH.

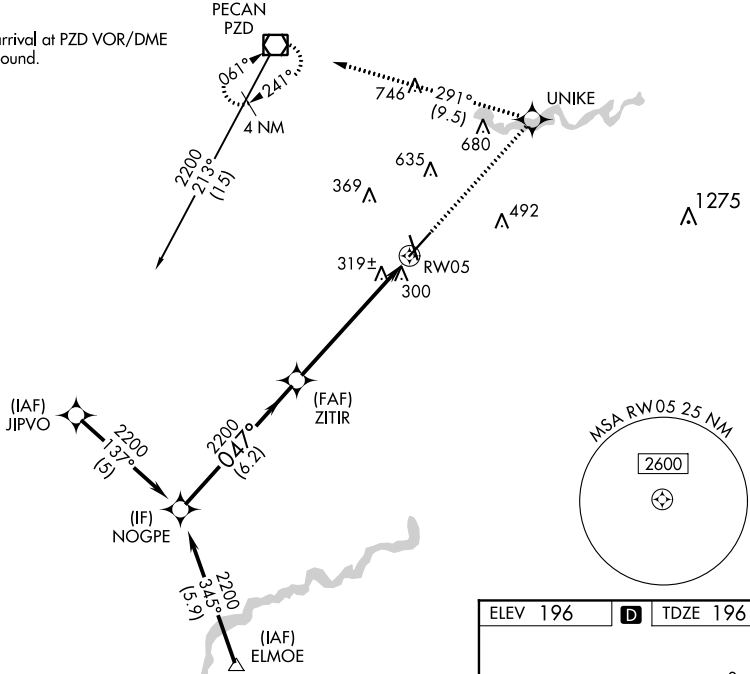
▼ For uncompensated Baro-VNAV systems, LNAV/VNAV NA below -7°C or above 54°C. For inop ALS, increase LNAV Cat D visibility to RVR 6000.  
 ▲ \*\* RVR 1800 authorized with use of FD or AP or HUD to DA.



MISSED APPROACH: Climb to 2000 direct UNIKE and left turn on track 291° to PZD VOR/DME and hold.

ATIS <b>133.05</b>	JACKSONVILLE CENTER <b>125.75 226.8</b>	ALBANY TOWER * <b>120.25 (CTAF) 0336.4</b>	GND CON <b>121.9 348.6</b>	UNICOM <b>122.95</b>
-----------------------	--	---	-------------------------------	-------------------------

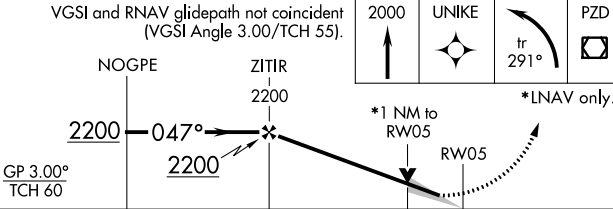
Procedure NA for arrival at PZD VOR/DME on V35-159 northbound.



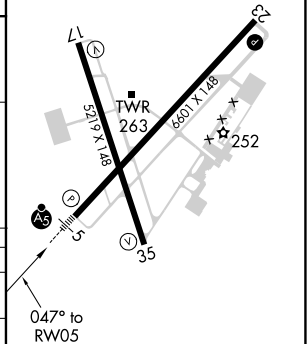
SE-4, 07 OCT 2021 to 04 NOV 2021

SE-4, 07 OCT 2021 to 04 NOV 2021

VGSI and RNAV glidepath not coincident (VGSI Angle 3.00/TCH 55).



ELEV 196	<b>D</b>	TDZE 196
----------	----------	----------



CATEGORY	A	B	C	D
LPV DA**		396/24	200 (200-½)	
LNAV/VNAV DA		635/50	439 (500-1)	
LNAV MDA	580/24	384 (400-½)		580/50 384 (400-1)
<b>C</b> CIRCLING	640-1 444 (500-1)	660-1 464 (500-1)	940-2¼ 744 (800-2¼)	940-2½ 744 (800-2½)

HIRL Rwy 5-23 **I**  
 MIRL Rwy 17-35 **I**  
 REIL Rwys 17 and 23