

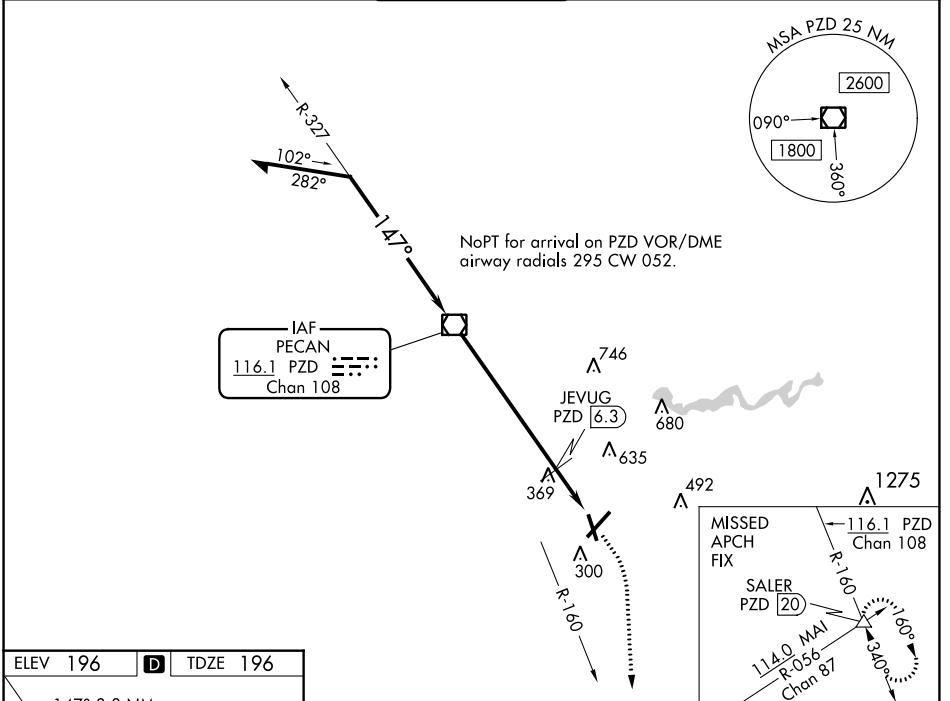
VOR/DME PZD 116.1 Chan 108	APP CRS 147°	Rwy Idg 5219 TDZE 196 Apt Elev 196
--	------------------------	---

VOR RWY 17

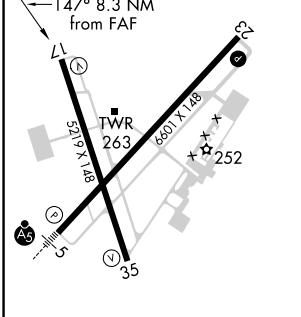
SOUTHWEST GEORGIA RGNL (ABY)

▼ Rwy 17 helicopter visibility reduction below 3/4 SM NA.
▲ MISSED APPROACH: Climb to 1000 then climbing right turn to 3000 on heading 170° and PZD VOR/DME R-160 to SALER INT/20 DME and hold.

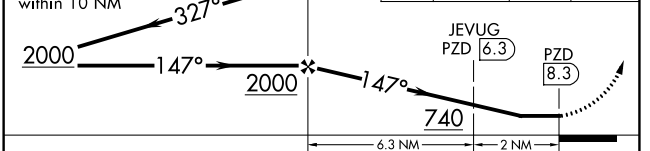
ATIS 133.05	JACKSONVILLE CENTER 125.75 226.8	ALBANY TOWER * 120.25(CTAF) 0336.4	GND CON 121.9 348.6	UNICOM 122.95
-----------------------	--	--	-------------------------------	-------------------------



ELEV 196	D	TDZE 196
-----------------	----------	-----------------



VGSI and descent angles not coincident (VGSI Angle 3.00/TCH 52).
 Remain within 10 NM



CATEGORY	A	B	C	D
S-17	740-1	544 (600-1)	740-1½	544 (600-1½)
C CIRCLING	740-1	544 (600-1)	940-2¼ 744 (800-2¼)	940-2½ 744 (800-2½)
JEVUG FIX MINIMUMS				
S-17	640-1	444 (500-1)	640-1¾	444 (500-1¾)
C CIRCLING	640-1 444 (500-1)	660-1 464 (500-1)	940-2¼ 744 (800-2¼)	940-2½ 744 (800-2½)

HIRL Rwy 5-23 **1**
 MIRL Rwy 17-35 **1**
 REIL Rwy 17 and 23

FAF to MAP 8.3 NM					
Knots	60	90	120	150	180
Min:Sec	8:18	5:32	4:09	3:19	2:46

SE-4, 07 OCT 2021 to 04 NOV 2021

SE-4, 07 OCT 2021 to 04 NOV 2021