

LOC I-BTL	APP CRS	Rwy Idg	10004
110.5	227°	TDZE	929
		Apt Elev	952

ILS or LOC RWY 23R

BATTLE CREEK EXEC AT KELLOGG FLD (BTL)

DME required, RADAR required for procedure entry.

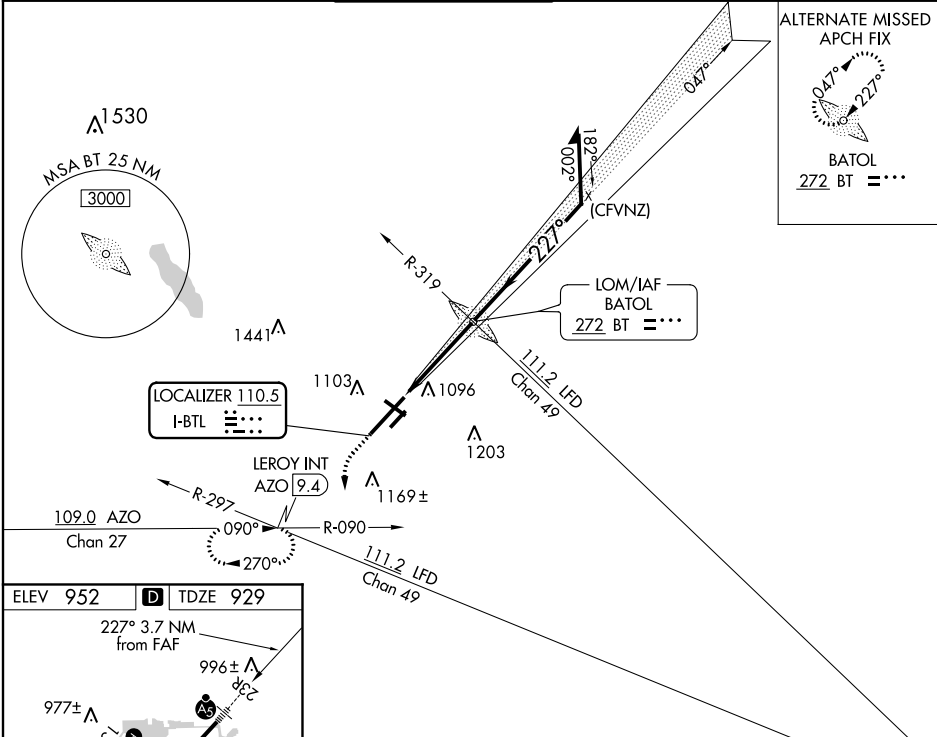
⚠ Circling Rwy 5R, 23L NA. Circling Rwy 31 NA at night. When local altimeter setting not received, use Grand Rapids altimeter setting: increase DA to 1236 feet and increase all MDA 120 feet. Increase S-LOC 23R Cats C/D visibility to 1 1/4 SM, Circling Cat C visibility to 2 SM and Cat D visibility to 2 1/4 SM. For inop ALS, increase S-LOC 23R Cat C/D visibility to 1 3/8 SM. For inop ALS when using Grand Rapids altimeter setting, increase S-ILS 23R all Cats visibility to RVR 5000. #RVR 1800 authorized with use of FD or AP or HUD to DA (NA when using Grand Rapids altimeter setting).

MALSR



MISSED APPROACH: Climb to 1500 then climbing left turn to 3000 on heading 215° and AZO VOR/DME R-090 to LEROY/AZO 9.4 DME and hold, continue climb-in-hold to 3000.

ATIS	GREAT LAKES APP CON *	BATTLE CREEK TOWER *	GND CON	UNICOM	CTAF
128.325	119.2 239.25	126.825	121.7	122.95	126.825 ①



ALTERNATE MISSED APCH FIX

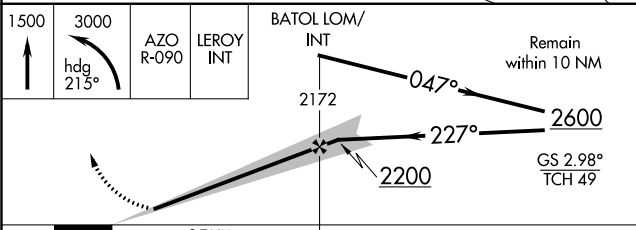
BATOL
272 BT = ***

ELEV 952 D TDZE 929

HIRL Rwy 5L-23R ①
 MIRL Rwy 13-31 and 5R-23L ①
 REL Rwy 5L, 5R, 13, 23L and 31L ①

FAF to MAP 3.7 NM

Knots	60	90	120	150	180
Min:Sec	3:42	2:28	1:51	1:29	1:14



CATEGORY	A	B	C	D
S-ILS 23R	# 1 129/24 200 (200-1/2)			
S-LOC 23R	1400/24	471 (500-1/2)	1400/50	471 (500-1)
C CIRCLING	1420-1 468 (500-1)	1480-1 528 (600-1)	1520-1 1/2 568 (600-1 1/2)	1520-2 568 (600-2)