

WAAS CH <b>56411</b> <b>W23A</b>	APP CRS <b>227°</b>	Rwy Idg <b>10004</b> TDZE <b>929</b> Apt Elev <b>952</b>
--	------------------------	--

# RNAV (GPS) RWY 23R

BATTLE CREEK EXEC AT KELLOGG FLD (BTL)

RNP APCH.

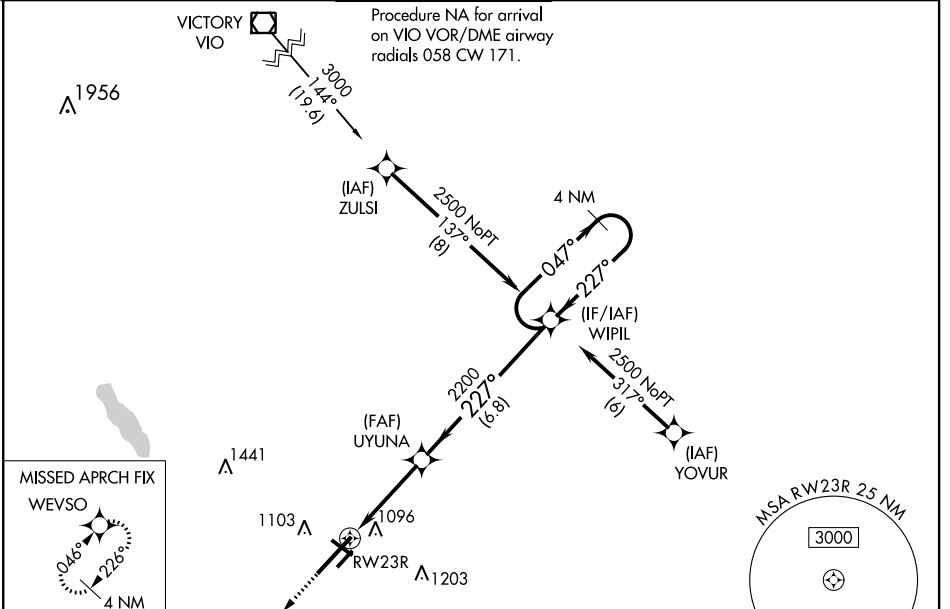
**⚠** Circling NA to Rwy 5R and 23L. Circling Rwy 31 NA at night.  
For uncompensated Baro-VNAV systems, LNAV/VNAV NA below -20°C or above 54°C.  
\*\*RVR 1800 authorized with use of FD or AP or HUD to DA.

MALSR



MISSED APPROACH:  
Climb to 2500 direct  
WEVSO and hold.

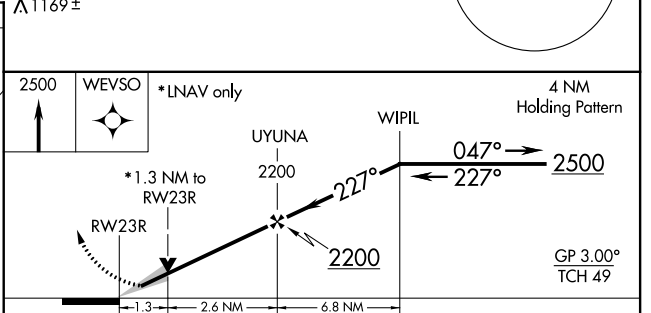
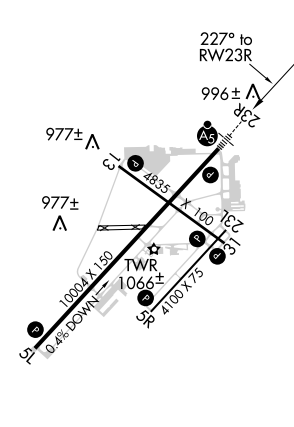
ATIS <b>128.325</b>	GREAT LAKES APP CON * <b>119.2 239.25</b>	BATTLE CREEK TOWER * <b>126.825</b>	GND CON <b>121.7</b>	UNICOM <b>122.95</b>	CTAF <b>126.825</b> <b>📍</b>
------------------------	--	--	-------------------------	-------------------------	---------------------------------



EC-1, 07 OCT 2021 to 04 NOV 2021

EC-1, 07 OCT 2021 to 04 NOV 2021

ELEV <b>952</b>	<b>D</b>	TDZE <b>929</b>
-----------------	----------	-----------------



CATEGORY	A	B	C	D
LPV DA **		1129/24	200 (200-½)	
LNAV/VNAV DA		1258/32	329 (400-⅝)	
LNAV MDA	1380/24	451 (500-½)	1380/45	451 (500-⅞)
<b>📍</b> CIRCLING	1420-1 468 (500-1)	1480-1 528 (600-1)	1520-1½ 568 (600-1½)	1520-2 568 (600-2)

HIRL Rwy 5L-23R **📍**  
MIRL Rwy 13-31 and 5R-23L **📍**  
REIL Rwy 5L, 5R, 13, 23L and 31L **📍**