

WAAS CH 61220 W05A	APP CRS 047°	Rwy Idg 10004 TDZE 952 Apt Elev 952
--	------------------------	--

RNAV (GPS) RWY 5L

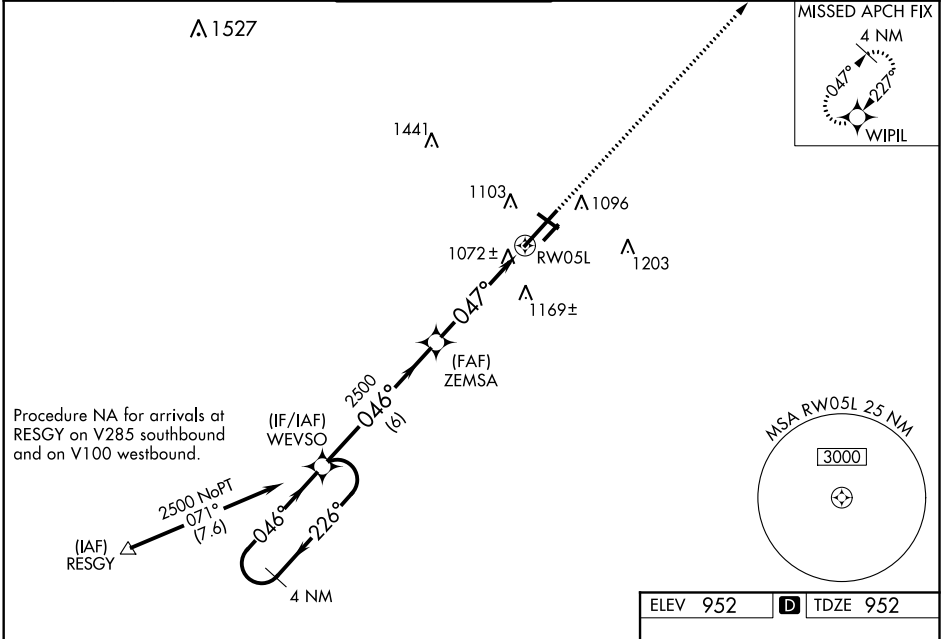
BATTLE CREEK EXEC AT KELLOGG FLD (BTL)

RNP APCH:

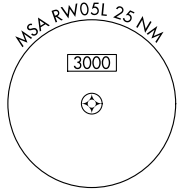
▼ For uncompensated Baro-VNAV systems, LNAV/VNAV NA below -16°C or above 37°C.
 ▲ Rwy 5L helicopter visibility reduction below 3/4 SM NA. When local altimeter setting not received, use Grand Rapids altimeter setting: increase all DAs 106 feet and all visibilities 3/8 SM; increase all MDAs 120 feet and increase LNAV Cats C and D visibility 3/8 SM and Circling Cat C visibility 1/2 SM and Cat D visibility 1/4 SM. VDP and Baro-VNAV NA when using Grand Rapids altimeter setting. Circling Rwy 31 NA at night. Circling NA to Rwys 5R and 23L.

MISSED APPROACH:
 Climb to 2500 direct
 WIPIL and hold.

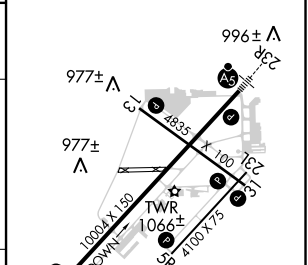
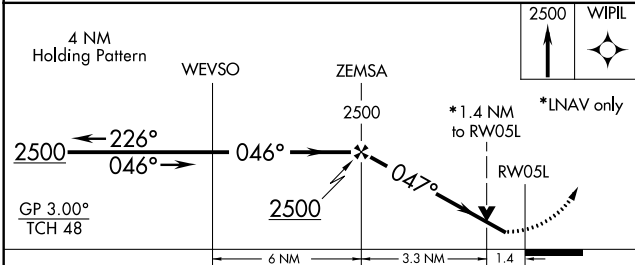
ATIS 128.325	GREAT LAKES APP CON * 119.2 239.25	BATTLE CREEK TOWER * 126.825	GND CON 121.7	UNICOM 122.95	CTAF 126.825 ①
------------------------	--	--	-------------------------	-------------------------	--------------------------



Procedure NA for arrivals at RESGY on V285 southbound and on V100 westbound.



ELEV 952	D TDZE 952
----------	------------



CATEGORY	A	B	C	D
LPV DA		1317-1 1/4	365 (400-1 1/4)	
LNAV/VNAV DA		1253-1	301 (400-1)	
LNAV MDA	1440-1	488 (500-1)	1440-1 3/8	488 (500-1 3/8)
CIRCLING	1440-1 488 (500-1)	1480-1 528 (600-1)	1520-1 1/2 568 (600-1 1/2)	1520-2 568 (600-2)

HIRL Rwy 5L-23R ①
 MRL Rwy 13-31 and 5R-23L ①
 REIL Rws 5L, 5R, 13, 23L and 31 ①

EC-1, 07 OCT 2021 to 04 NOV 2021

EC-1, 07 OCT 2021 to 04 NOV 2021