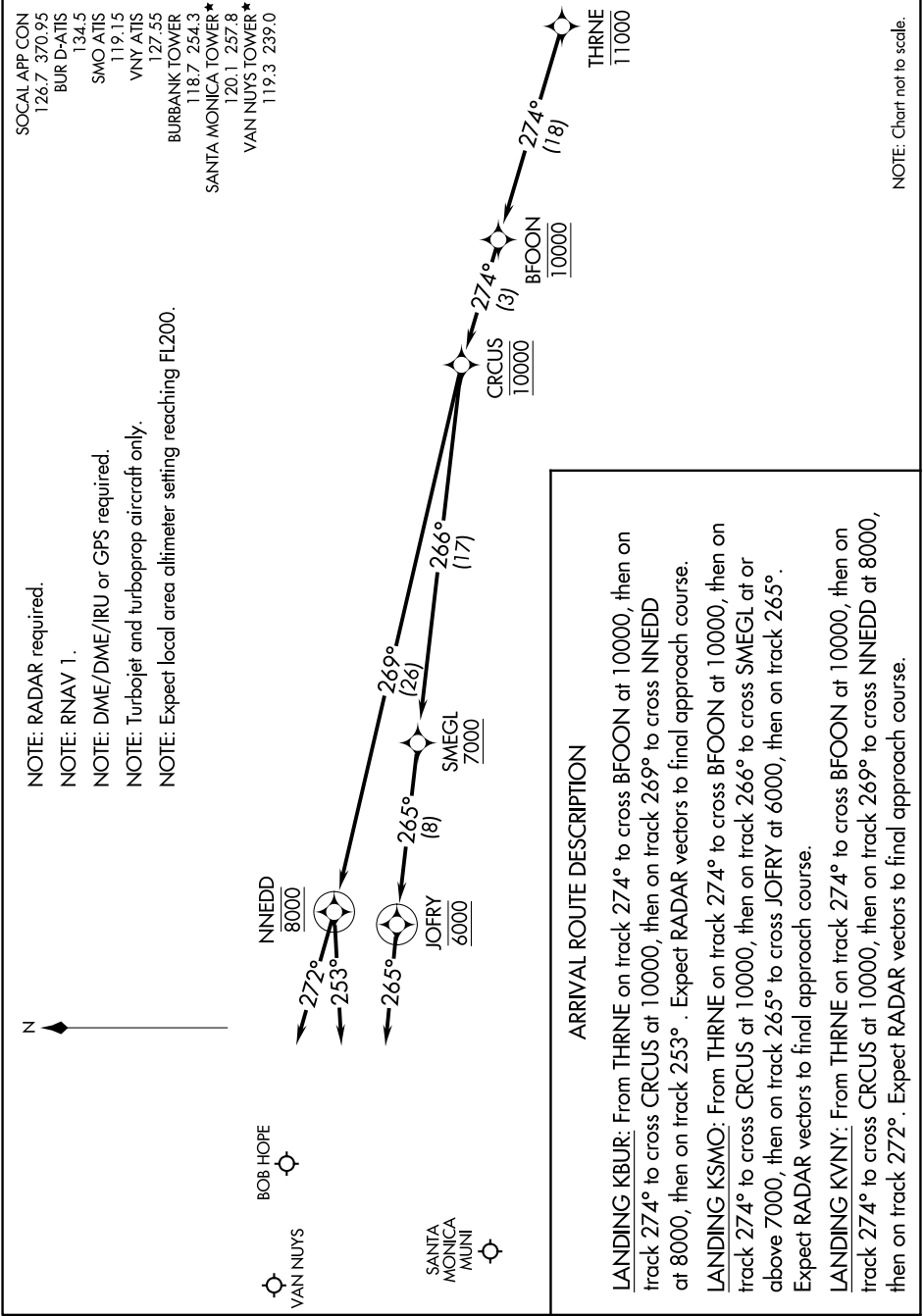


THRNE THREE ARRIVAL (RNAV) Arrival Routes

AL-67 (FAA)

BURBANK, CALIFORNIA

SW-3, 07 OCT 2021 to 04 NOV 2021



- NOTE: RADAR required.
- NOTE: RNAV 1.
- NOTE: DME/DME/IRU or GPS required.
- NOTE: Turbojet and turboprop aircraft only.
- NOTE: Expect local area altimeter setting reaching FL200.

- SOCAL APP CON
126.7 370.95
- BUR D-ATIS
134.5
- SMO ATIS
119.15
- VNY ATIS
127.55
- BURBANK TOWER
118.7 254.3
- SANTA MONICA TOWER*
120.1 257.8
- VAN NUYS TOWER**
119.3 239.0

ARRIVAL ROUTE DESCRIPTION

LANDING KBUR: From THRNE on track 274° to cross BFOON at 10000, then on track 274° to cross CRCUS at 10000, then on track 269° to cross NNEDD at 8000, then on track 253°. Expect RADAR vectors to final approach course.

LANDING KSMO: From THRNE on track 274° to cross BFOON at 10000, then on track 274° to cross CRCUS at 10000, then on track 266° to cross SMEGL at or above 7000, then on track 265° to cross JOFRY at 6000, then on track 265°. Expect RADAR vectors to final approach course.

LANDING KVNY: From THRNE on track 274° to cross BFOON at 10000, then on track 274° to cross CRCUS at 10000, then on track 269° to cross NNEDD at 8000, then on track 272°. Expect RADAR vectors to final approach course.