

BAGGY TWO ARRIVAL (RNAV)

CHARLESTON, SOUTH CAROLINA

SE-2, 07 OCT 2021 to 04 NOV 2021

DEQUE TRANSITION (DEQUE.BAGGY2) SAVANNAH TRANSITION (SAV.BAGGY2)

From over BAGGY on track 059° to DDENA, thence assigned runway transition.

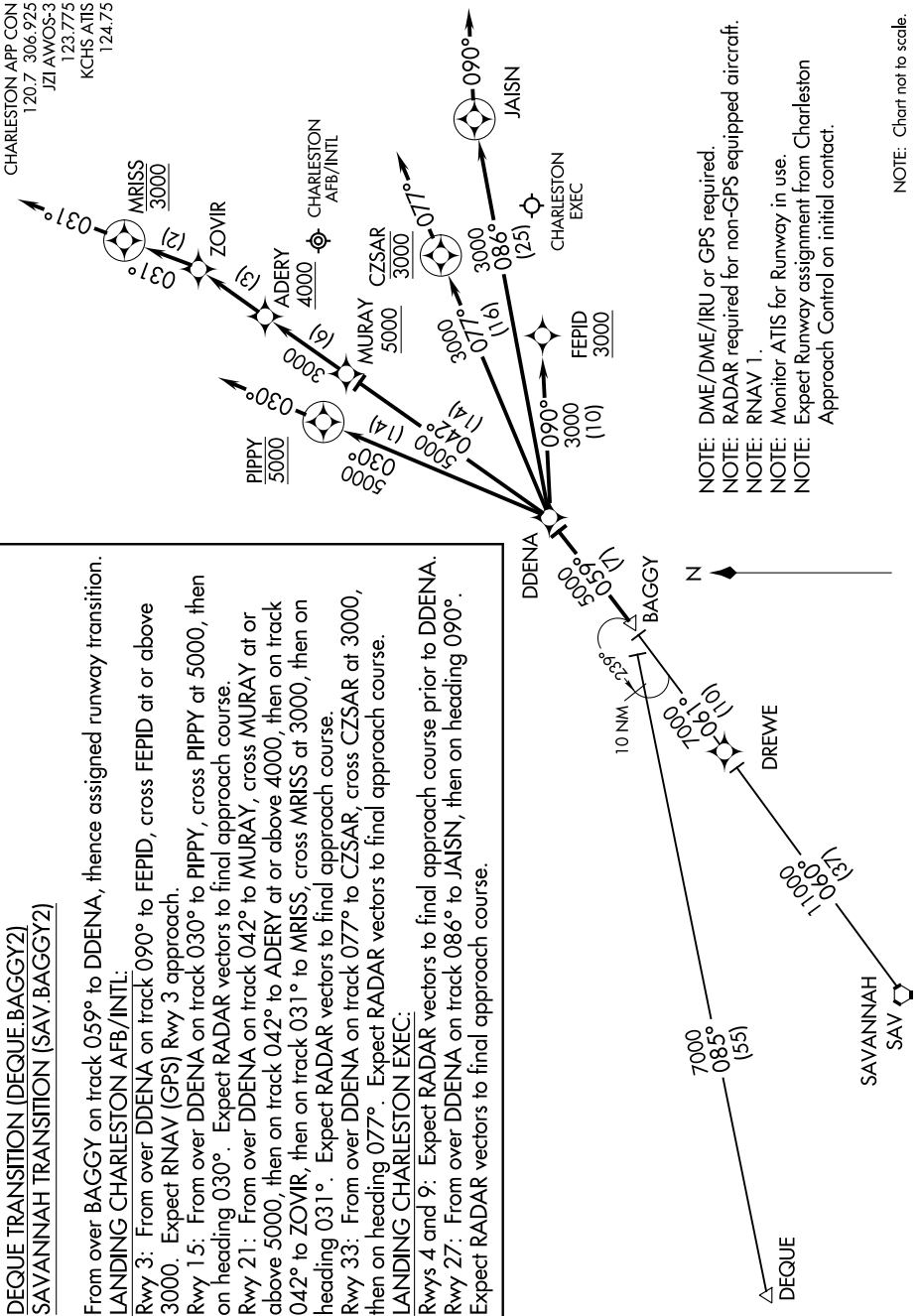
LANDING CHARLESTON AFB/INTL:

- Rwy 3: From over DDENA on track 090° to FEPID, cross FEPID at or above 3000. Expect RNAV (GPS) Rwy 3 approach.
- Rwy 15: From over DDENA on track 030° to PIPPY, cross PIPPY at 5000, then on heading 030°. Expect RADAR vectors to final approach course.
- Rwy 21: From over DDENA on track 042° to MURAY, cross MURAY at or above 5000, then on track 042° to ADERY at or above 4000, then on track 042° to ZOVIR, then on track 031° to MARISS, cross MARISS at 3000, then on heading 031°. Expect RADAR vectors to final approach course.
- Rwy 33: From over DDENA on track 077° to CZSAR, cross CZSAR at 3000, then on heading 077°. Expect RADAR vectors to final approach course.

LANDING CHARLESTON EXEC:

- Rwys 4 and 9: Expect RADAR vectors to final approach course prior to DDENA.
- Rwy 27: From over DDENA on track 086° to JAISN, then on heading 090°. Expect RADAR vectors to final approach course.

CHARLESTON APP CON
120.7 306.925
JZI AWOS-3
123.775
KCHS ATIS
124.75



- NOTE: DME/DME/IRU or GPS required.
- NOTE: RADAR required for non-GPS equipped aircraft.
- NOTE: RNAV 1.
- NOTE: Monitor ATIS for Runway in use.
- NOTE: Expect Runway assignment from Charleston Approach Control on initial contact.

NOTE: Chart not to scale.

BAGGY TWO ARRIVAL (RNAV)

CHARLESTON, SOUTH CAROLINA

SE-2, 07 OCT 2021 to 04 NOV 2021