

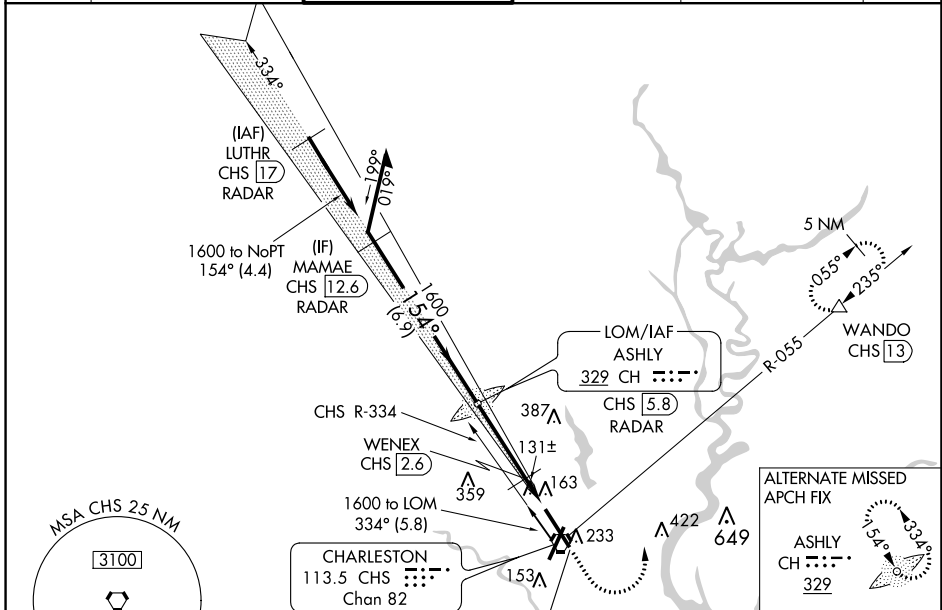
LOC I-CHS <b>109.7</b>	APP CRS <b>154°</b>	Rwy Idg TDZE Apt Elev	<b>9001</b> <b>43</b> <b>46</b>
---------------------------	------------------------	-----------------------------	---------------------------------------

# ILS or LOC RWY 15

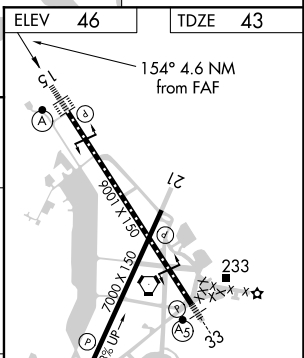
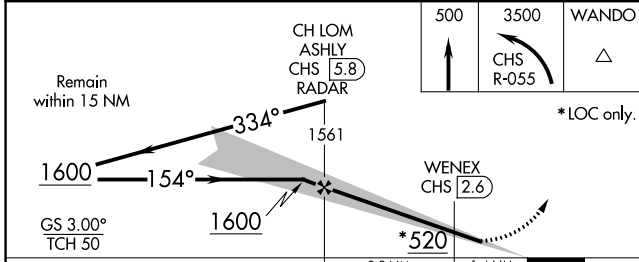
CHARLESTON AFB/INTL (CHS)

DME required.		ALSF-2	MISSED APPROACH: Climb to 500 then climbing left turn to 3500 on CHS VORTAC R-055 to WANDO/CHS VORTAC 13 DME and hold, continue climb-in-hold to 3500.
For inop ALS, increase S-ILS 15 Cat E visibility to RVR 4000 and S-LOC 15 Cats C/D/E visibility to RVR 5500. DME from CHS VORTAC. Simultaneous reception of I-CHS and CHS DME required.			

ATIS <b>124.75</b>	CHARLESTON APP CON <b>120.7 306.925</b>	CHARLESTON TOWER <b>126.0 239.0</b>	GND CON <b>121.9 348.6</b>	CLNC DEL <b>127.325 291.65</b>	CPDLC
-----------------------	--	--	-------------------------------	-----------------------------------	-------



ELEV 46	TDZE 43
---------	---------



CATEGORY	A	B	C	D	E	Knots						
S-ILS 15	243/18		200 (200-½)			60	90	120	150	180		
S-LOC 15	400/24	357 (400-½)	400/30		357 (400-¾)	4:36	3:04	2:18	1:50	1:32		
CIRCLING	540-1	494 (500-1)	540-1½	740-2¼	740-2½	Min:Seq						
			494 (500-1½)	694 (700-2¼)	694 (700-2½)	4:36	3:04	2:18	1:50	1:32		

SE-2, 07 OCT 2021 to 04 NOV 2021

SE-2, 07 OCT 2021 to 04 NOV 2021