

(SWPFX2.SWPFX) 20310

AL-76 (FAA)

CHARLESTON AFB/INTL (CHS)
CHARLESTON, SOUTH CAROLINA

SWPFX TWO DEPARTURE (RNAV)

ATIS
124.75
GND CON
121.9 348.6
CLNC DEL
127.325 291.65
CPDLC
CHARLESTON TOWER
126.0 239.0
CHARLESTON DEP CON
119.3 379.925

**TOP ALTITUDE:
4000**

TAKEOFF MINIMUMS:

Rwys 15, 33: Standard.

Rwys 3, 21: Standard with minimum
climb of 500' per NM
to 560.

NOTE: Transponder code will be issued
by Charleston clearance delivery.

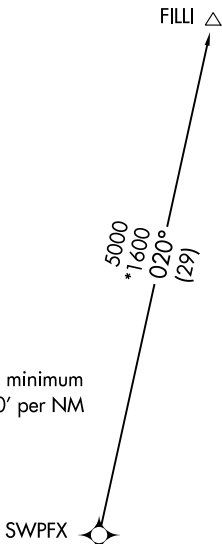
NOTE: If unable to accept climb rate,
advise ATC on initial contact.

NOTE: DME/DME/IRU or GPS Required.

NOTE: RNAV 1.

NOTE: Radar Required for non-GPS
equipped aircraft.

NOTE: For non-GPS equipped aircraft: CHS
and VAN DMEs must be operational
for Takeoff Rwys 15, 21.



SWPFX

5000
*16.00
020°
(129)

FILLI \triangle

020°
(110)

PALLI

NOTE: Chart not to scale.

DEPARTURE ROUTE DESCRIPTION

TAKEOFF RWY 3: Climb heading 031° to 560 MSL, then direct PALLI, then on depicted route to SWPFX, thence. . . .

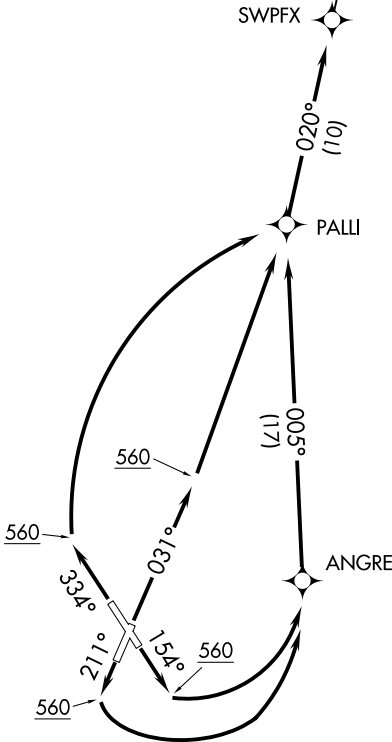
TAKEOFF RWY 15: Climb heading 154° to 560 MSL, then left turn direct ANGRE, then on depicted route to SWPFX, thence. . . .

TAKEOFF RWY 21: Climb heading 211° to 560 MSL, then left turn direct ANGRE, then on depicted route to SWPFX, thence. . . .

TAKEOFF RWY 33: Climb heading 334° to 560 MSL, then right turn direct PALLI, then on depicted route to SWPFX, thence. . . .

. . . . on assigned transition, maintain 4000.
Expect clearance to filed altitude 10 minutes
after departure.

FILLI TRANSITION (SWPFX2.FILLI):



560

560

560

560

334°

211°

154°

031°

560

560

560

560

560

005°
(117)

020°
(110)

560

560

560

560

560

560

560

560

560

560

SE-2, 07 OCT 2021 to 04 NOV 2021

SE-2, 07 OCT 2021 to 04 NOV 2021

SWPFX TWO DEPARTURE (RNAV)
(SWPFX2.SWPFX) 21JUL16

CHARLESTON, SOUTH CAROLINA
CHARLESTON AFB/INTL (CHS)