

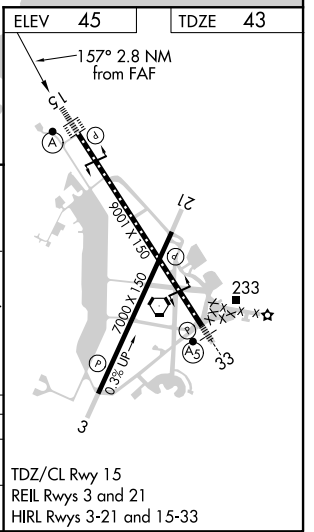
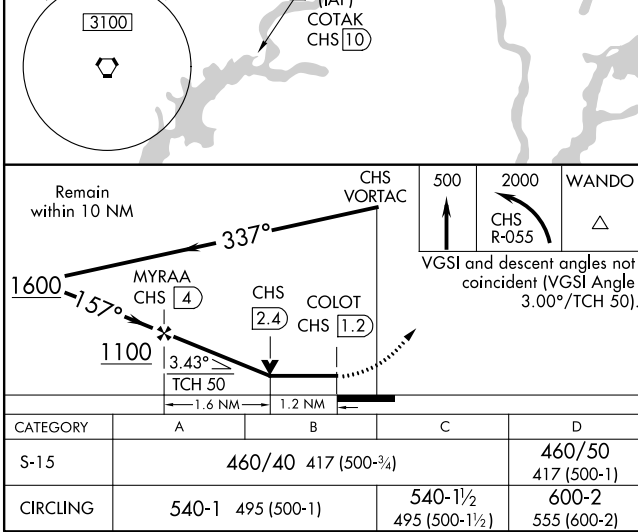
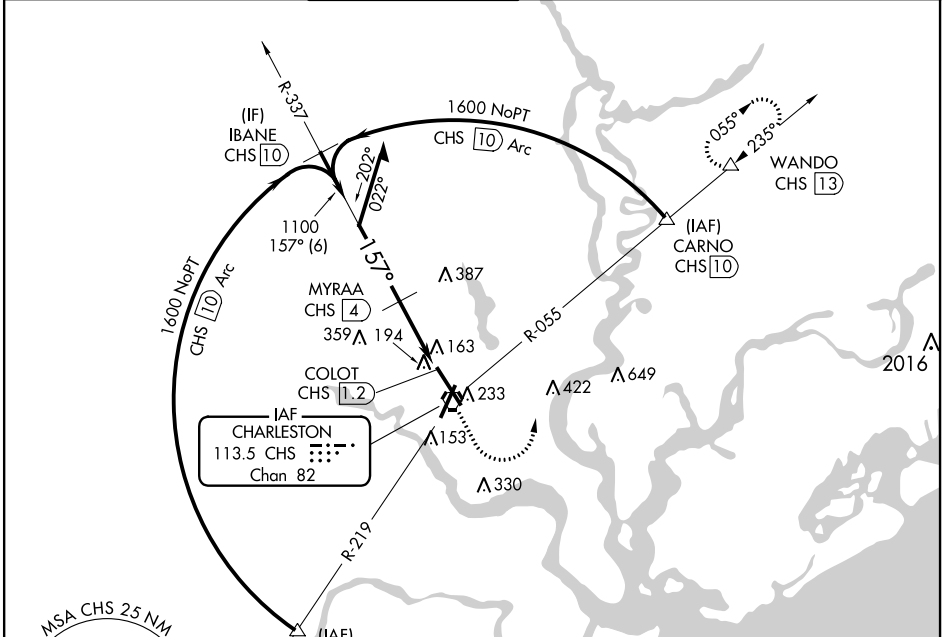
VORTAC CHS 113.5 Chan 82	APP CRS 157°	Rwy Idg TDZE 43 Apt Elev 45	9001
--	------------------------	---	-------------

VOR/DME or TACAN RWY 15

CHARLESTON AFB/INTL (CHS)

	For inoperative ALSF increase Cat A/B visibility to RVR 5000, Cat D visibility to RVR 6000.	MISSED APPROACH: Climb to 500 then climbing left turn to 2000 on CHS R-055 to WANDO/CHS 13 DME and hold.

ATIS 124.75	CHARLESTON APP CON 120.7 306.925	CHARLESTON TOWER 126.0 239.0	GND CON 121.9 348.6	CLNC DEL 127.325 291.65	CPDLC
-----------------------	--	--	-------------------------------	-----------------------------------	-------



SE-2, 07 OCT 2021 to 04 NOV 2021

SE-2, 07 OCT 2021 to 04 NOV 2021

TDZ/CL Rwy 15
REIL Rws 3 and 21
HIRL Rws 3-21 and 15-33