

EC-2, 07 OCT 2021 to 04 NOV 2021

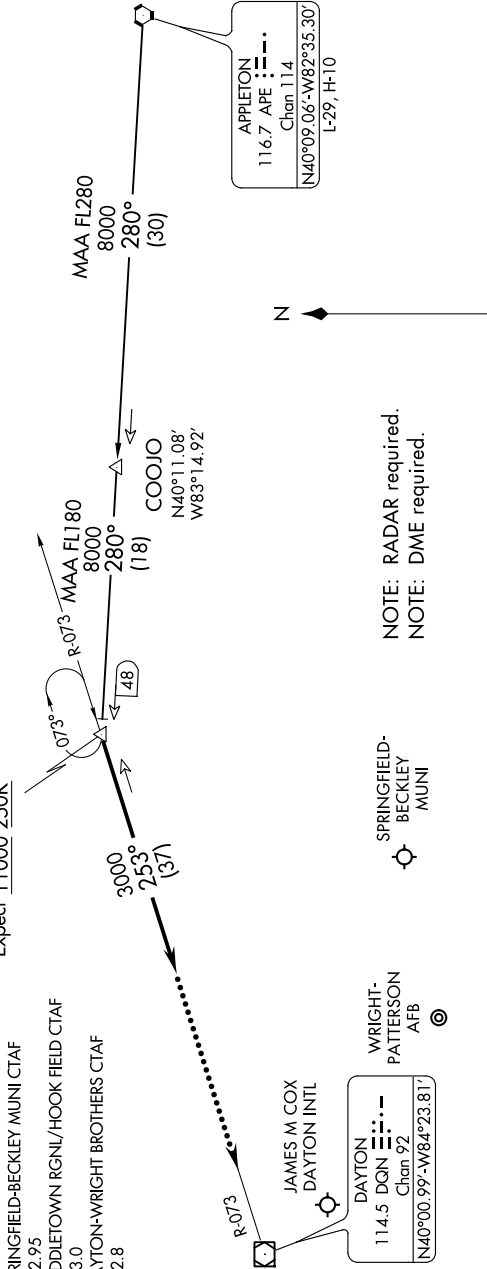
COLUMBUS APP CON
118.425 323.15
DAY ATIS
125.8
KFO ATIS
124.475 269.9
SPRINGFIELD-BECKLEY MUNI CTAF
122.95
MIDDLETOWN RGNL/HOOK FIELD CTAF
123.0
DAYTON-WRIGHT BROTHERS CTAF
122.8

DANEI

N40°12.16'-W83°38.36'

VERTICAL NAVIGATION PLANNING

Expect 11000 250K



NOTE: RADAR required.
NOTE: DME required.

SPRINGFIELD-BECKLEY MUNI

DAYTON
114.5 DQN
Chan 92
N40°00.99'-W84°23.81'

DAYTON-WRIGHT BROTHERS

MIDDLETOWN RGNL/HOOK FIELD

APPLETON TRANSITION (APE.DANEI3): From over APE VORTAC on APE R-280 to DANEI. Thence....

....From over DANEI on heading 253°. Expect RADAR vectors to final approach course.

LOST COMMUNICATIONS:

In the event of lost communications: At DANEI, proceed direct DQN VOR/DME maintain 3000' until DQN VOR/DME.

NOTE: Chart not to scale.

EC-2, 07 OCT 2021 to 04 NOV 2021