


|  |                        |                             |                                       |
|--|------------------------|-----------------------------|---------------------------------------|
| WAAS<br>CH <b>56501</b><br><b>W07A</b> | APP CRS<br><b>069°</b> | Rwy Idg<br>TDZE<br>Apt Elev | <b>8001</b><br><b>26</b><br><b>26</b> |
|--|------------------------|-----------------------------|---------------------------------------|

# RNAV (GPS) RWY 7

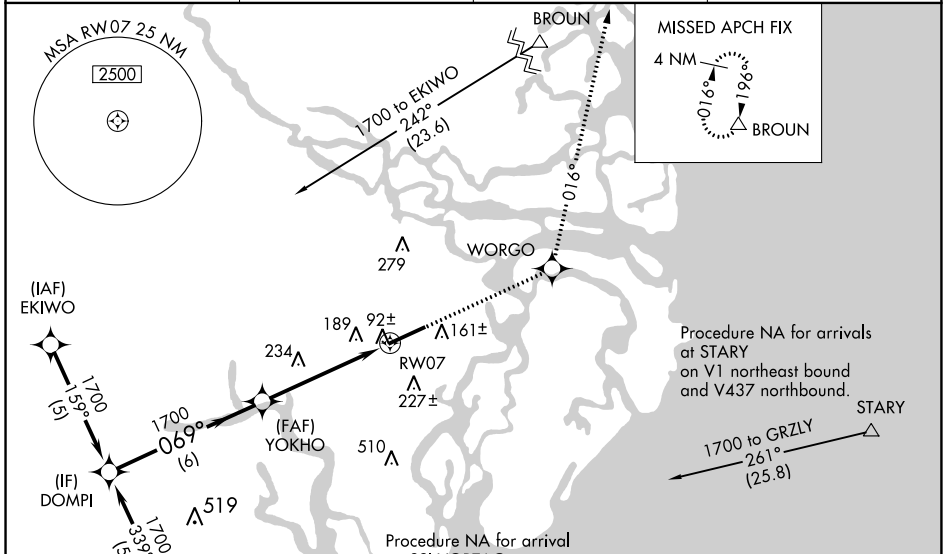
BRUNSWICK GOLDEN ISLES (BQK)

**RNP APCH.**

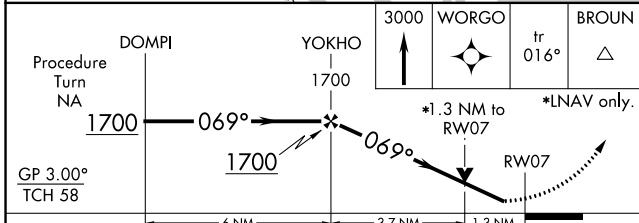
**⚠** For uncompensated Baro-VNAV systems, LNAV/VNAV NA below -15°C or above 48°C. VDP and Baro-VNAV NA when using St Simons Island altimeter setting. When local altimeter setting not received, use St Simons Island altimeter setting; increase LPV DA to 245 feet, LNAV/VNAV DA to 505 feet and LNAV/VNAV visibility 1/2 SM; increase all MDAs 20 feet. For inop ALS, increase LNAV Cat C/D visibility to 1 1/2 SM. For inop ALS when using St Simons Island altimeter setting, increase LNAV/VNAV all Cats and LNAV Cat C/D visibility to 1 3/4 SM.

**MALSR**  MISSED APPROACH: Climb to 3000 direct WORG0 and via track 016° to BROUN and hold.

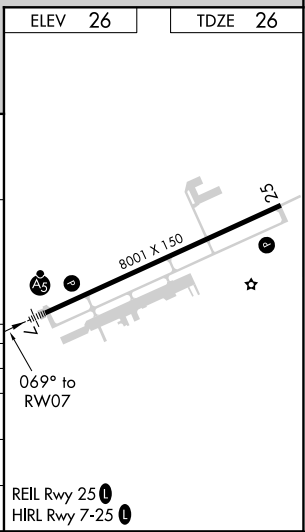
|                          |  |                                 |   |
|--------------------------|--|---------------------------------|---|
| AWOS-3<br><b>124.175</b> | JACKSONVILLE CENTER<br><b>126.75 277.4</b> | CLNC DEL<br><b>126.75 277.4</b> | UNICOM<br><b>123.0 (CTAF)</b>  |
|--------------------------|--|---------------------------------|---|



|         |         |
|---------|---------|
| ELEV 26 | TDZE 26 |
|---------|---------|



| CATEGORY     | A       | B             | C                            | D                            |
|--------------|---------|---------------|------------------------------|------------------------------|
| LPV DA       |         | 226-1/2       | 200 (200-1/2)                |                              |
| LNAV/VNAV DA |         | 486-7/8       | 460 (500-7/8)                |                              |
| LNAV MDA     | 500-1/2 | 474 (500-1/2) | 500-1                        | 474 (500-1)                  |
| CIRCLING     | 540-1   | 514 (600-1)   | 560-1 1/2<br>534 (600-1 1/2) | 800-2 1/2<br>774 (800-2 1/2) |



SE-4, 07 OCT 2021 to 04 NOV 2021

SE-4, 07 OCT 2021 to 04 NOV 2021