

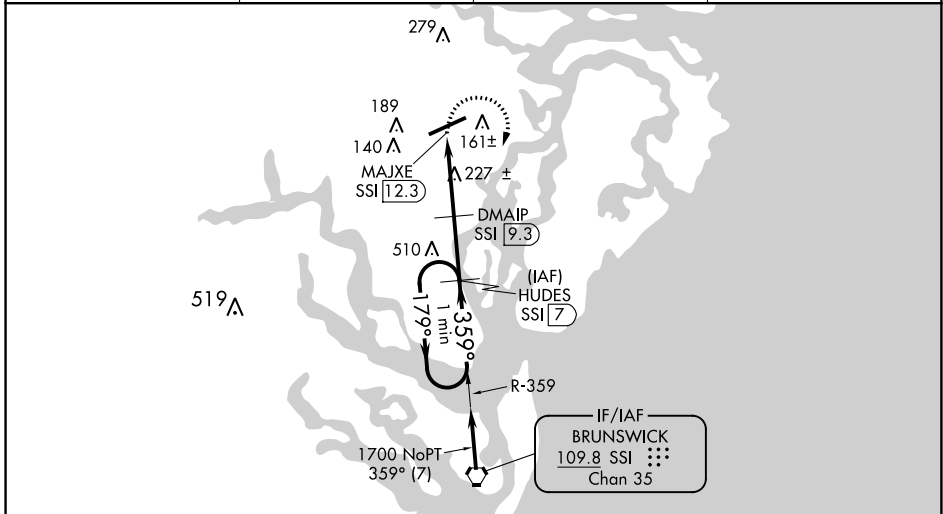
VORTAC SSI <b>109.8</b> Chan <b>35</b>	APP CRS <b>359°</b>	Rwy Idg TDZE Apt Elev	<b>N/A</b> <b>N/A</b> <b>26</b>
--	------------------------	-----------------------------	---------------------------------------

**VOR/DME-B**  
BRUNSWICK GOLDEN ISLES (BQK)

**⚠** When local altimeter setting not received, use St Simons Island altimeter setting and increase all MDA 20 feet.

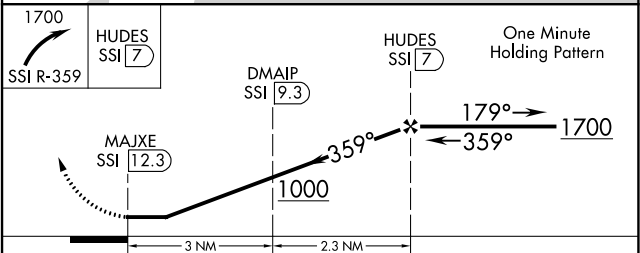
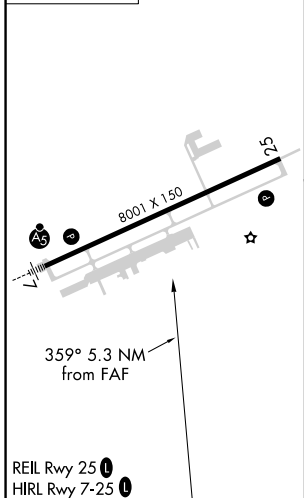
**MISSED APPROACH:** Climbing right turn to 1700 via SSI VORTAC R-359 to HUDES/7 DME and hold.

AWOS-3 <b>124.175</b>	JACKSONVILLE CENTER <b>126.75 277.4</b>	CLNC DEL <b>126.75 277.4</b>	UNICOM <b>123.0 (CTAF) 0</b>
--------------------------	--	---------------------------------	---------------------------------



Procedure NA for arrivals at SSI VORTAC via airway radials 302 CW 018.

ELEV 26



CATEGORY	A	B	C	D
CIRCLING	540-1	514 (600-1)	560-1½ 534 (600-1½)	800-2½ 774 (800-2½)

SE-4, 07 OCT 2021 to 04 NOV 2021

SE-4, 07 OCT 2021 to 04 NOV 2021