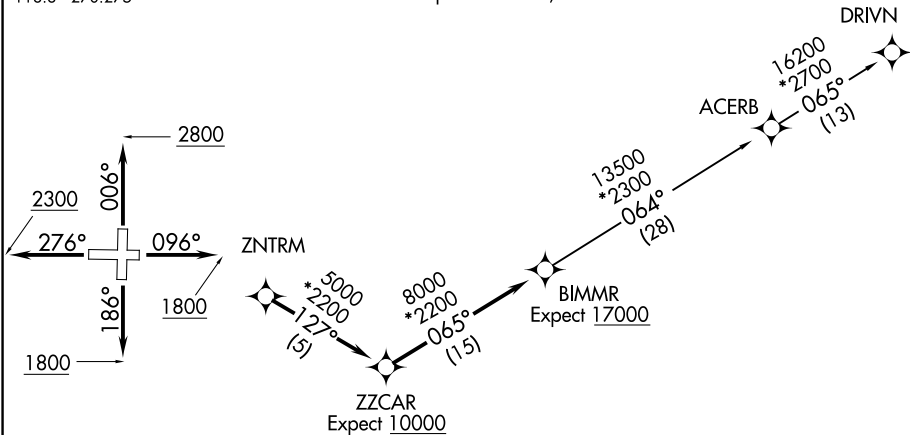


# BIMMR TWO DEPARTURE (RNAV)

**TOP ALTITUDE:  
3000**

ATIS ★  
127.075  
GND CON  
121.25  
GREENVILLE TOWER ★  
119.9 257.7  
UNICOM  
122.95  
GREER DEP CON ★  
118.8 270.275

NOTE: Do not exceed 250K until advised by ATC.  
NOTE: For turbojets only.  
NOTE: RNAV 1.  
NOTE: RADAR required.  
NOTE: DME/DME/IRU or GPS required.  
NOTE: If unable to accept climb rates, advise ATC on initial contact.



### TAKEOFF MINIMUMS

Rwy 1, 19: Standard.

Rwy 10: 300-1 or standard with minimum climb of 355' per NM to 1300.

Rwy 28: 300-2½ or standard with minimum climb of 220' per NM to 1500, or alternatively, with standard takeoff minimums and a normal 200' per NM climb gradient, takeoff must occur no later than 1900' prior to DER.

NOTE: Chart not to scale.

SE-2, 07 OCT 2021 to 04 NOV 2021

SE-2, 07 OCT 2021 to 04 NOV 2021



### DEPARTURE ROUTE DESCRIPTION

TAKEOFF ALL RUNWAYS: Climb on assigned heading for RADAR vectors to ZNTRM, then on depicted route to BIMMR, thence. . . .

. . . .on assigned transition. Maintain 3000. Expect clearance to filed altitude within 10 minutes after departure.

TAKEOFF RUNWAY 1: Climb heading 006° to 2800 before turning west or northwest.

TAKEOFF RUNWAY 10: Climb heading 096° to 1800 before turning west or northwest.

TAKEOFF RUNWAY 19: Climb heading 186° to 1800 before turning north.

TAKEOFF RUNWAY 28: Climb heading 276° to 2300 before turning north or northwest.

ACERB TRANSITION (BIMMR2.ACERB)

DRIVN TRANSITION (BIMMR2.DRIVN)

# BIMMR TWO DEPARTURE (RNAV)