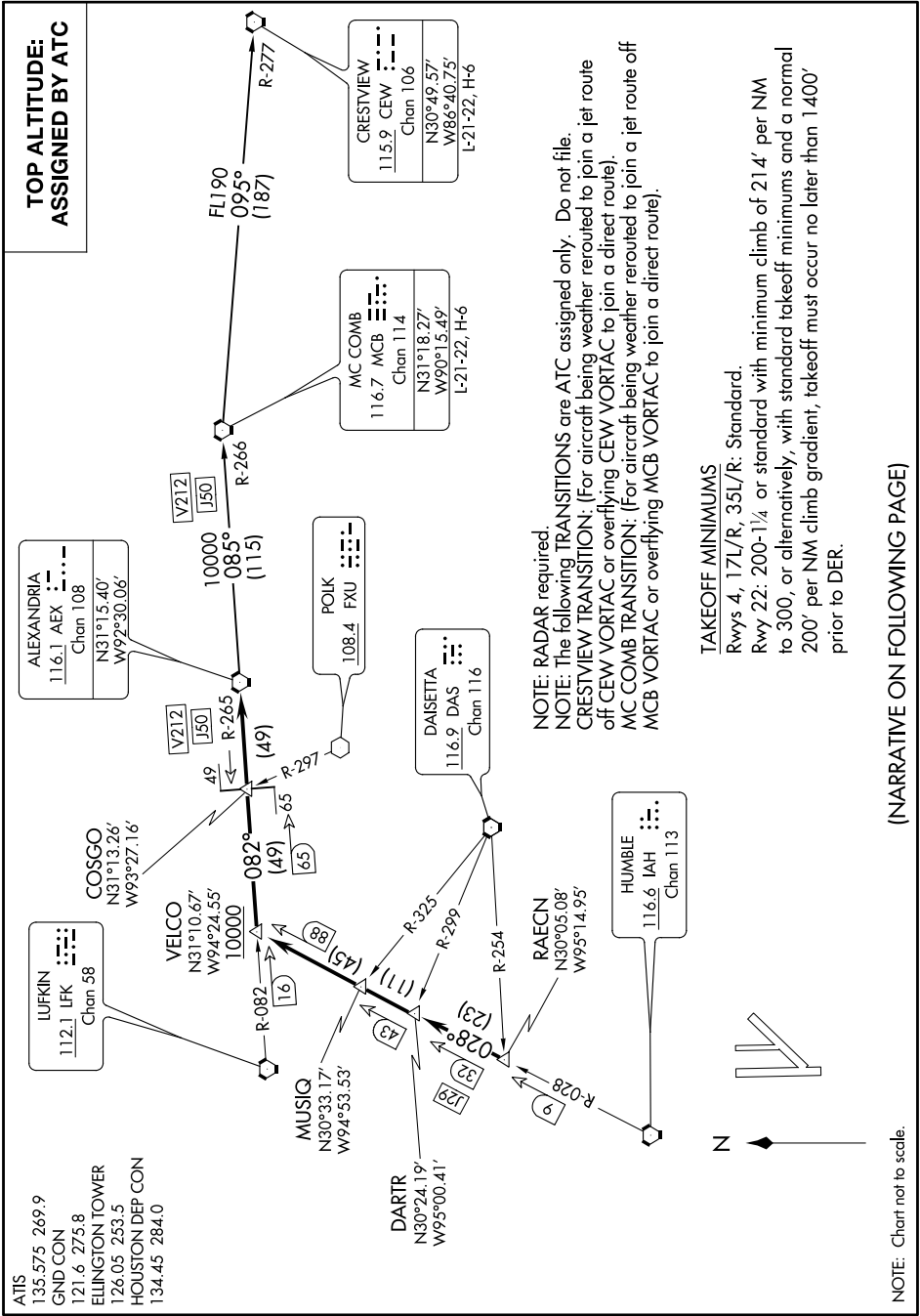


# ALEXANDRIA THREE DEPARTURE

SC-5, 07 OCT 2021 to 04 NOV 2021



**TOP ALTITUDE:  
ASSIGNED BY ATC**

ALEXANDRIA  
116.1 AEX  
Chan 108

N31°15.40'  
W92°30.06'

LUFKIN  
112.1 LFK  
Chan 58

COSGO  
N31°13.26'  
W93°27.16'

VELCO  
N31°10.67'  
W94°24.55'  
10000

MUSIQ  
N30°33.17'  
W94°53.53'

DART  
N30°24.19'  
W95°00.41'

DAISETTA  
116.9 DAS  
Chan 116

POIK  
108.4 FXU  
Chan 114

MC COMB  
116.7 MCB  
Chan 114

N31°18.27'  
W90°15.49'  
L-21-22, H-6

CRESTVIEW  
115.9 CEW  
Chan 106

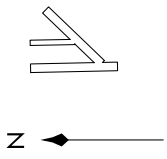
N30°49.57'  
W86°40.75'  
L-21-22, H-6

HUMBLE  
116.6 IAH  
Chan 113

NOTE: RADAR required.  
NOTE: The following TRANSITIONS are ATC assigned only. Do not file.  
CRESTVIEW TRANSITION: (For aircraft being weather rerouted to join a jet route off CEW VORTAC or overflying CEW VORTAC to join a direct route).  
MC COMB TRANSITION: (For aircraft being weather rerouted to join a jet route off MCB VORTAC or overflying MCB VORTAC to join a direct route).

### TAKEOFF MINIMUMS

Rwys 4, 17L/R, 35L/R: Standard.  
Rwy 22: 200-1¼ or standard with minimum climb of 214' per NM to 300, or alternatively, with standard takeoff minimums and a normal 200' per NM climb gradient, takeoff must occur no later than 1400' prior to DER.



NOTE: Chart not to scale.

(NARRATIVE ON FOLLOWING PAGE)

# ALEXANDRIA THREE DEPARTURE