

LOC I-EPD 111.1	APP CRS 354°	Rwy Idg TDZE Apt Elev 9001 28 33
---------------------------	------------------------	--

ILS Z or LOC Z RWY 35L

ELLINGTON (EFD)

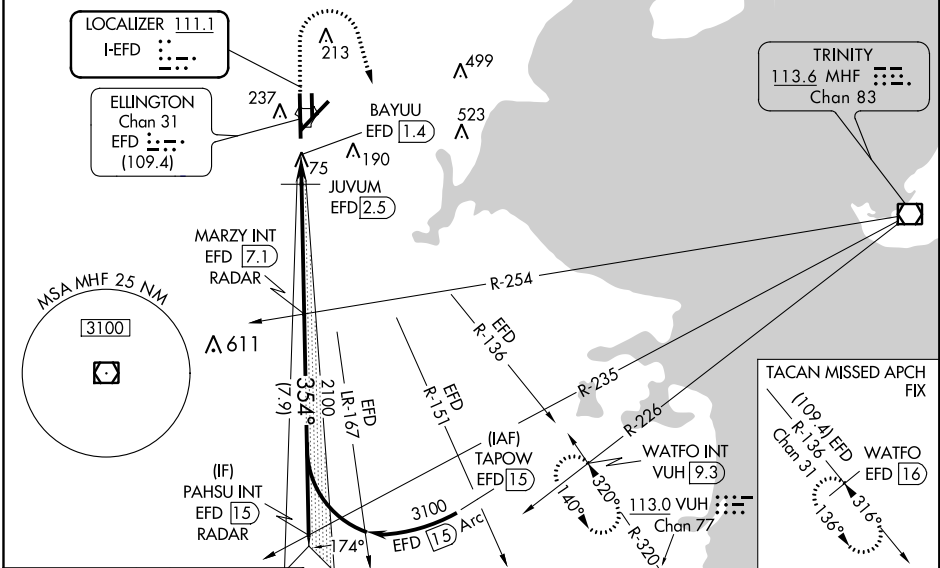
RADAR required for procedure entry.

⚠ Circling NA west of Rwy 17R-35L. DME from EFD TACAN. Simultaneous reception of I-EPD and EFD DME required. Inop table does not apply to S-ILS 35L. For inop ALS, increase S-LOC 35L Cat C/D/E visibility to 1 1/4 SM. For inop ALS when using JUVUM fix minimums, increase S-LOC 35L Cat C/D/E visibility to RVR 6000.

MALSF
⚠

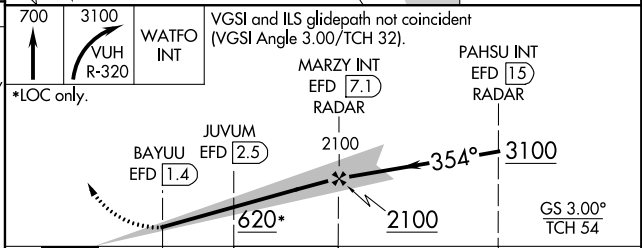
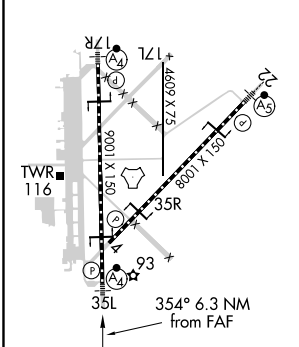
MISSED APPROACH: Climb to 700 then climbing right turn to 3100 on VUH VOR/DME R-320 to WATFO INT/VUH 9.3 DME and hold. (TACAN aircraft climb to 700 then climbing right turn to 3100 on EFD TACAN R-136 to WATFO/EFD 16 DME and hold southeast, left turn, 316° inbound).

ATIS 135.575 269.9	HOUSTON APP CON 134.45 284.0	ELLINGTON TOWER 126.05 253.5	GND CON 121.6 275.8
------------------------------	--	--	-------------------------------



ELEV 33	D TDZE 28
---------	------------------

HIRL Rwy 4-22 and 17R-35L TDZ/CL Rwy 17R, 22 and 35L



CATEGORY	A	B	C	D	E
S-ILS 35L	228/40 200 (200-3/4)				
S-LOC 35L	620/40	592 (600-3/4)	620-1 3/8		592 (600-1 3/8)
C CIRCLING	620-1	587 (600-1)	620-1 3/4	640-2	700-2 1/4
JUVUM FIX MINIMUMS (DME REQUIRED)					
S-LOC 35L	440/40	412 (500-3/4)	440/50		412 (500-1)
C CIRCLING	500-1	467 (500-1)	580-1 1/2	640-2	700-2 1/4

SC-5, 07 OCT 2021 to 04 NOV 2021

SC-5, 07 OCT 2021 to 04 NOV 2021