

WAAS CH <b>70625</b> <b>W17A</b>	APP CRS <b>174°</b>	Rwy Idg <b>9001</b> TDZE <b>32</b> Apt Elev <b>33</b>
--	------------------------	---

# RNAV (GPS) RWY 17R

ELLINGTON (EFD)

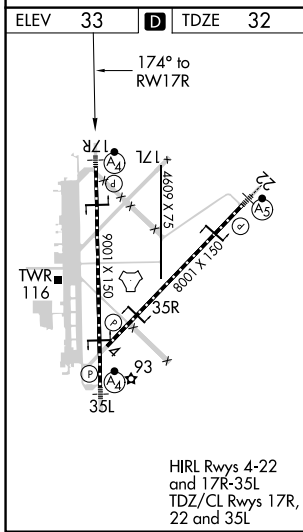
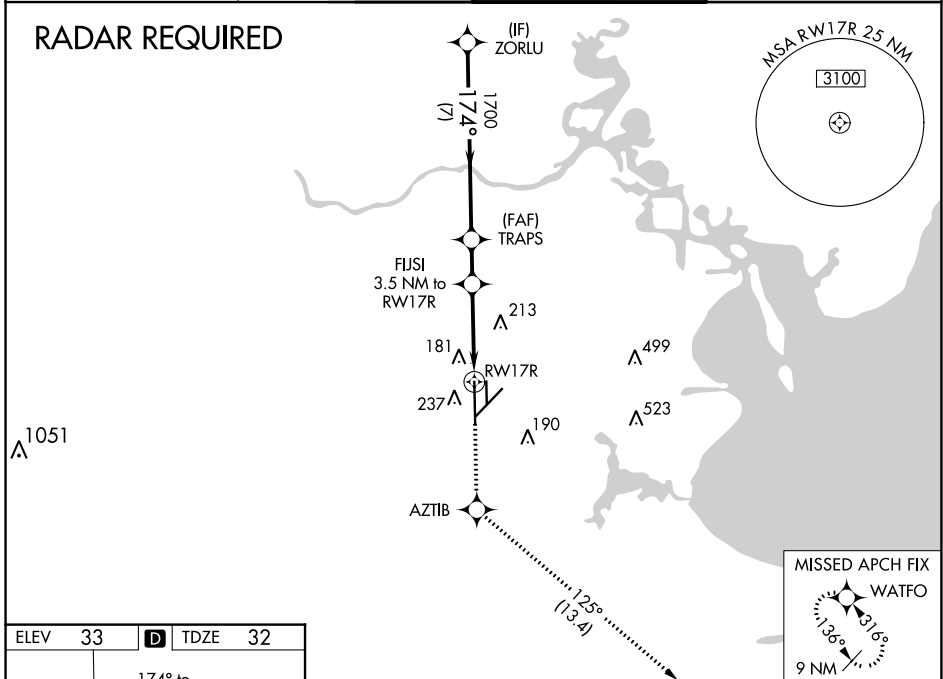
**⚠** For uncompensated Baro-VNAV systems, LNAV/VNAV NA below -15°C (5°F) or above 43°C (109°F). DME/DME RNP-0.3 NA. Inop table does not apply to LPV DA. For inop MALSF, increase LNAV/VNAV all Cats and LNAV Cats A and B visibility to RVR 5500 and Cats C/D/E visibility to 1½ miles. Circling NA west of Rwy 17R-35L.

MALSF

MISSED APPROACH: Climb to 3100 direct AZTIB and on track 125° to WATFO and hold.

ATIS <b>135.575 269.9</b>	HOUSTON APP CON <b>134.45 284.0</b>	ELLINGTON TOWER <b>126.05 253.5</b>	GND CON <b>121.6 275.8</b>
------------------------------	--	--	-------------------------------

## RADAR REQUIRED



VGSI and RNAV glidepath not coincident (VGSI Angle 3.00/TCH 48).	3100	AZTIB	fr 125°	WATFO	
ZORLU	2000	TRAPS	FUJSI	*LNAV only.	
GP 3.00° TCH 52	1700	1700	3.5 NM to RWY 17R		
	1700	*1180	*1.4 NM to RWY 17R		
	7 NM	1.6 NM	2.2 NM	1.4 NM	
CATEGORY	A	B	C	D	E
LPV DA		232/40	200 (200-¾)		
LNAV/VNAV DA		363/40	331 (400-¾)		
LNAV MDA	500/40	468 (500-¾)	500/60	468 (500-1¼)	
<input checked="" type="checkbox"/> CIRCLING	500-1	467 (500-1)	580-1½ 547 (600-1½)	640-2 607 (700-2)	700-2¼ 667 (700-2¼)

SC-5, 07 OCT 2021 to 04 NOV 2021

SC-5, 07 OCT 2021 to 04 NOV 2021