

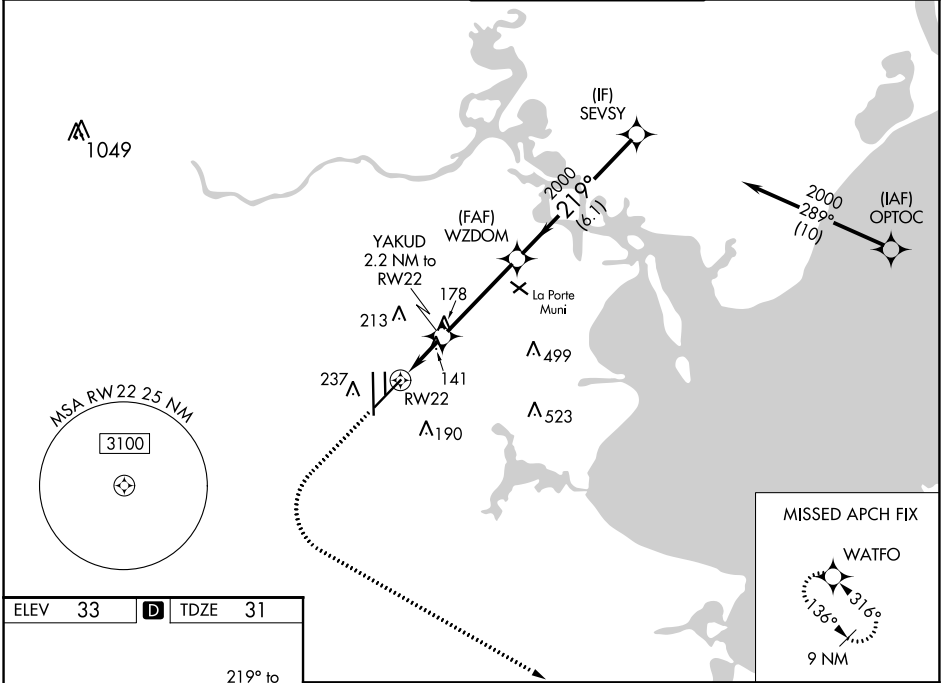
| | | |
|-------------------------|------------------------|------------------------|
| WAAS CH 61111 | APP CRS 219° | Rwy Idg 8001 |
| W22A | 219° | TDZE 31 |
| | | Apt Elev 33 |

RNAV (GPS) RWY 22

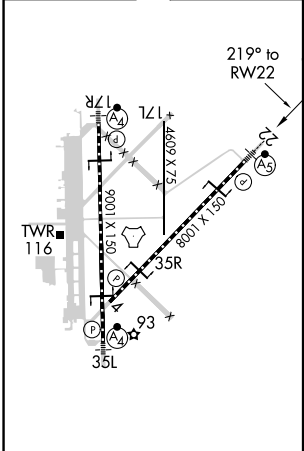
ELLINGTON (EFD)

| | | |
|---|-------|--|
| RNP APCH. | MALSR | MISSED APPROACH: Climb to 500 then climbing left turn to 3100 direct WATFO and hold. |
| <p>⚠ Circling NA west of Rwy 17R - 35L. For uncompensated Baro-VNAV systems, LNAV/VNAV NA below -15°C or above 54°C. For inop ALS, increase LPV Cat E visibility to RVR 4000, LNAV/VNAV all Cats visibility to RVR 4500, and LNAV Cats C/D/E visibility to RVR 5500.</p> | | |

| | | | |
|------------------------------|--|--|-------------------------------|
| ATIS 135.575 269.9 | HOUSTON APP CON 134.45 284.0 | ELLINGTON TOWER 126.05 253.5 | GND CON 121.6 275.8 |
|------------------------------|--|--|-------------------------------|



| | | |
|---------|----------|---------|
| ELEV 33 | D | TDZE 31 |
|---------|----------|---------|



| | | | | | |
|-------------------|-------------------|-------------------------|--|----------------------|------------------------------|
| 500 | 3100 | WATFO | VGSi and RNAV glidepath not coincident (VGSi Angle 3.00/TCH 50). | | |
| *LNAV only. | | YAKUD 2.2 NM to RW22 | WZDOM 2000 | SEVSY 2000 | GP 3.00° TCH 54 |
| *1 NM to RW22 | | 780* | 2000 | | |
| 1 NM | | 1.2 NM | 3.8 NM | 6.1 NM | |
| CATEGORY | A | B | C | D | E |
| LPV | DA | 231/18 | | 200 (200-1/2) | |
| LNAV/VNAV | DA | 341/24 | | 310 (400-1/2) | |
| LNAV | MDA | 400/24 | 369 (400-1/2) | 400/35 | 369 (400-5/8) |
| C CIRCLING | 500-1 467 (500-1) | | 580-1 1/2 547 (600-1 1/2) | 640-2 607 (700-2) | 700-2 1/4 667 (700-2 1/4) |

HIRL Rwy 4-22 and 17R-35L
TDZ/CL Rwy 17R, 22 and 35L

SC-5, 07 OCT 2021 to 04 NOV 2021

SC-5, 07 OCT 2021 to 04 NOV 2021