

TACAN EFD Chan <b>31</b> (109.4)	APP CRS <b>226°</b>	Rwy Idg <b>8001</b> TDZE <b>31</b> Apt Elev <b>33</b>
--	------------------------	---

# TACAN RWY 22

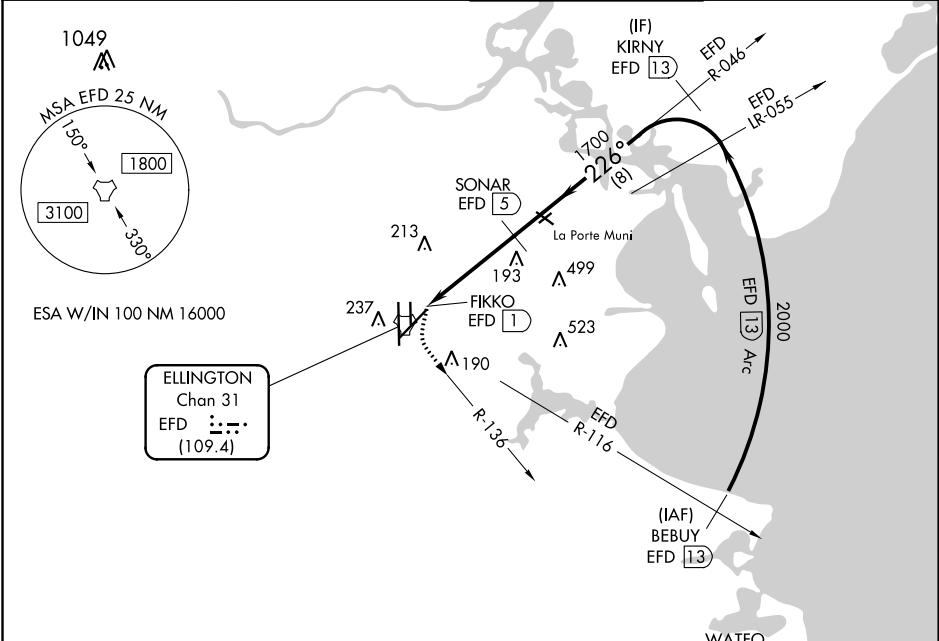
ELLINGTON (EFD)

**∇** Circling NA west of Rwy 17R-35L. When ALS inop, increase S-22  
**△** NA Cat A/B visibility to RVR 5500 and Cat C/D/E to 1 3/8 miles.



MISSED APPROACH: Climbing left turn to 3100 on EFD TACAN R-136 to WATFO/EFD 16 DME and hold.

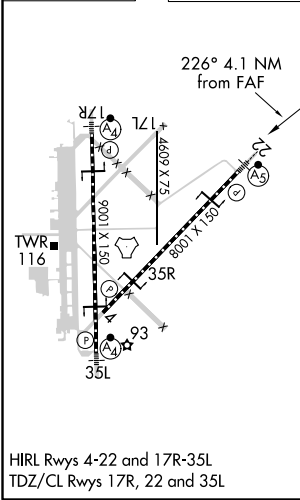
ATIS <b>135.575 269.9</b>	HOUSTON APP CON <b>134.45 284.0</b>	ELLINGTON TOWER <b>126.05 253.5</b>	GND CON <b>121.6 275.8</b>
------------------------------	--	--	-------------------------------



SC-5, 07 OCT 2021 to 04 NOV 2021

SC-5, 07 OCT 2021 to 04 NOV 2021

ELEV 33	<b>D</b>	TDZE 31
---------	----------	---------



## RADAR REQUIRED

3100 EFD R-136 WATFO EFD 16 VGSI and descent angles not coincident (VGSI Angle 3.00/TCH 50).  
 Cat D/E VDA not for civil use.

KIRNY EFD 13

SONAR EFD 5

FIKKO EFD 1

EFD 2.2

1700

226°

2000

3.69° TCH 55

0.2 1.2 2.7 NM 8 NM

CATEGORY	A	B	C	D	E
S-22	500/24	469 (500-1/2)	500/50	469 (500-1)	
<b>C</b> CIRCLING	500-1	467 (500-1)	580-1 1/2 547 (600-1 1/2)	640-2 607 (700-2)	700-2 1/4 667 (700-2 1/4)

HOUSTON, TEXAS  
 HIRL Rwy 4-22 and 17R-35L  
 TDZ/CL Rwy 17R, 22 and 35L  
 Orig-C 08OCT20

29°36'N-95°10'W

# ELLINGTON (EFD) TACAN RWY 22