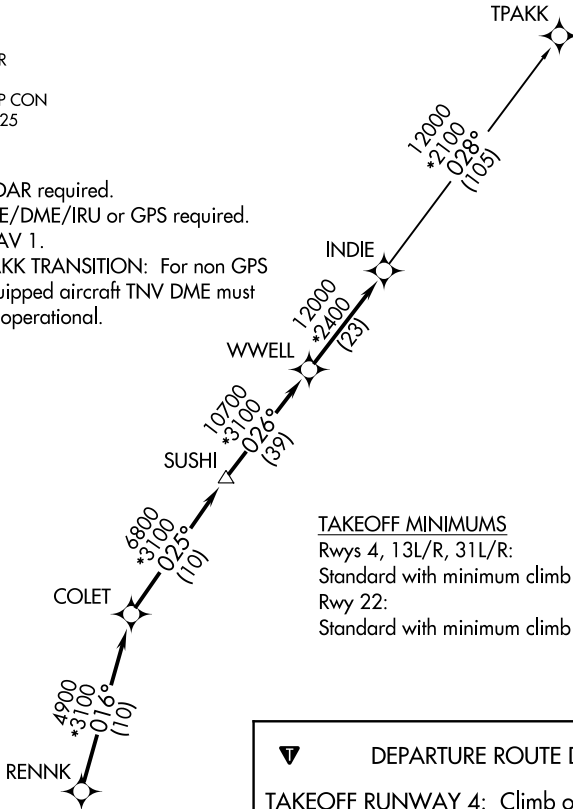


INDIE EIGHT DEPARTURE (RNAV)

**TOP ALTITUDE:
16000**

D-ATIS 124.6
CLNC DEL
125.45
CPDLC
GND CON
121.9
HOBBY TOWER
118.7 256.9
HOUSTON DEP CON
132.25 285.425

NOTE: RADAR required.
NOTE: DME/DME/IRU or GPS required.
NOTE: RNAV 1.
NOTE: TPAKK TRANSITION: For non GPS
equipped aircraft TNV DME must
be operational.



TAKEOFF MINIMUMS

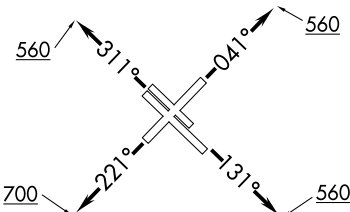
Rwys 4, 13L/R, 31L/R:
Standard with minimum climb of 500' per NM to 560.
Rwy 22:
Standard with minimum climb of 500' per NM to 700.

DEPARTURE ROUTE DESCRIPTION

TAKEOFF RUNWAY 4: Climb on heading 041° to 560 for RADAR vectors to RENNK, thence
TAKEOFF RUNWAYS 13L/R: Climb on heading 131° to 560 for RADAR vectors to RENNK, thence
TAKEOFF RUNWAY 22: Climb on heading 221° to 700 for RADAR vectors to RENNK, thence
TAKEOFF RUNWAYS 31L/R: Climb on heading 311° to 560 for RADAR vectors to RENNK, thence

. . . . on track 016° to COLET, then on track 025° to SUSHI, then on track 026° to WWELL, then on track 026° to INDIE, then on (transition). Maintain 16000 or as assigned by ATC. Expect filed altitude 10 minutes after departure.

TPAKK TRANSITION (INDIE8.TPAKK)



NOTE: Chart not to scale.

INDIE EIGHT DEPARTURE (RNAV)

(INDIE8.INDIE) 07OCT21