

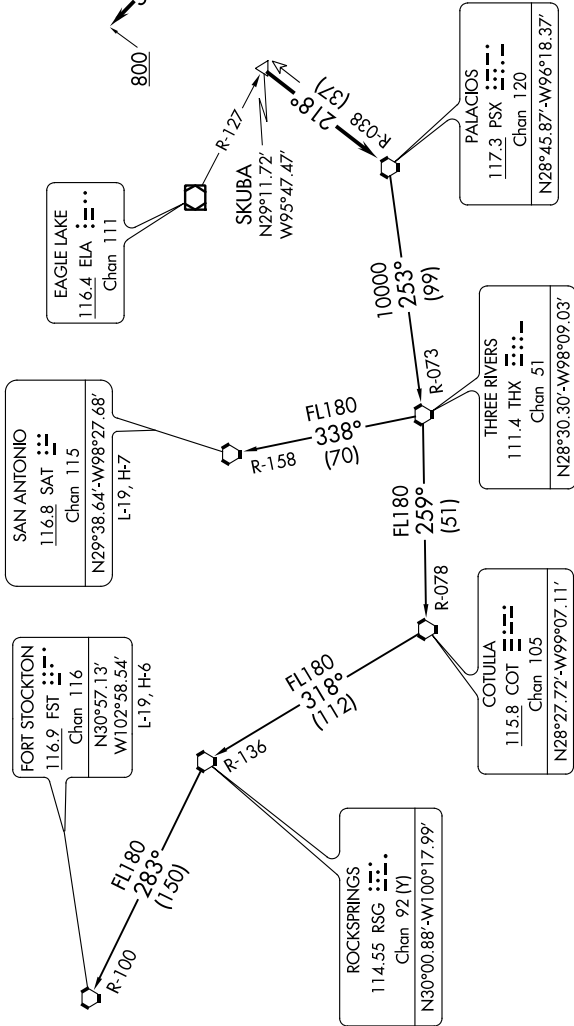
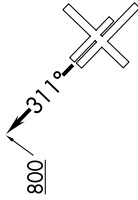
SC-5, 07 OCT 2021 to 04 NOV 2021

D-ATIS
124.6
CINC DEL
125.45
CPDLC
GND CON
121.9
HOBBY TOWER
118.7 256.9
HOUSTON DEP CON
127.125 269.075

TAKEOFF MINIMUMS

Rwys 4, 13L/R, 31L/R: Standard.
Rwy 22: Standard with minimum climb
of 290' per NM to 1500.

TOP ALTITUDE:
16000



NOTE: RADAR required.
NOTE: Chart not to scale.

(NARRATIVE ON FOLLOWING PAGE)

SC-5, 07 OCT 2021 to 04 NOV 2021