

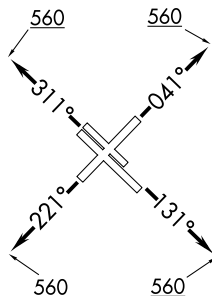
PTRON SEVEN DEPARTURE (RNAV)

D-ATIS
124.6
CLNC DEL
125.45
CPDLC
GND CON
121.9
HOBBY TOWER
118.7 256.9
HOUSTON DEP CON
127.125 269.075

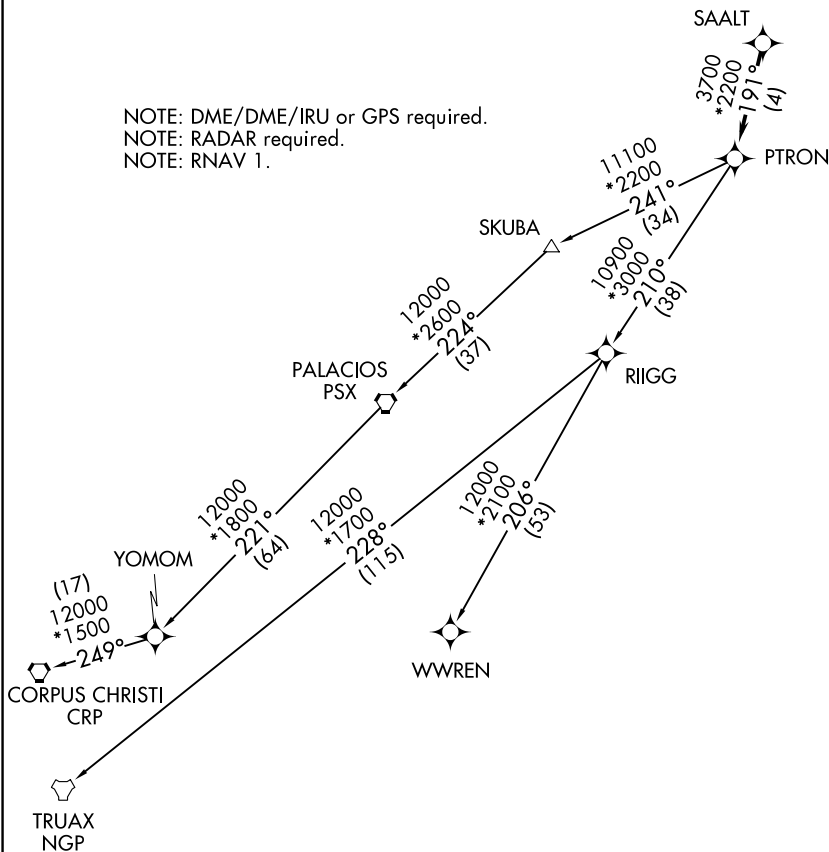
**TOP ALTITUDE:
16000**

TAKEOFF MINIMUMS

Rwy 4: Standard with minimum climb of 500' per NM to 900.
Rwy 13L: Standard with minimum climb of 500' per NM to 3600.
Rwy 13R: Standard with minimum climb of 500' per NM to 3800.
Rwy 22: Standard with minimum climb of 500' per NM to 1900.
Rwys 31L/R: Standard with minimum climb of 500' per NM to 560.



NOTE: DME/DME/IRU or GPS required.
NOTE: RADAR required.
NOTE: RNAV 1.



NOTE: Chart not to scale.

(NARRATIVE ON FOLLOWING PAGE)

PTRON SEVEN DEPARTURE (RNAV)

SC-5, 07 OCT 2021 to 04 NOV 2021

SC-5, 07 OCT 2021 to 04 NOV 2021