

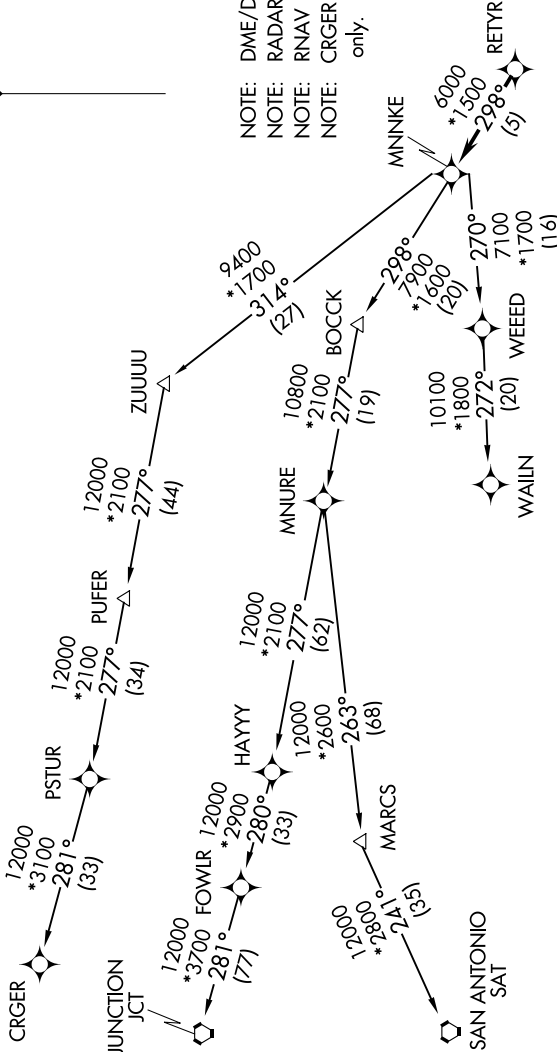
# RETYR SIX DEPARTURE (RNAV)

D-ATIS  
124.6  
CLNC DEL  
125.45  
CPDIC  
GND CON  
121.9  
HOBBY TOWER  
118.7 256.9  
HOUSTON DEP CON  
126.675 339.8

NOTE: DME/DME/IRU or GPS required.  
NOTE: RADAR required.  
NOTE: RNAV 1.  
NOTE: CRGR TRANSITION ATC assigned only.



**TOP ALTITUDE:  
16000**



### TAKEOFF MINIMUMS

Rwys 4, 13L/R, 31L/R:  
Standard with minimum climb of 500' per NM to 560.  
Rwy 22: Standard with minimum climb of 500' per NM to 800.

NOTE: Chart not to scale.

(NARRATIVE ON FOLLOWING PAGE)