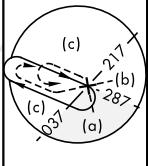


# HI-ILS or LOC RWY 23R

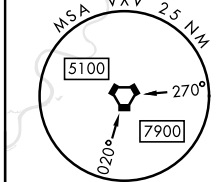
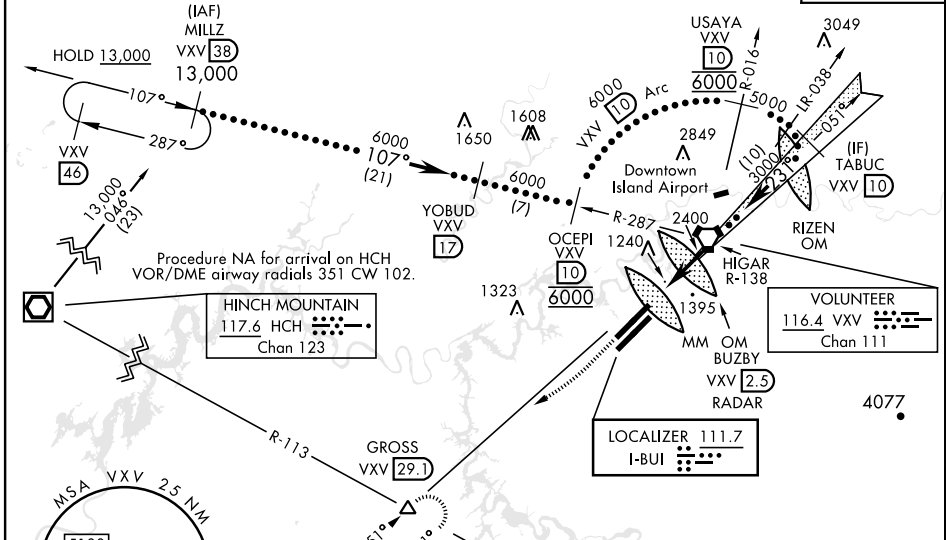
LOC I-BUI <b>111.7</b>	APCH CRS <b>231°</b>	Rwy ldg TDZE Arprt Elev <b>9495</b> <b>984</b> <b>986</b>	AL-218 [USAF]	KNOXVILLE/ McGHEE TYSON (KTYS)
DME required.		ALSF-2	MISSED APPROACH: Climb to 2000 then dimbing right turn to 4000 on heading 240° and VXV VORTAC R-231 to GROSS/VXV 29.1 DME and hold.	

ATIS <b>128.35</b>	KNOXVILLE APP CON <b>123.9 360.8</b>	KNOXVILLE TOWER <b>121.2 257.8</b>	GND CON <b>121.9 348.6</b>	CLNC DEL <b>121.65</b>	ASR
-----------------------	---	---------------------------------------	-------------------------------	---------------------------	-----

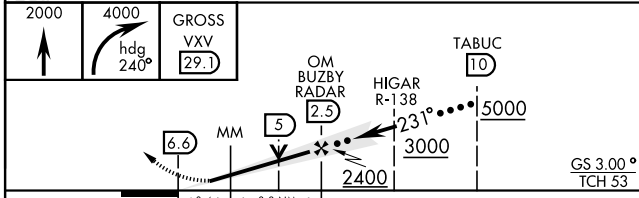
RVR 1800 authorized with use of FD or AP or HUD to DA (NA when using altimeter setting).



CAUTION: RIZEN OM for Downtown Island for Rwy 26 may be received prior to BUZBY OM.



EMERG SAFE ALT 100 NM 8900



ELEV 986	TDZE 984
Rwy 23L ldg 8600'	231° 4.2 NM from FAF
Rwy 05L ldg 9510'	
Rwy 23R ldg 9495'	
HIRL Rwy 5R-23L, 5L-23R	1014
REIL Rwy 5R-23L	
TDZL/CL Rwy 5R	

CATEGORY	C	D	E
S-ILS 23R *	1184/1800	200	(200-½)
S-LOC 23R **	1560-1¼	576	(600-1¼)
CIRCLING	1660-2 674 (700-2)	1900-3	914 (1000-3)

# HI-ILS or LOC RWY 23R

SE-1, 07 OCT 2021 to 04 NOV 2021

SE-1, 07 OCT 2021 to 04 NOV 2021