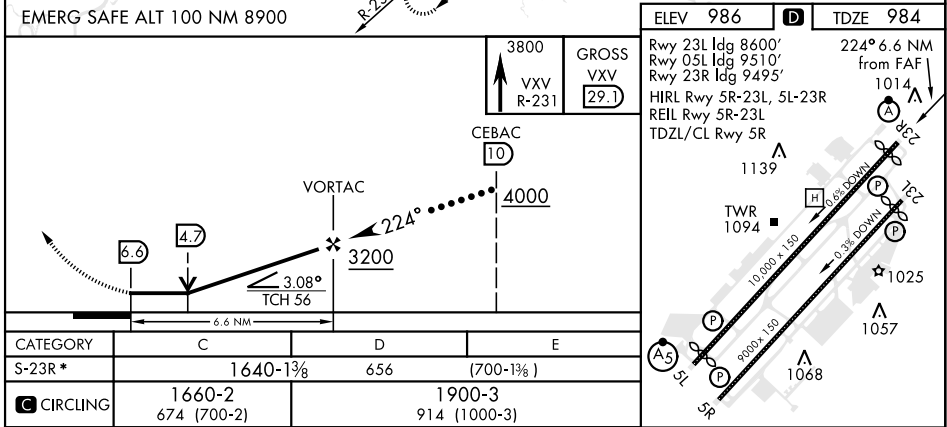
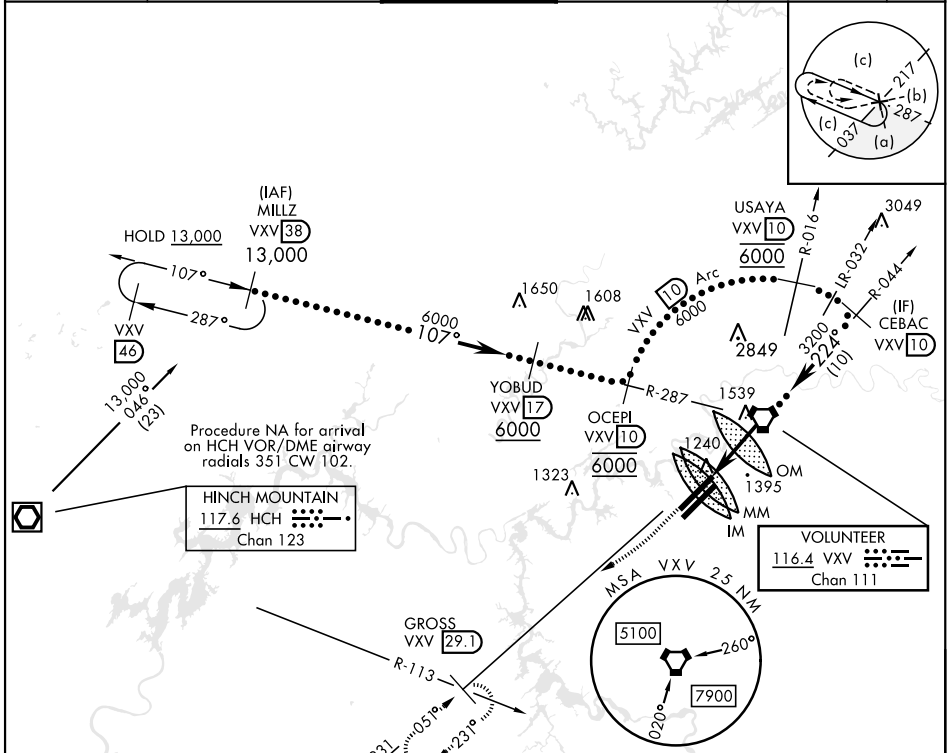


HI-VOR or TACAN RWY 23R

VORTAC VXV 116.4 Chan 111	APCH CRS 224°	Rwy ldg TDZE Arprt Elev 9495 984 986	AL-218 [USAF]	KNOXVILLE/ McGHEE TYSON (KTYS)	
DME required.		ALSIF-2	MISSED APPROACH: Climb to 3800 direct on VXV VORTAC R-231 to GROSS/29.1 DME and hold.		
* When ALS inop, increase vis to 1½ miles.					
ATIS 128.35	KNOXVILLE APP CON 123.9 360.8	KNOXVILLE TOWER 121.2 257.8	GND CON 121.9 348.6	CLNC DEL 121.65	ASR



HI-VOR or TACAN RWY 23R

SE-1, 07 OCT 2021 to 04 NOV 2021

SE-1, 07 OCT 2021 to 04 NOV 2021