

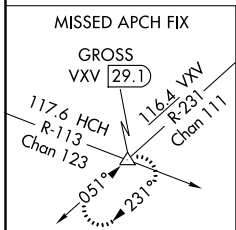
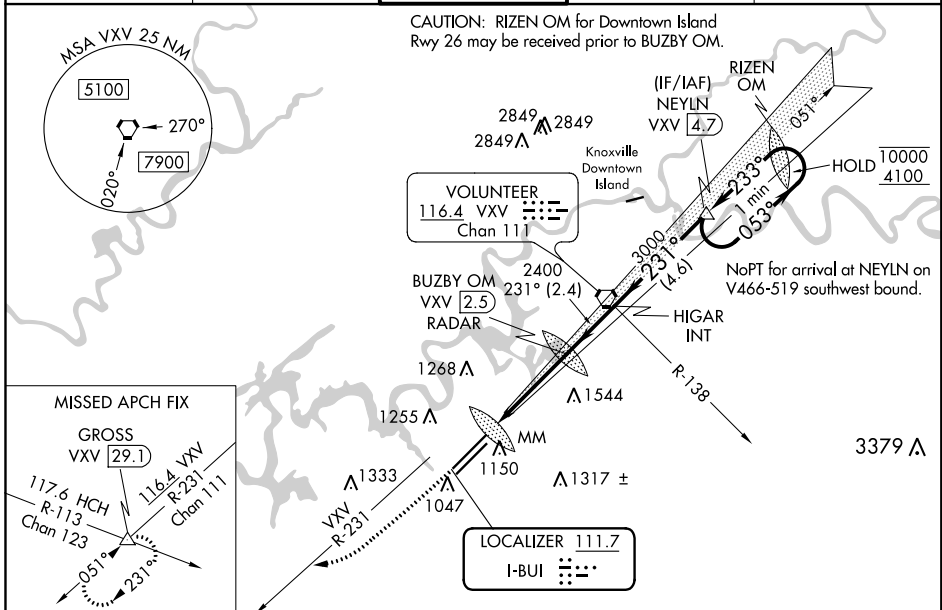
LOC I-BUI 111.7	APP CRS 231°	Rwy Idg TDZE Apt Elev	9495 984 986
---------------------------	------------------------	-----------------------------	---

ILS or LOC RWY 23R

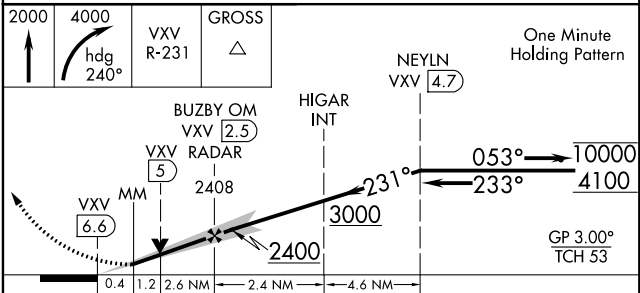
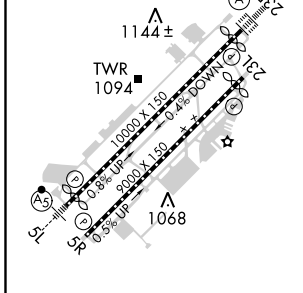
MC GHEE TYSON (T'YS)

DME or RADAR required.		ALSF-2	MISSED APPROACH: Climb to 2000 then climbing right turn to 4000 on heading 240° and VXV VORTAC R-231 to GROSS INT/VXV 29.1 DME and hold.
For inop ALS, increase S-LOC Cat C/D/E visibility to 1 1/2 SM.			

ATIS 128.35	KNOXVILLE APP CON 123.9 360.8	KNOXVILLE TOWER 121.2 257.8	GND CON 121.9 348.6	CLNC DEL 121.65
-----------------------	---	---------------------------------------	-------------------------------	---------------------------



ELEV 986	D TDZE 984
231° 4.2 NM from FAF	



CATEGORY	A	B	C	D	E
S-ILS 23R	1184/18 200 (200-1/2)				
S-LOC 23R	1560/24	576 (600-1/2)	1560-1/4	576 (600-1/4)	
CIRCLING	1560-1	574 (600-1)	1660-2 674 (700-2)	1900-3	914 (1000-3)

SE-1, 07 OCT 2021 to 04 NOV 2021

SE-1, 07 OCT 2021 to 04 NOV 2021