

# RNAV (GPS) RWY 2

LAS VEGAS MUNI (LVS)

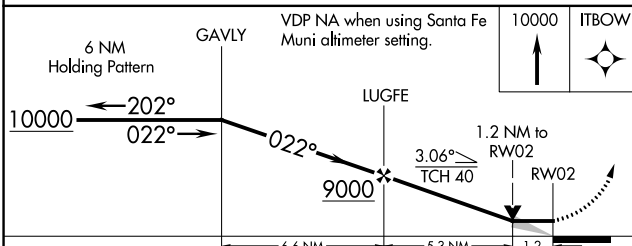
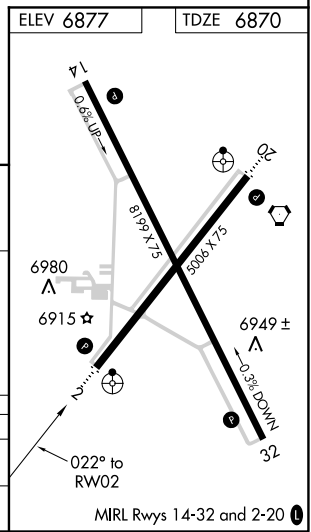
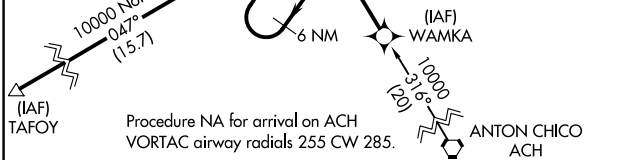
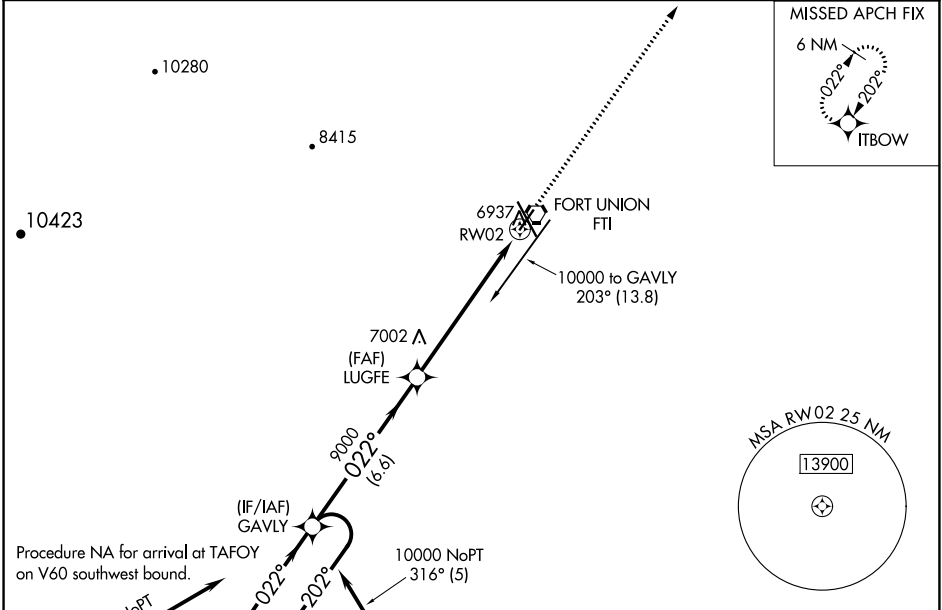
APP CRS <b>022°</b>	Rwy Idg <b>5006</b>
	TDZE <b>6870</b>
	Apt Elev <b>6877</b>

RNP APCH-GPS.

**▽** Inop table does not apply to Cat C. When local altimeter not received, use Santa Fe Muni altimeter setting and increase all MDAs 200 feet; increase LNAV Cat C visibility to 1 3/4 SM and Circling Cat C visibility to 2 1/4 SM.

**▲** MISSED APPROACH: Climb to 10000 direct ITBOW and hold.

ASOS <b>118.525</b>	ALBUQUERQUE CENTER <b>132.8 346.35</b>	UNICOM <b>122.8 (CTAF) 0</b>
------------------------	---	---------------------------------



CATEGORY	A	B	C	D
LNAV MDA	7280-3/4	410 (500-3/4)	7280-1 1/4 410 (500-1 1/4)	NA
CIRCLING	7420-1	543 (600-1)	7420-1 1/2 543 (600-1 1/2)	NA

SW-1, 07 OCT 2021 to 04 NOV 2021

SW-1, 07 OCT 2021 to 04 NOV 2021