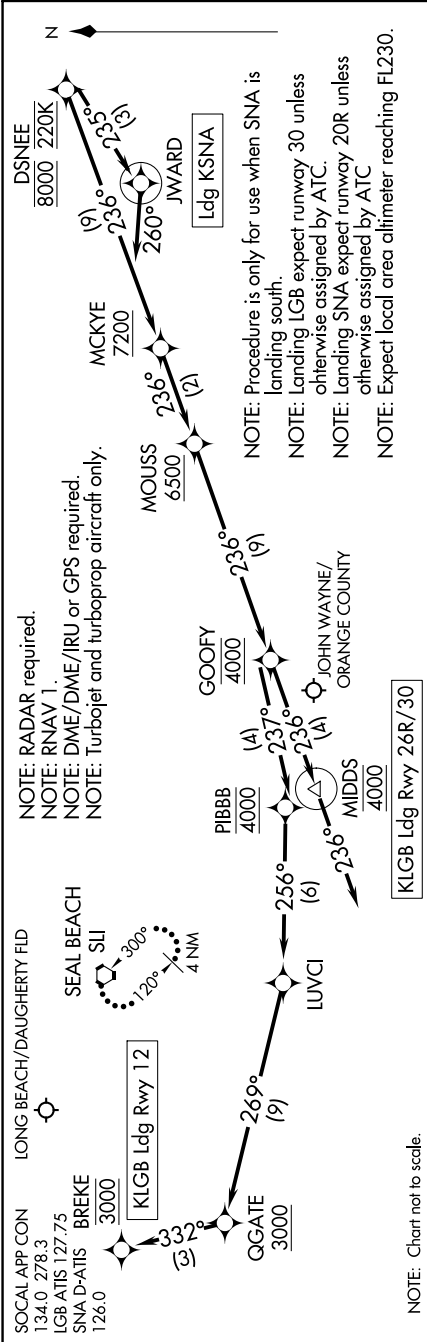


1200 2020 04 1:20Z ITCO 70 'E-W5



ARRIVAL ROUTE DESCRIPTION

**LANDING KLGB RUNWAY 12:** From DSNEE on track 236° to cross MCKYE at or above 7200, then on track 236° to cross MOUSS at or above 6500, then on track 236° to cross GOOFOY at 4000, then on track 237° to cross PIBBB at 4000, then on track 256° to LUVC1, then on track 269° to cross QGATE at or above 3000, then on track 332° to cross BREKE at 3000. Expect RNAV (RNP) RWY 12 approach.

**LANDING KLGB RUNWAYS 26R, 30:** From DSNEE on track 236° to cross MCKYE at or above 7200, then on track 236° to cross MOUSS at or above 6500, then on track 236° to cross GOOFOY at 4000, then on track 236° to cross MCKYE at 4000, then on track 236° to cross track 236° Expect ILS or RNAV (RNP) RWY 30 approach, or RNAV (RNP) RWY 26R approach.

**LANDING KSNA:** From DSNEE on track 235° to cross JWARD, then on heading 260° or as assigned by ATC. Expect vectors to ILS or RNAV (RNP) RWY 20R final approach course.

**LOST COMMUNICATIONS:** In the event of lost communications:  
**LANDING LGB RUNWAYS 26R, 30:** After MIDDS proceed on the RNAV (RNP) RWY 30 or ILS RWY 30 approach.  
**LANDING LGB RUNWAY 12:** After BREKE proceed on the RNAV (RNP) RWY 12 approach, if unable approach, after MIDDS/BREKE climb to 4000 direct SLI VORTAC and hold.  
**LANDING SNA RUNWAY 20R:** After DSNEE proceed on the RNAV (RNP) RWY 20R approach. If unable approach, after DSNEE maintain 6000 direct SLI VORTAC and hold.

SW-3, 07 OCT 2021 to 04 NOV 2021