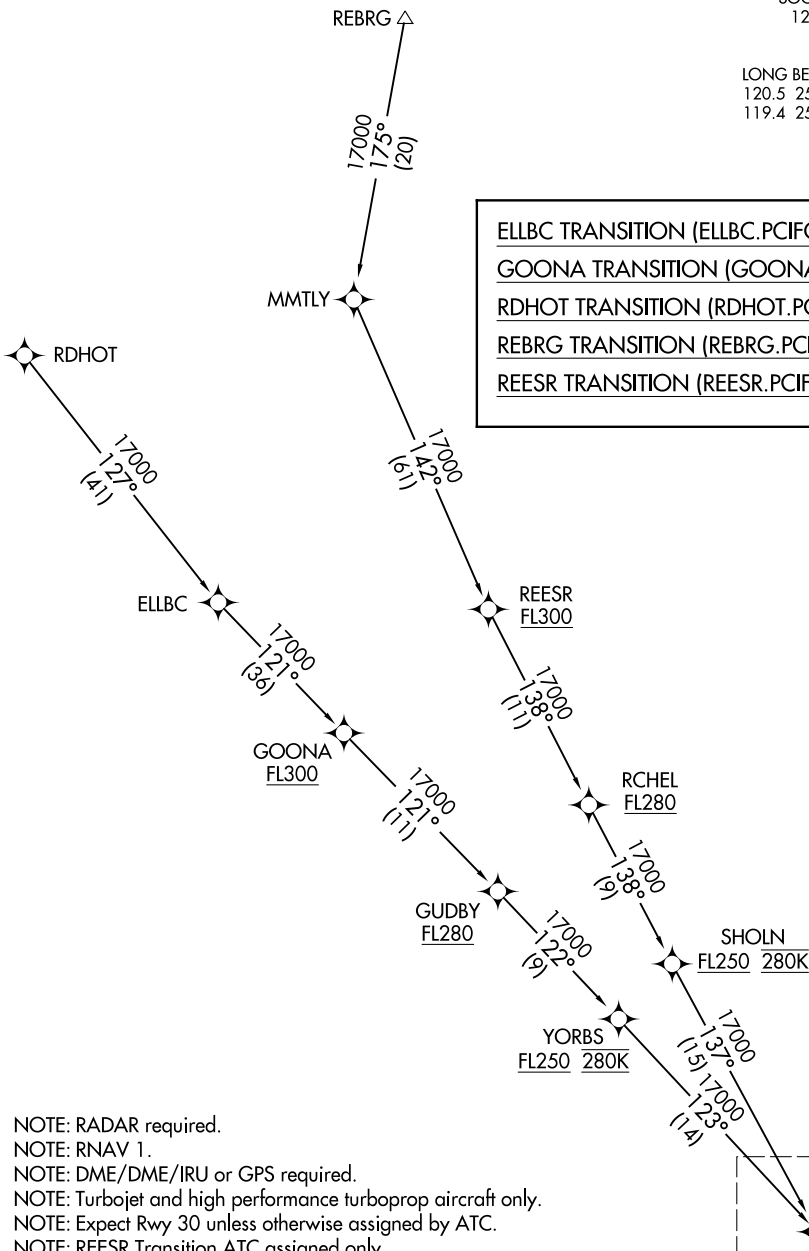


# PCIFC TWO ARRIVAL (RNAV) Transition Routes

LONG BEACH (DAUGHERTY FLD) (LGB)  
LONG BEACH, CALIFORNIA

SOCAL APP CON  
127.4 263.025  
ATIS  
127.75  
LONG BEACH TOWER\*  
120.5 257.6 (Rwy 12)  
119.4 257.6 (Rwy 30)

- ELLBC TRANSITION (ELLBC.PCIFC2)
- GOONA TRANSITION (GOONA.PCIFC2)
- RDHOT TRANSITION (RDHOT.PCIFC2)
- REBRG TRANSITION (REBRG.PCIFC2)
- REESR TRANSITION (REESR.PCIFC2)



SW-3, 07 OCT 2021 to 04 NOV 2021

SW-3, 07 OCT 2021 to 04 NOV 2021

- NOTE: RADAR required.
- NOTE: RNAV 1.
- NOTE: DME/DME/IRU or GPS required.
- NOTE: Turbojet and high performance turboprop aircraft only.
- NOTE: Expect Rwy 30 unless otherwise assigned by ATC.
- NOTE: REESR Transition ATC assigned only.

(CONTINUED ON FOLLOWING PAGE)

NOTE: Chart not to scale.

See following page for Arrival Routes.

# PCIFC TWO ARRIVAL (RNAV) Transition Routes

LONG BEACH, CALIFORNIA  
LONG BEACH (DAUGHERTY FLD) (LGB)