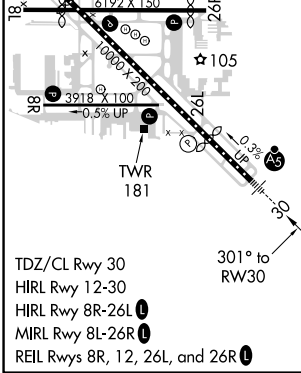
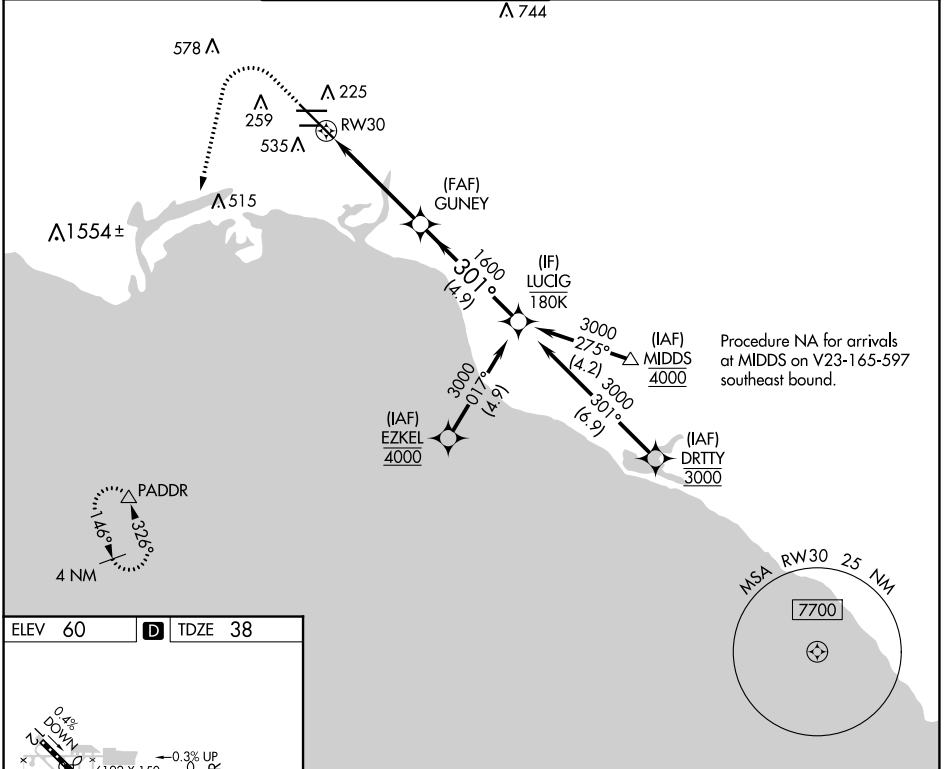


APP CRS	Rwy Idg	<b>7414</b>
<b>301°</b>	TDZE	<b>38</b>
	Apt Elev	<b>60</b>

# RNAV (RNP) Y RWY 30

LONG BEACH (DAUGHERTY FLD) (LGB)

RNP AR APCH.		LONG BEACH TOWER* <b>120.5 257.6</b> (Rwy 12) <b>119.4</b> (CTAF) <b>257.6</b> (Rwy 30)		GND CON <b>133.0 257.6</b>	CLNC DEL <b>118.15</b>	UNICOM <b>122.95</b>
<p>▼ For uncompensated Baro-VNAV systems, procedure NA below 4° C or above 54° C.</p> <p>▲</p>		<p>MALSR</p>		<p>MISSED APPROACH: Climb to 800 then climbing left turn to 3000 direct PADDR and hold.</p>		



ELEV 60	D	TDZE 38		
800	3000	PADDR	VGSI and RNAV glidepath not coincident (VGSI Angle 3.00/TCH 73).	
		LUCIG		
<p>GP 3.00° TCH 58</p>				
TDZ/CL Rwy 30	HIRL Rwy 12-30	HIRL Rwy 8R-26L	MIRL Rwy 8L-26R	
REL Rwy 8R, 12, 26L, and 26R				
CATEGORY	A	B	C	D
RNP 0.30 DA	384/30		346 (400-5/8)	
<b>AUTHORIZATION REQUIRED</b>				

SW-3, 07 OCT 2021 to 04 NOV 2021

SW-3, 07 OCT 2021 to 04 NOV 2021