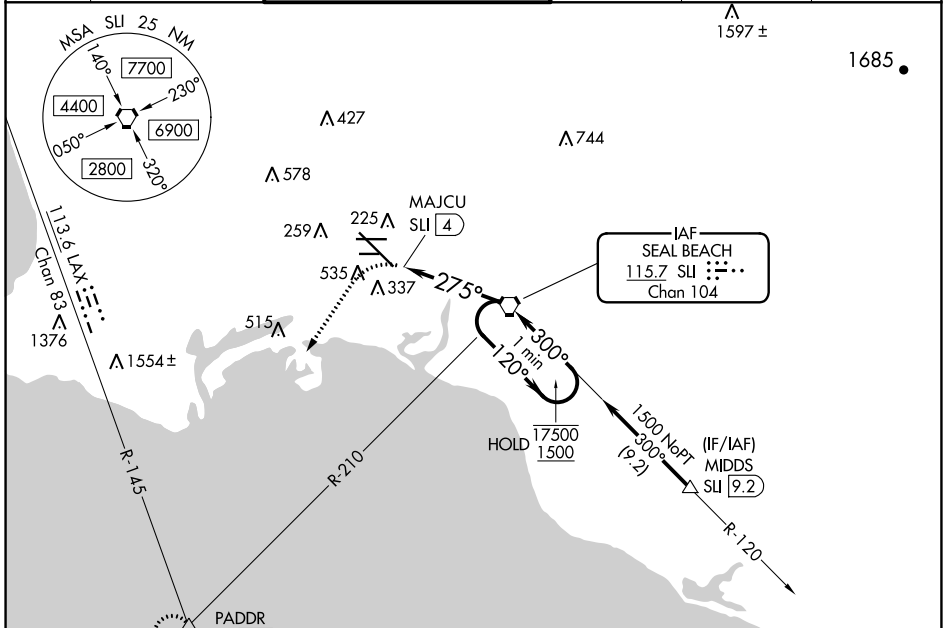


VORTAC SUI 115.7 Chan 104	APP CRS 275°	Rwy Idg TDZE 38 Apt Elev 60	7414
---	------------------------	---	-------------

VOR or TACAN RWY 30

LONG BEACH (DAUGHERTY FLD) (L.G.B)

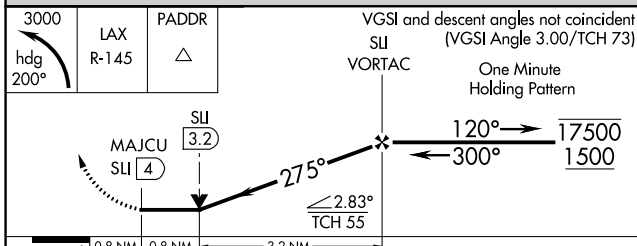
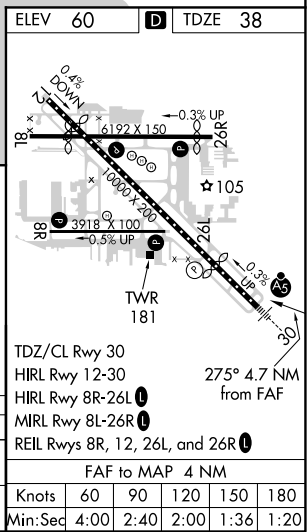
Rwy 30 helicopter visibility reduction below RVR 4000 NA. Inop table does not apply.	MISLSR	MISSED APPROACH: Climbing left turn to 3000 on heading 200° and LAX VORTAC R-145 to PADDR INT/LAX 21.8 DME and hold.			
		ATIS 127.75	SOCAL APP CON 125.35 316.125	LONG BEACH TOWER* 120.5 257.6 (Rwy 12) 119.4 (CTAF) 257.6 (Rwy 30)	GND CON 133.0 257.6



SW-3, 07 OCT 2021 to 04 NOV 2021

SW-3, 07 OCT 2021 to 04 NOV 2021

ELEV 60	D TDZE 38
----------------	-------------------------



CATEGORY	A	B	C	D
S-30	600/55 562 (600-1)	600-1 5/8 562 (600-1 1/8)	840-2 1/4 780 (800-2 1/4)	840-2 1/2 780 (800-2 1/2)
CIRCLING	840-1 780 (800-1)	840-2 1/4 780 (800-2 1/4)	840-2 1/2 780 (800-2 1/2)	

FAF to MAP 4 NM	Knots	60	90	120	150	180
	Min:Sec	4:00	2:40	2:00	1:36	1:20