

ZOOMM THREE DEPARTURE (RNAV)

AL-236 (FAA)

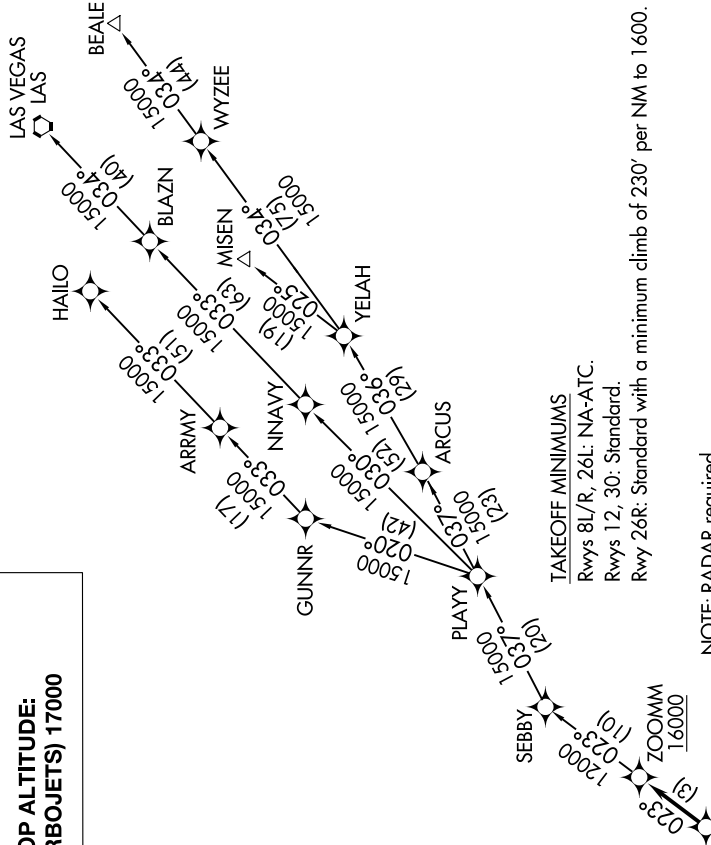
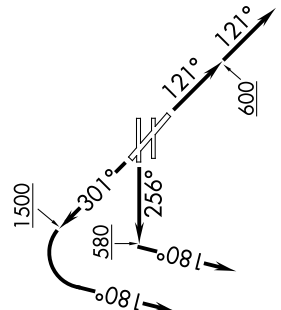
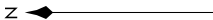
LONG BEACH (DAUGHERTY FLD) (LGB)

LONG BEACH, CALIFORNIA

SW-3, 07 OCT 2021 to 04 NOV 2021

**TOP ALTITUDE:
(TURBOJETS) 17000**

- ATIS 127.75
- CINC DEL 118.15
- GND CON 133.0, 257.6
- SOCAL DEP CON 125.35, 316.125 (Rwy 12)
- 127.2, 269.6 (Rwys 26R, 30)



TAKEOFF MINIMUMS

Rwys 8L/R, 26L: NA-ATC.

Rwys 12, 30: Standard.

Rwy 26R: Standard with a minimum climb of 230' per NM to 1600.

NOTE: RADAR required.

NOTE: RNAV 1

NOTE: DME/DME/IRU or GPS required.

NOTE: Turbojet only.

NOTE: MISEN TRANSITION restricted to aircraft landing LAS terminal area.

NOTE: HAILO/ LAS/ NNAV transitions ATC only.

(NARRATIVE ON FOLLOWING PAGE)

NOTE: Chart not to scale.

ZOOMM THREE DEPARTURE (RNAV)

(ZOOMM3.ZOOMM) 10SEP20

LONG BEACH, CALIFORNIA

LONG BEACH (DAUGHERTY FLD) (LGB)

SW-3, 07 OCT 2021 to 04 NOV 2021