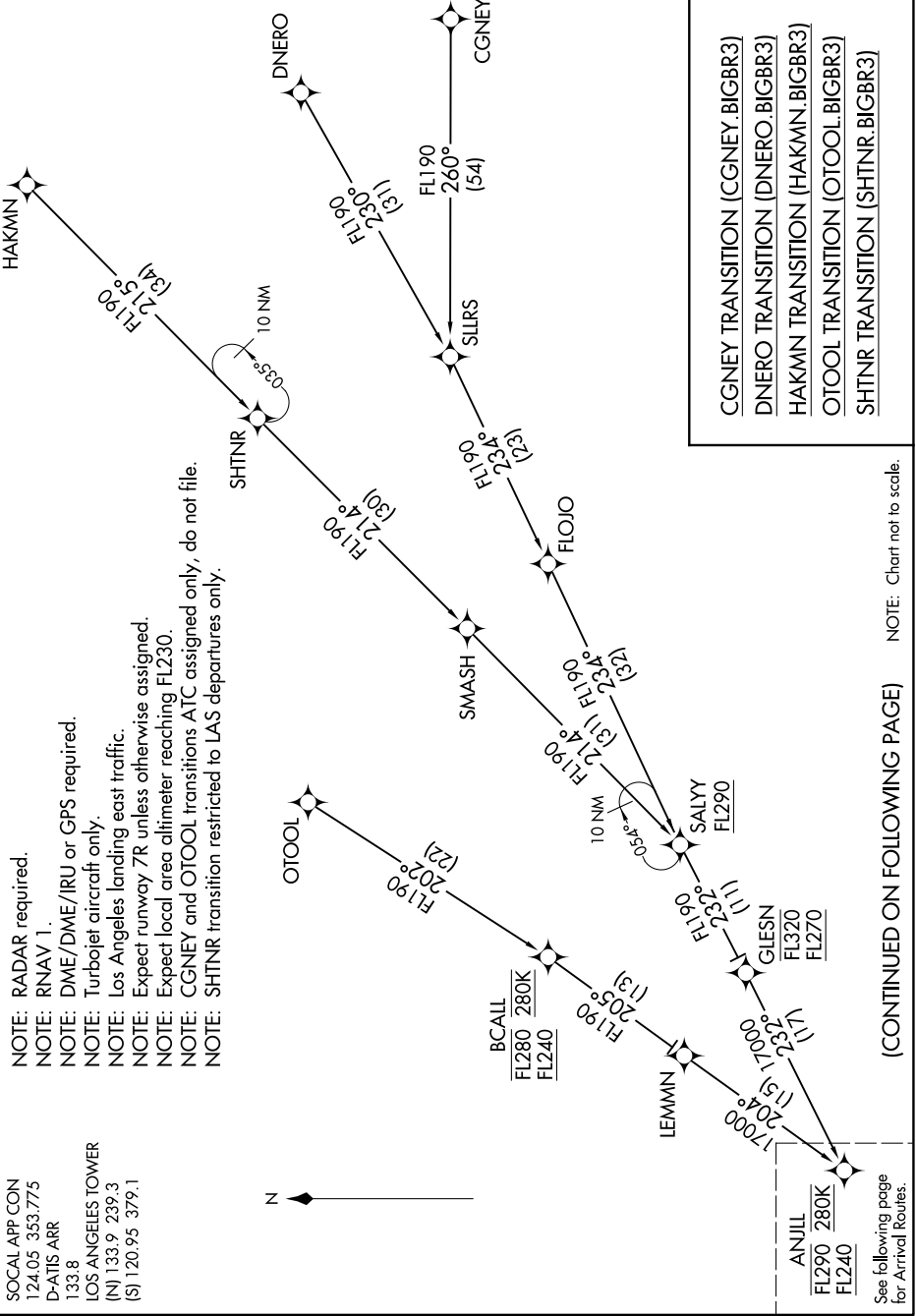


# BIGBR THREE ARRIVAL (RNAV) Transition Routes

SW-3, 07 OCT 2021 to 04 NOV 2021

- NOTE: RADAR required.
- NOTE: RNAV 1.
- NOTE: DME/DME/IRU or GPS required.
- NOTE: Turboprop aircraft only.
- NOTE: Los Angeles landing east traffic.
- NOTE: Expect local area altimeter reaching FL230.
- NOTE: CGNEY and OTOOL transitions ATC assigned only, do not file.
- NOTE: SHTNR transition restricted to LAS departures only.

SOCAL APP CON  
124.05 353.775  
D-ATIS ARR  
133.8  
LOS ANGELES TOWER  
(N) 133.9 239.3  
(S) 120.95 379.1



(CONTINUED ON FOLLOWING PAGE) NOTE: Chart not to scale.

ANJLL  
FL290 280K  
FL240

See following page  
for Arrival Routes.

SW-3, 07 OCT 2021 to 04 NOV 2021

# BIGBR THREE ARRIVAL (RNAV) Transition Routes