

LOC/DME I-OSS <b>108.5</b> Chan <b>22</b>	APP CRS <b>251°</b>	Rwy Idg <b>8926</b> TDZE <b>122</b> Apt Elev <b>128</b>
---	------------------------	---

# ILS RWY 24R (CAT II & III)

LOS ANGELES INTL (LAX)

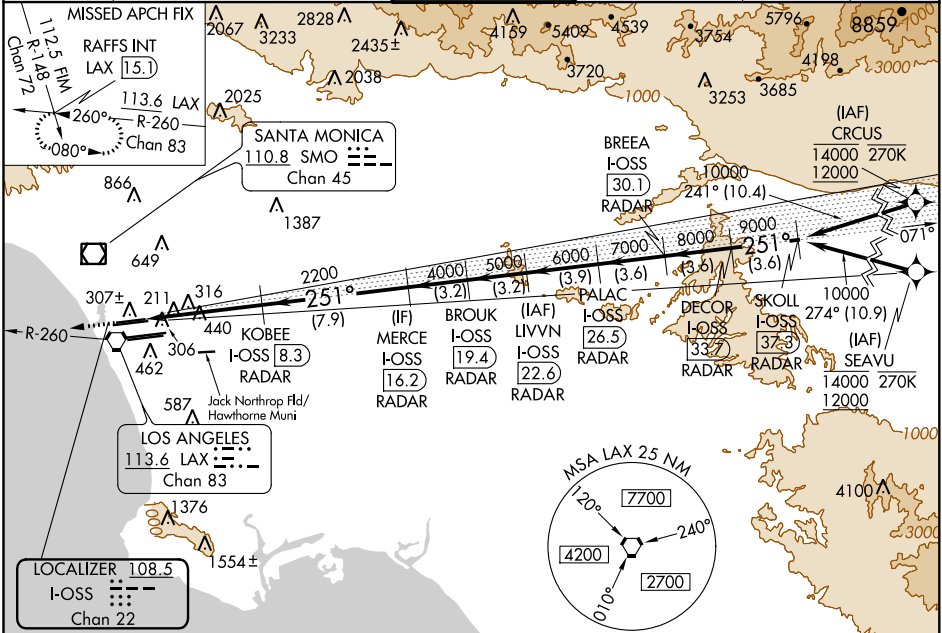
From CRCSU, SEAVU: RNAV 1-GPS required. DME or RADAR required.



MISSED APPROACH: Climb to 2000 on heading 251° and LAX VORTAC R-260 to RAFFS INT/LAX 15.1 DME and hold.

Simultaneous approach authorized with HHR.  
Simultaneous approach authorized.

D-ATIS ARR <b>133.8</b> DEP <b>135.65</b>	SOCAL APP CON <b>124.3 363.2</b> [APCH FM WEST] <b>124.5 235.975</b> [225°-044°]	<b>124.9 269.0</b> [090°-224°] <b>128.5 360.7</b> [045°-089°]	LOS ANGELES TOWER <b>N 133.9 239.3</b> <b>S 120.95 379.1</b>	GND CON <b>N 121.65 327.0</b> <b>S 121.75 327.0</b> <b>W 121.4 327.0</b>	CLNC DEL <b>120.35</b> <b>327.0</b>	CPDLC
---	--	--	--	---	---	-------



SW-3, 07 OCT 2021 to 04 NOV 2021

SW-3, 07 OCT 2021 to 04 NOV 2021

ELEV <b>128</b>	<b>D</b> TDZE <b>122</b>	2000 ↑ hdg 251°	LAX R-260	RAFFS INT	VGSI and ILS glidepath not coincident (VGSI Angle 3.00/TCH 73).	DECOR I-OSS [33.7]	SKOLL I-OSS [37.3]			
						10000	GS 3.00° TCH 55			
		10267	6.4 NM	7.9 NM	3.2 NM	3.2 NM	3.9 NM	3.6 NM	3.6 NM	3.6 NM
CATEGORY	A		B		C		D			
S-ILS 24R	CAT II RA 118/12 100 DA 222									
S-ILS 24R	CAT III RVR 06									

## CATEGORY II & III ILS - SPECIAL AIRCREW & AIRCRAFT CERTIFICATION REQUIRED